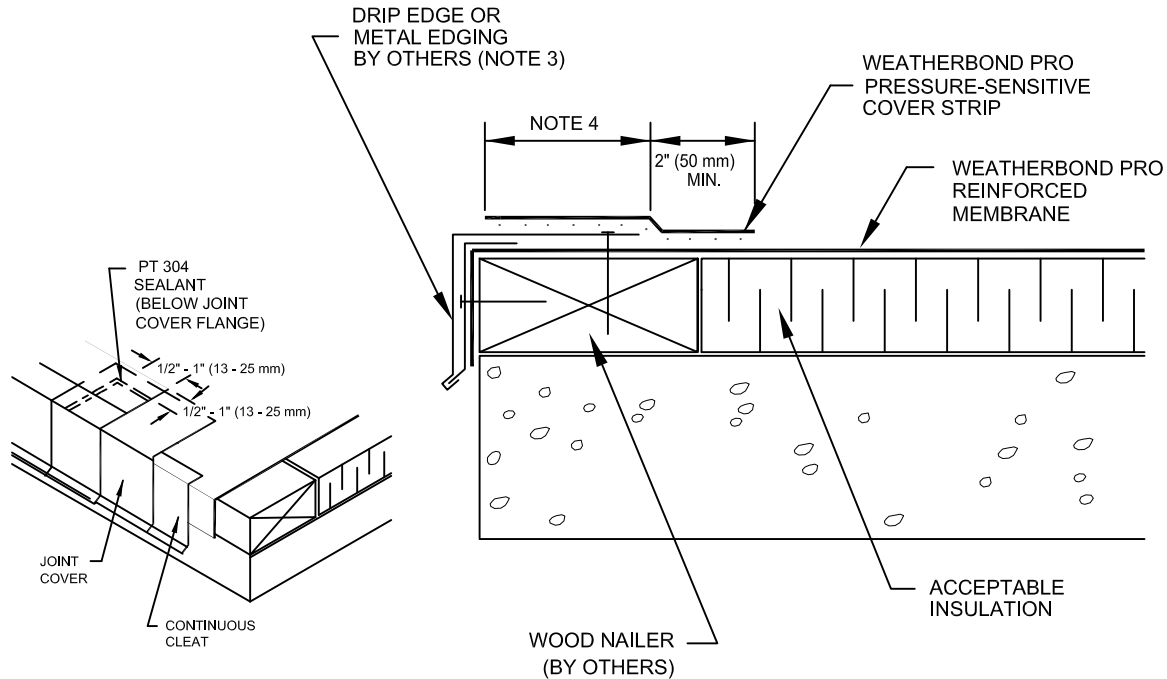


WeatherBond™ Pro ROOFING SYSTEM

HEAT COVER STRIP AT SPLICE INTERSECTIONS PRIOR TO ROLLING TO CONFORM TO STEP-OFFS



DETAIL NOT FOR USE ON 20 YEAR WARRANTY PROJECTS.
ACCEPTABLE EDGING SHALL CONFORM WITH WEATHERBOND PRO DETAIL WBPC-1.2

NOTES:

1. CLEAN THE EXISTING MEMBRANE (AND METAL IF APPLICABLE) WITH WEATHERED MEMBRANE CLEANER. PRIME THE MEMBRANE USING WEATHERBOND MULTIPURPOSE PRIMER. ONCE THE PRIMER IS PROPERLY DRIED, THE PS COVER STRIP IS APPLIED AND ROLLED USING A 2" WIDE ROLLER.
2. WOOD NAILER MUST EXTEND PAST TOTAL WIDTH OF METAL FASCIA DECK FLANGE.
3. FASTENERS AND FASTENER PATTERN AS RECOMMENDED BY METAL EDGE MANUFACTURER.
4. DECK FLANGE MUST BE TOTALLY COVERED BY PS COVER STRIP WITH MINIMUM 2" (50 mm) COVERAGE PAST NAIL HEADS.

WBPC-1.3
METAL EDGE WITH PS COVERSTRIP

WEATHERBOND™
© 2007 WEATHERBOND