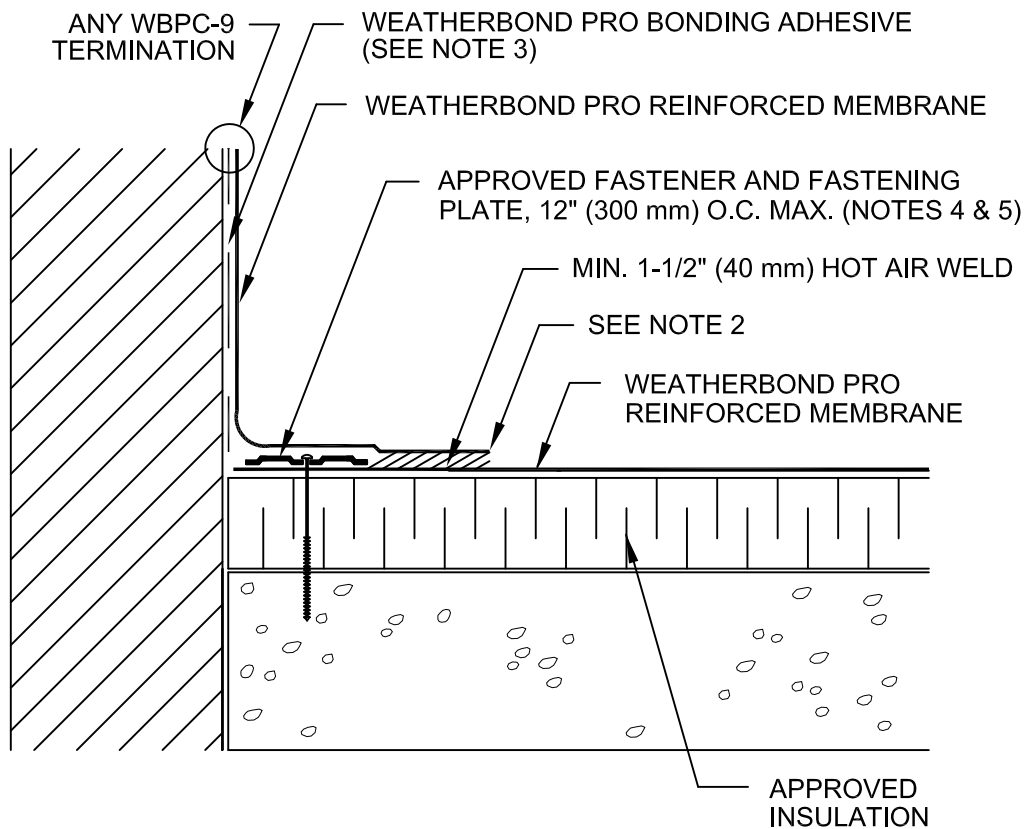


WeatherBond™ Pro ROOFING SYSTEM

CREASE MEMBRANE AT ANGLE CHANGE TO
LIMIT BRIDGING TO 3/4" (19 mm) MAXIMUM



NOTES:

1. POSITION FASTENING PLATES 1/2" (13 mm) TO 1" (25 mm) FROM EDGE OF DECK MEMBRANE.
2. APPROXIMATELY 1/8" (3 mm) DIAMETER BEAD OF CUT-EDGE SEALANT IS REQUIRED ON CUT EDGES OF WEATHERBOND PRO REINFORCED MEMBRANE.
3. WHEN COUNTERFLASHING IS USED FOR TERMINATION, BONDING ADHESIVE IS NOT REQUIRED WHEN FLASHING HEIGHT IS 12" (300 mm) OR LESS. WHEN COPING OR A TERMINATION BAR IS USED, ADHESIVE MAY BE ELIMINATED WHEN FLASHING HEIGHT IS 18" (500 mm) OR LESS.
4. REFER TO "ATTACHMENT I, MEMBRANE FASTENING CRITERIA" FOR PROPER FASTENERS AND PLATES.
5. FASTENING PLATES CAN BE INSTALLED VERTICALLY.

WBPC-12.1
PARAPET FLASHING

WEATHERBOND™
© 2007 WEATHERBOND