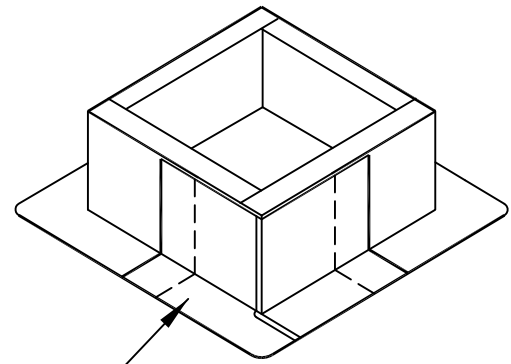
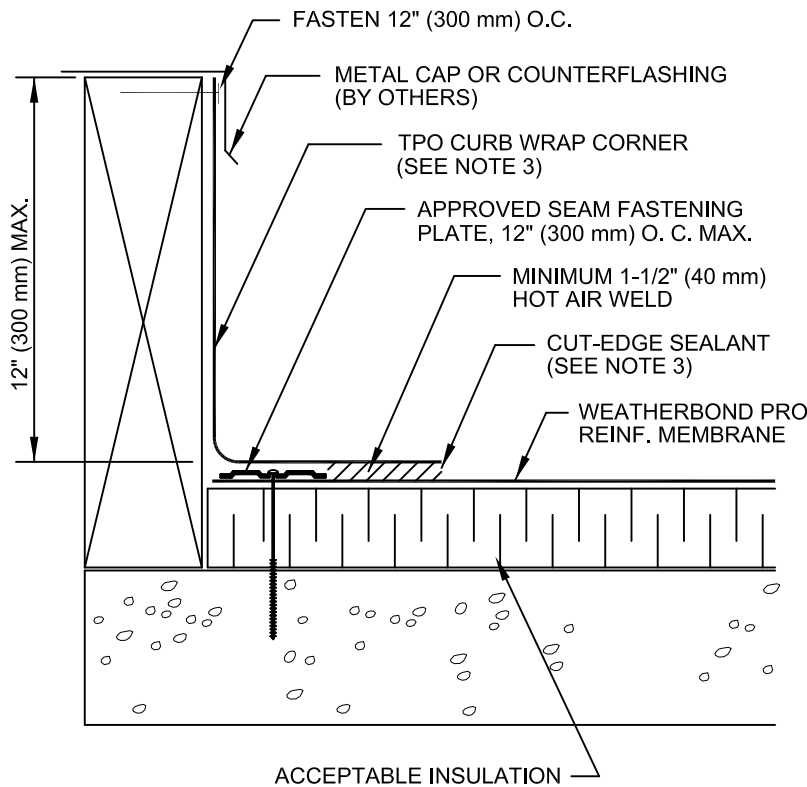


WeatherBond™ Pro ROOFING SYSTEM

CREASE MEMBRANE AT ANGLE CHANGE TO
LIMIT BRIDGING TO 3/4" (19 mm) MAXIMUM



USE ONE TPO CURB WRAP CORNER AT EACH CORNER OF THE CURB. HOT AIR WELD ALL SEAMS IN ACCORDANCE WITH STANDARD SPLICING METHODS. REFER TO NOTE 1.

LIMITED TO 12" (300 mm) MAXIMUM FLASHING HEIGHT
(CUSTOM SIZES AVAILABLE - HEIGHT AND OVERALL LENGTH)

NOTES:

1. FOUR (4) TPO CURB WRAP CORNERS WILL COMPLETELY FLASH A MAXIMUM CURB SIZE OF 6' X 6' (1.8 X 1.8 m). FOR LARGER CURBS USE THE TPO CURB WRAP CORNERS IN CONJUNCTION WITH ADDITIONAL SECTIONS OF WEATHERBOND PRO TPO MEMBRANE.
2. FLASHING MEMBRANE FASTENED APPROXIMATELY 12" ON CENTER. IF FASTENER PENETRATES METAL COUNTERFLASHING, USE NEOPRENE WASHER OR APPLY WATER CUT-OFF MASTIC UNDER COUNTERFLASHING OR CAULK FASTENER HEAD.
3. APPROXIMATELY 1/8" (3 mm) BEAD OF CUT-EDGE SEALANT IS REQUIRED ON THE CUT EDGES OF THE TPO FIELD WRAP CORNER.
4. REFER TO SPECIFICATION FOR APPROVED FASTENERS AND PLATES.

WBPC-5.1
PRE-FABRICATED TPO CURB
CURB WRAP CORNER

WEATHERBOND™
© 2007 WEATHERBOND