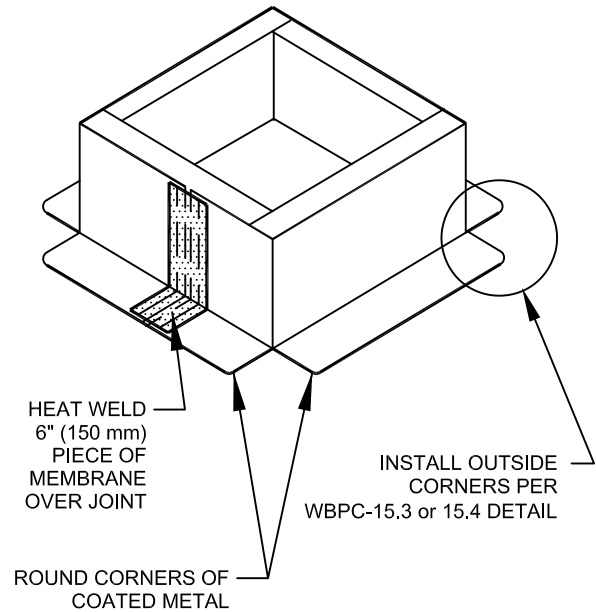
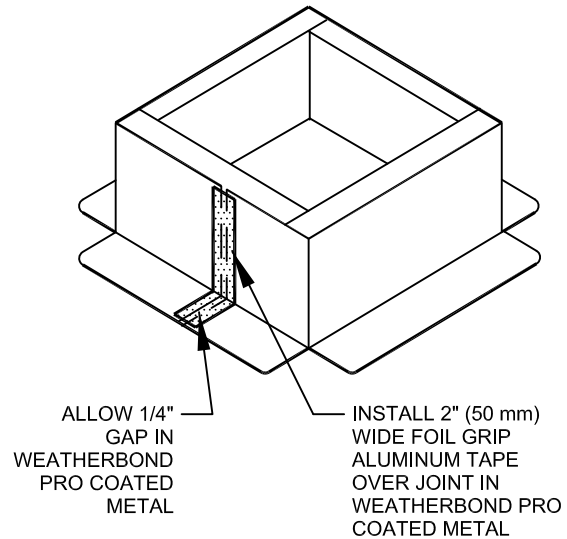
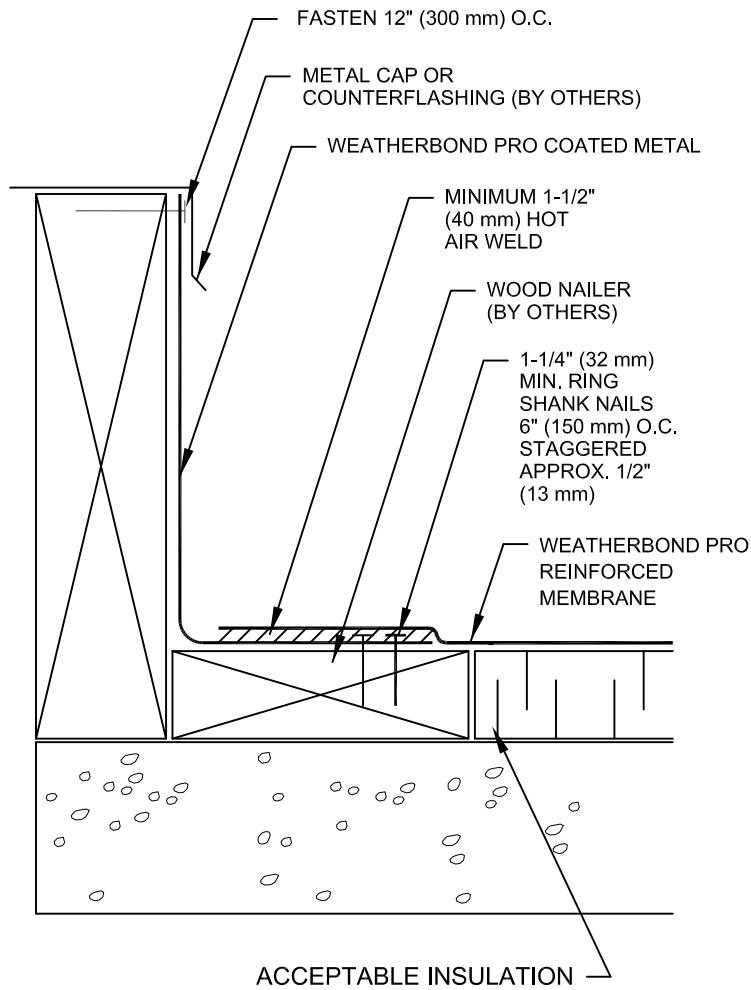


WeatherBond™ Pro ROOFING SYSTEM



NOTE:

1. COATED METAL FLASHING FASTENED APPROXIMATELY 6" (150 mm) ON CENTER. IF FASTENER PENETRATES METAL COUNTERFLASHING, USE NEOPRENE WASHER OR APPLY WATER CUT-OFF MASTIC UNDER COUNTERFLASHING OR CAULK FASTENER HEAD.
2. APPROXIMATELY 1/8" (3 mm) DIAMETER OF CUT-EDGE SEALANT IS REQUIRED ON CUT EDGES OF WEATHERBOND PRO REINFORCED MEMBRANE.

**WBPC-5.2
COATED METAL CURB FLASHING**

WEATHERBOND™
© 2007 WEATHERBOND