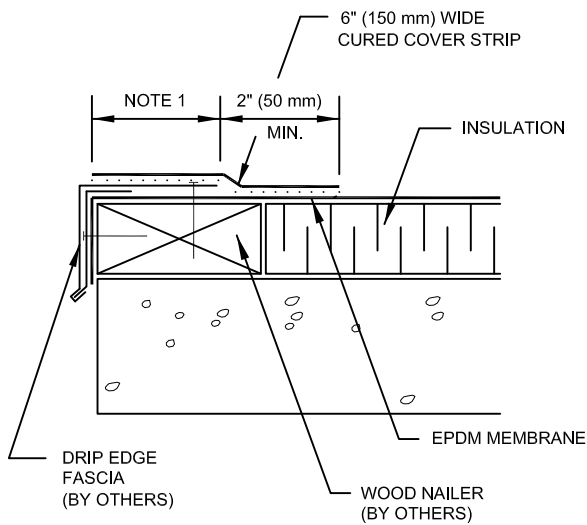


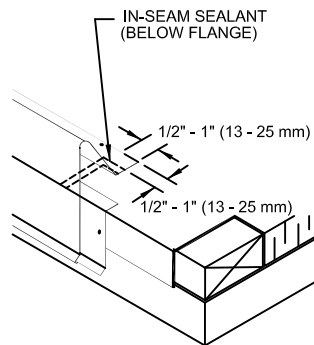
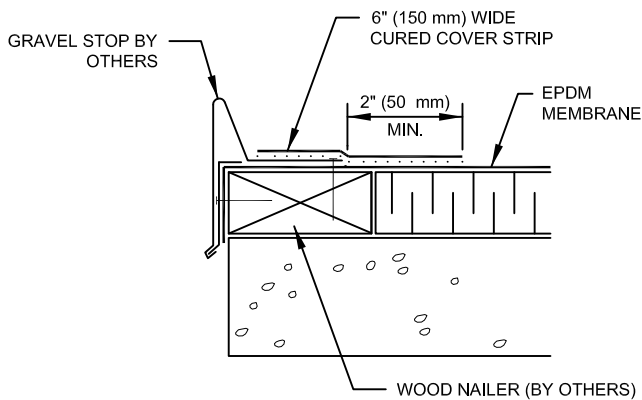
WBRC-1.2 (OPTION #1)



NOTES:

1. DECK FLANGE MUST BE TOTALLY COVERED BY FLASHING WITH MINIMUM 2" (50 mm) COVERAGE PAST NAIL HEADS.
2. TO REMOVE FINISHING OILS, SCRUB METAL FLANGE WITH WEATHERED MEMBRANE CLEANER; ALLOW TO DRY PRIOR TO APPLYING PRIMER.
3. APPLY PRIMER TO METAL FLANGE AND EPDM MEMBRANE SURFACE PRIOR TO INSTALLING FLASHING.
4. LAP SEALANT MUST BE APPLIED AT FLASHING OVERLAPS AND INTERSECTIONS WITH JOINTS IN METAL EDGING.
5. CONSULT RESPECTIVE MANUFACTURER FOR FASTENING REQUIREMENTS AND APPROPRIATE SEALANT

WBRC-1.2 (OPTION #2)



WBRC-1.2 (OPTION 1 AND 2)
METAL EDGE
TERMINATION/COVER STRIP