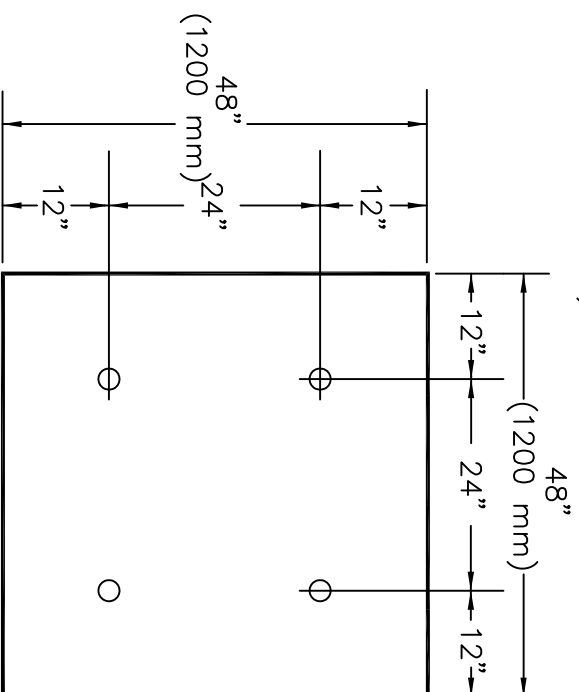
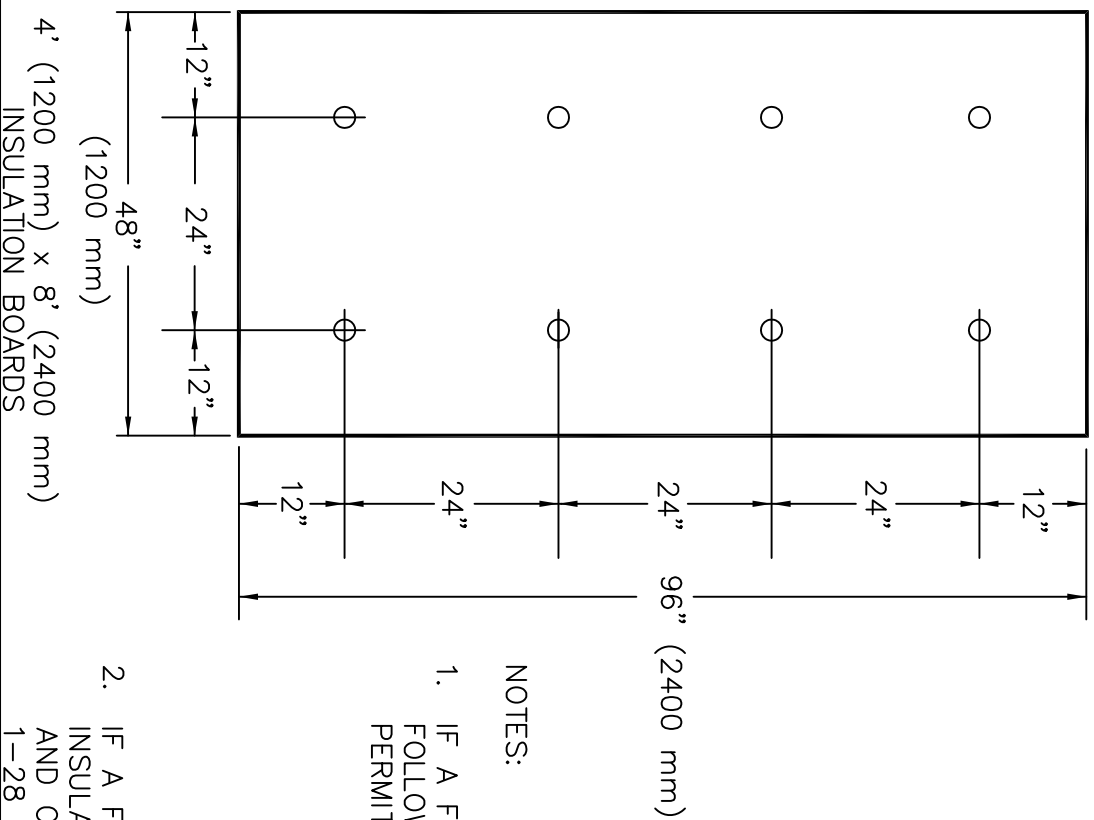


MINIMUM 2" (50 mm) THICK POLYISO INSULATION (BY OTHERS) (SINGLE OR TOP LAYER)
 WEATHERBOND FASTENERS AND INSULATION PLATES MUST BE USED



NOTES:

1. IF A FACTORY MUTUAL (FM) RATING IS NOT REQUIRED, THE FOLLOWING TOLERANCES ON DIMENSIONS BETWEEN FASTENERS ARE PERMITTED:

DIMENSIONS SHOWN ON DRAWING	PERMITTED TOLERANCES
12" (300 mm)	± 1" (25 mm)
24" (600 mm)	± 2" (50 mm)

2. IF A FACTORY MUTUAL (FM) RATING IS REQUIRED, ADDITIONAL INSULATION FASTENERS WILL BE REQUIRED AT THE ROOF PERIMETER AND CORNERS. REFER TO FM LOSS PREVENTION DATA SHEETS 1-28 AND 1-29 OR CONTACT WEATHERBOND.

WFA-27.3

2" MIN. POLYISO INSULATION (BY OTHERS)

WEATHERBOND

©2009 WEATHERBOND