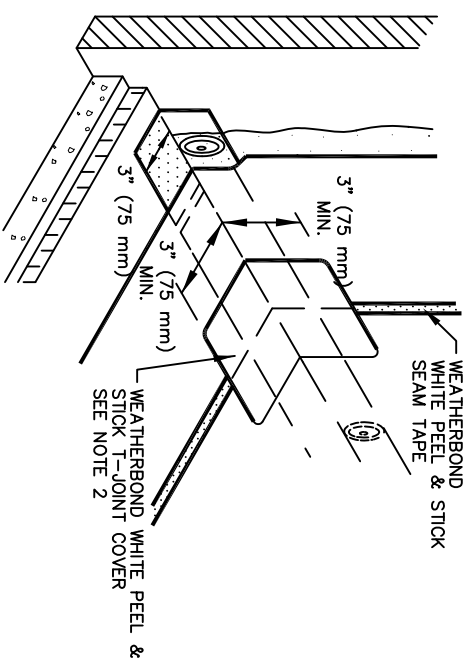
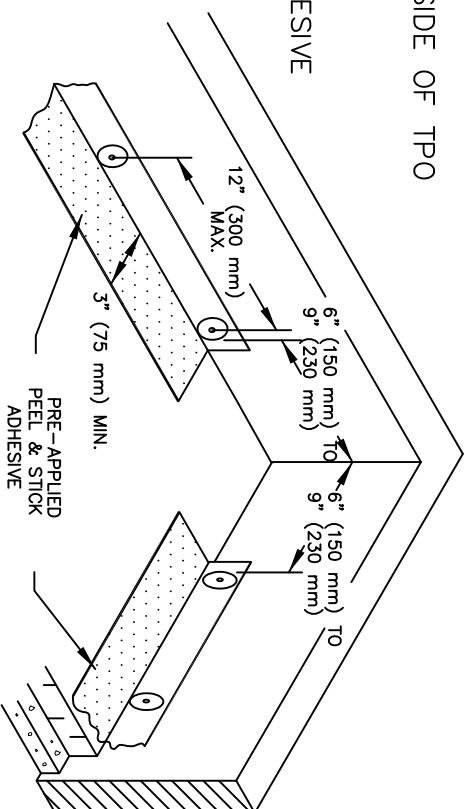
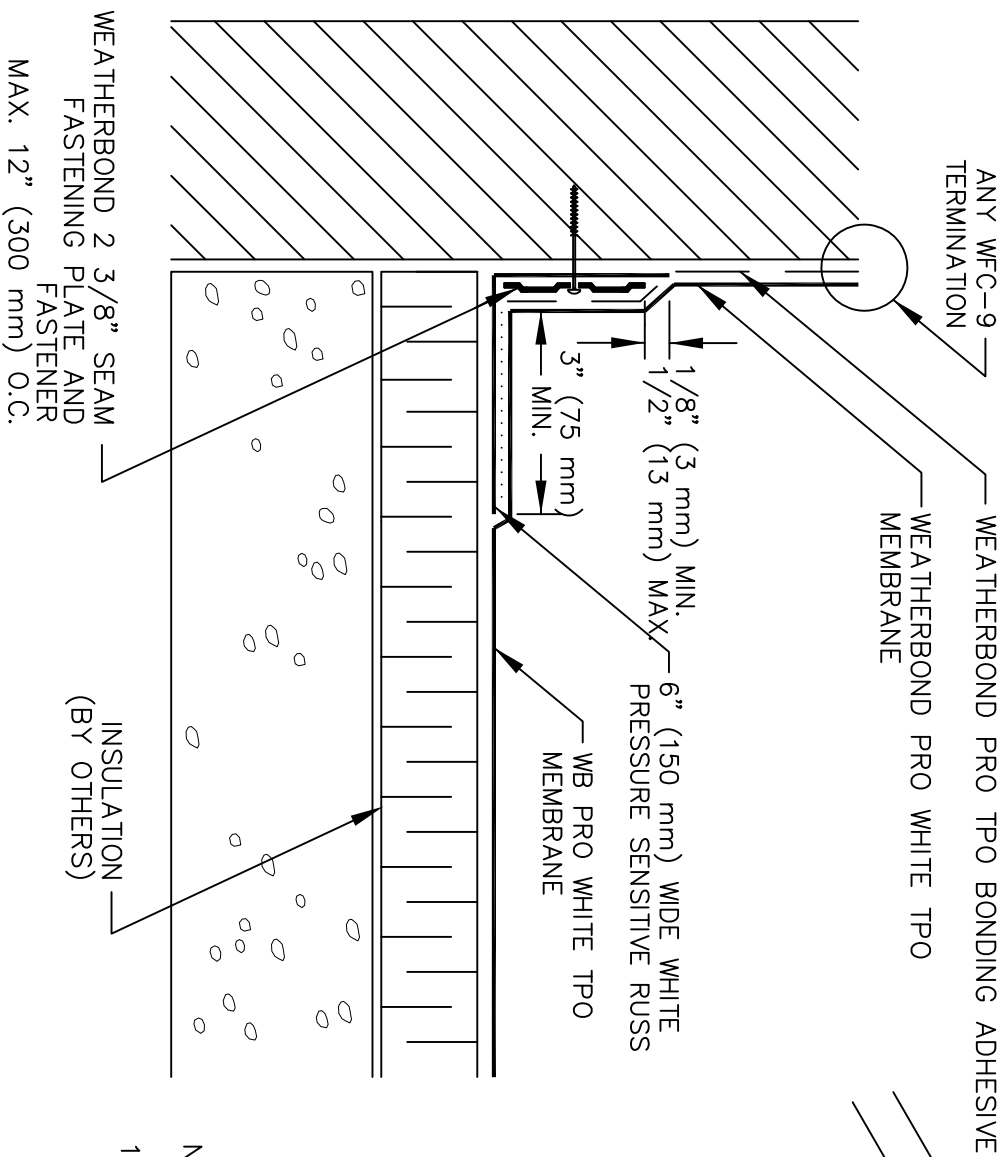


WEATHERBOND TPO PRIMER MUST BE APPLIED TO BACK SIDE OF TPO
 PRIOR TO ADHERING MEMBRANE TO PS RUSS



NOTES:

1. 6" (150 mm) WIDE PEEL & STICK UNCURED EPDM FLASHING MAY ALSO BE CENTERED OVER FIELD SPLICE AT ANGLE CHANGE.

WFC 12.4

WALL FLASHING WITH PRESSURE SENSITIVE RUSS

WEATHERBOND™

©2009 WEATHERBOND