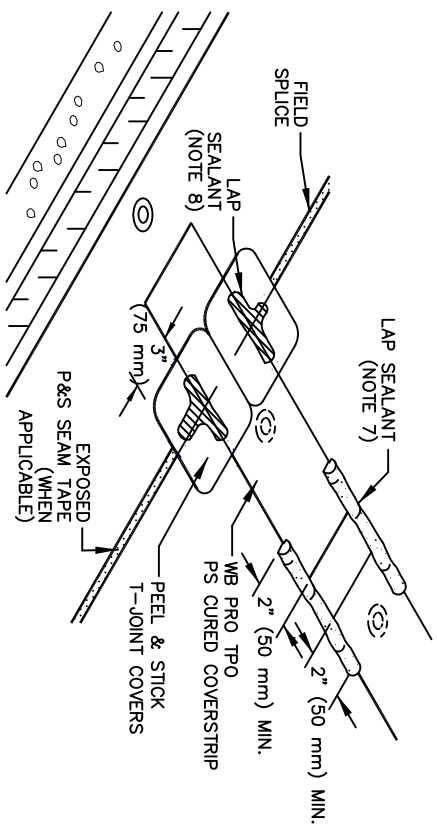
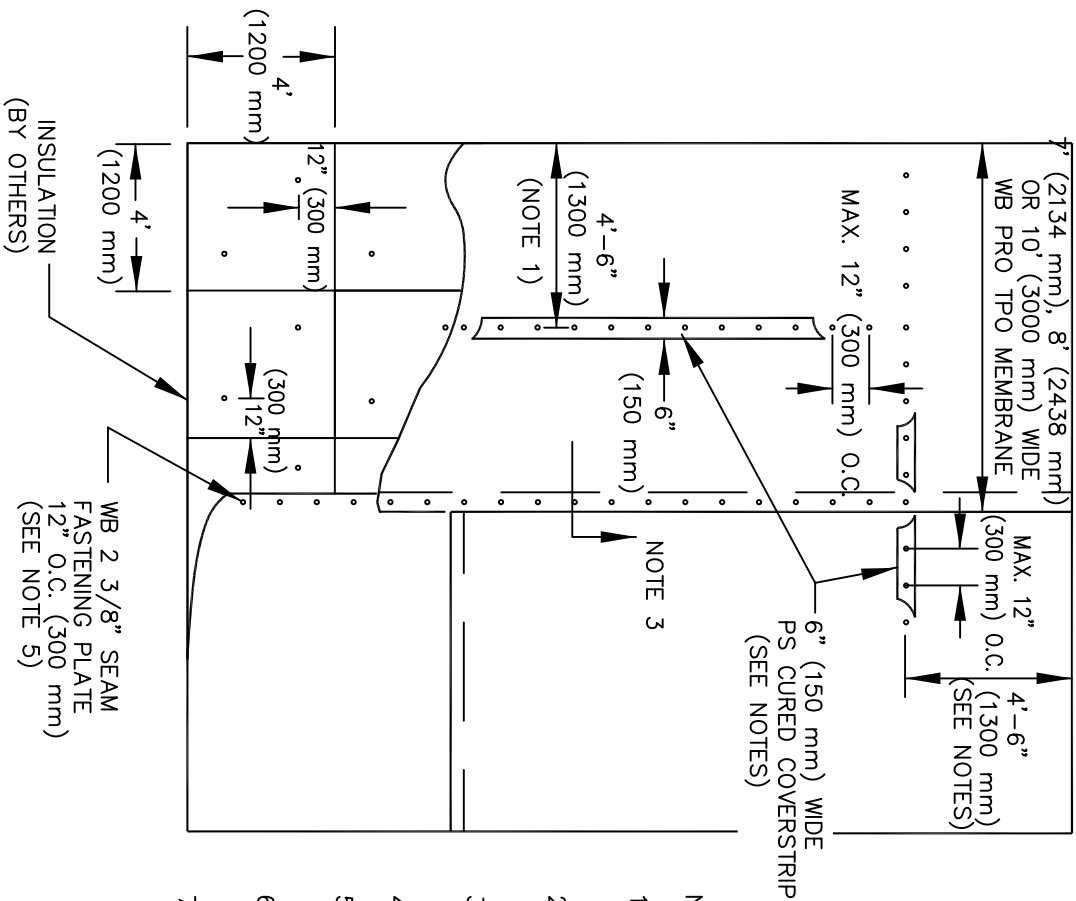


REFER TO SPECIFICATION FOR REQUIRED NUMBER OF PERIMETER SHEETS, WIDTH OF FIELD SHEETS AND FASTENING DENSITY.



NOTES:

1. MECHANICALLY ATTACHED PERIMETER SHEET SHALL BE 3'-6" (1000 mm) TO 4'-6" (1300 mm).
2. END ROLL SECTIONS OF MEMBRANE DO NOT REQUIRE MECHANICAL FASTENING AND SHALL BE OVERLAPPED 3" (75 mm) MINIMUM.
3. FOR MEMBRANE SPLICE AT SEAM FASTENING PLATES, REFER TO APPLICABLE WEMA-2 DETAIL.
4. INSULATION SHALL BE MECHANICALLY ATTACHED; REFER TO SPECIFICATIONS.
5. WB TPO PRIMER MUST BE APPLIED TO MEMBRANE SURFACE PRIOR TO APPLYING PRESSURE SENSITIVE CURED COVER STRIP.
6. LAP SEALANT MUST BE APPLIED ALONG PRESSURE SENSITIVE CURED COVER STRIP AT FLASHING OVERLAPS AS SHOWN ABOVE.
7. APPLY LAP SEALANT ALONG THE LEADING EDGE OF THE MEMBRANE SPLICE (UNDER THE 6" X 6" T-JOINT COVER) COVERING THE EXPOSED SPLICE TAPE 2" (50 mm) IN ALL DIRECTIONS FROM THE SPLICE INTERSECTION.

WEMA-21.4 ALTERNATE MEMBRANE ATTACHMENT WITH
PS CURED COVER STRIP

WEATHERBOND™

©2009 WEATHERBOND