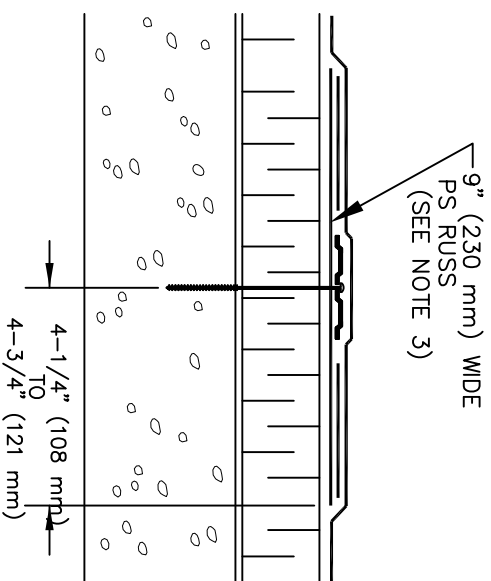
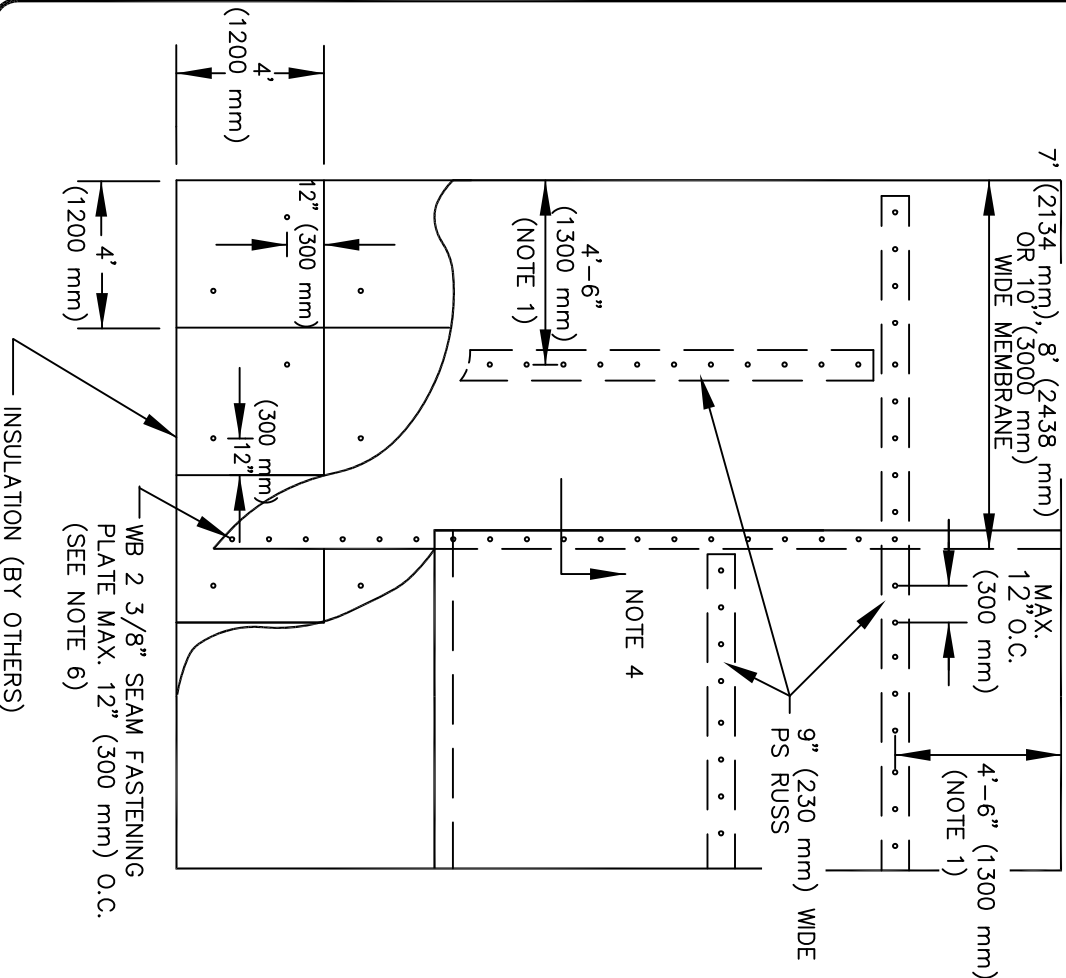


REFER TO SPECIFICATION FOR REQUIRED NUMBER OF PERIMETER SHEETS, WIDTH OF FIELD SHEETS AND FASTENING DENSITY.



- NOTES:
1. MECHANICALLY ATTACHED PERIMETER SHEET SHALL BE 3'-6" (1000 mm) TO 4'-6" (1300 mm).
 2. END ROLL SECTIONS OF MEMBRANE DO NOT REQUIRE MECHANICAL FASTENING AND SHALL BE OVERLAPPED 3" (75 mm) MINIMUM.
 3. WEATHERBOND TPO PRIMER MUST BE APPLIED TO BACK SIDE OF EPDM PRIOR TO ADHERING MEMBRANE TO PS RUSS.
 4. FOR MEMBRANE SPLICE AT SEAM FASTENING PLATES, REFER TO APPLICABLE WFMA-2 DETAIL.
 5. INSULATION SHALL BE MECHANICALLY ATTACHED; FOR TYPE AND FASTENING PATTERN SEE SPECIFICATION.

WFMA-21.5
MEMBRANE ATTACHMENT WITH PS RUSS



©2009 WEATHERBOND