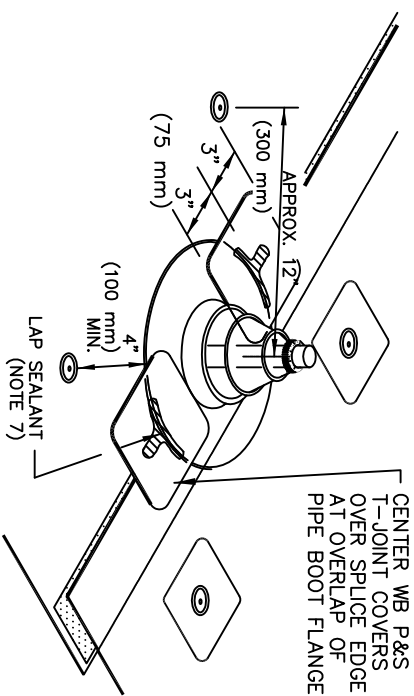
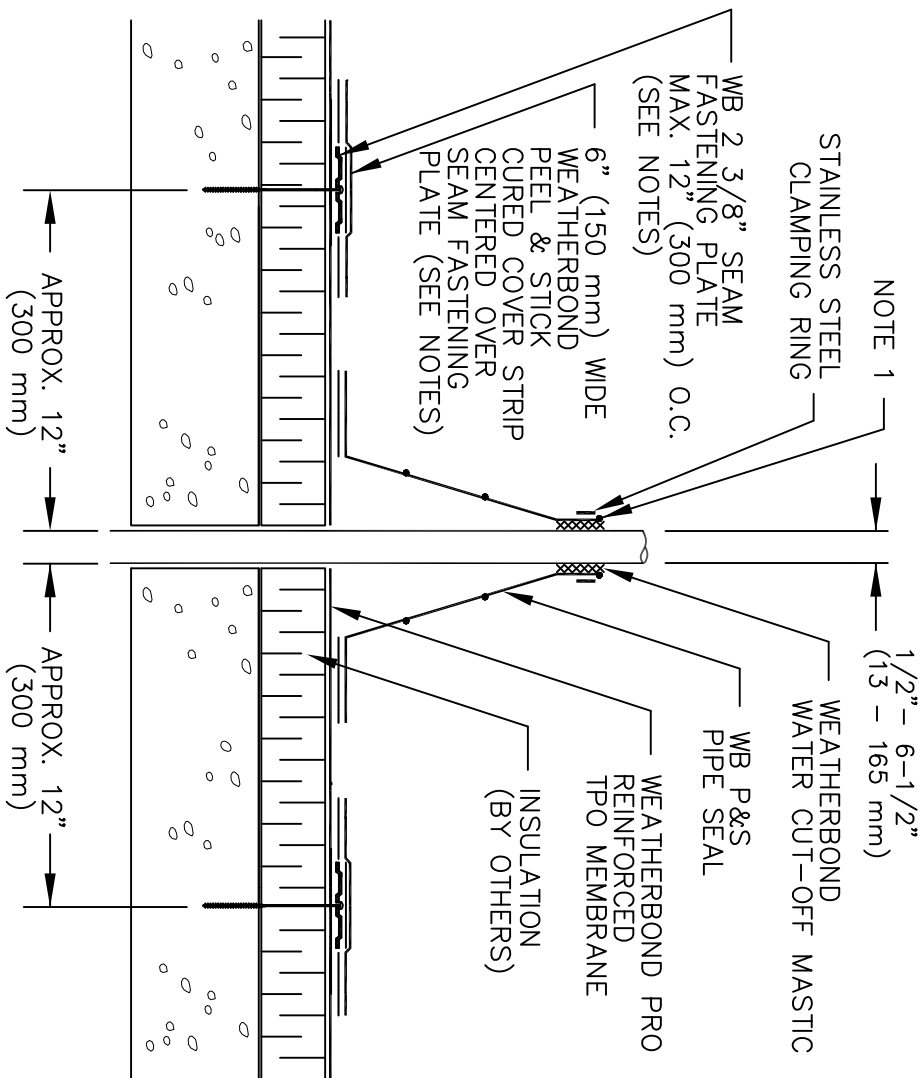


FOR PIPES BETWEEN 1/2" TO 6-1/2" DIAMETER



- NOTES:
1. PRE-MOLDED PIPE FLASHING MUST HAVE INTACT RIB AT THE TOP EDGE REGARDLESS OF PIPE DIAMETER.
 2. SEE SPECIFICATION FOR OTHER DETAILS REQUIRING SEAM FASTENING PLATES.
 3. INSTALL A MINIMUM OF 4 SEAM FASTENING PLATES FOR PIPES WITH A DIAMETER UP TO 6" (150 mm). ADDITIONAL SEAM FASTENING PLATES WILL BE REQUIRED FOR PIPES GREATER THAN 6" (150 mm) IN DIAMETER AND SHALL BE SPACED 12" (300 mm) ON CENTER MAXIMUM.
 4. FLASHING OVER SEAM FASTENING PLATES AND PIPE SEAL DECK FLANGE CANNOT BE OVERLAPPED.
 5. WB TPO PRIMER MUST BE APPLIED TO MEMBRANE SURFACE PRIOR TO APPLYING QUICK APPLIED COVER STRIP (OVER FASTENING PLATES) AND PEEL & STICK PIPE FLASHING.
 6. APPLY LAP SEALANT ALONG THE LEADING EDGE OF THE MEMBRANE SPLICE AND THE PIPE SEAL EDGE (UNDER THE 6" X 6" T-JOINT COVER) COVERING THE EXPOSED SPLICE TAPE 2" (50 mm) IN ALL DIRECTIONS FROM THE SPLICE INTERSECTION.

WFMA-8.2

PEEL & STICK PIPE FLASHING

WEATHERBOND

©2009 WEATHERBOND