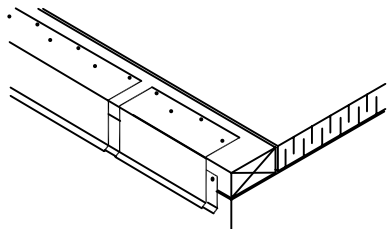
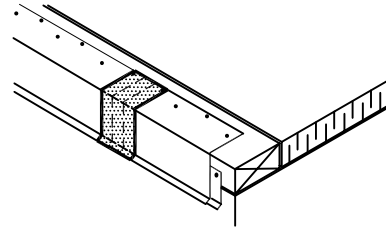


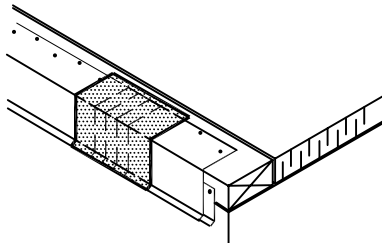
WeatherBond™ Pro ROOFING SYSTEM



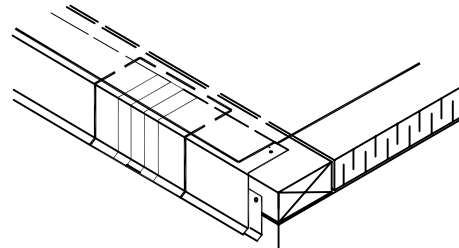
1. INSTALL WEATHERBOND PRO COATED METAL WITH 1/8" - 1/4" (3 - 6 mm) JOINTS BETWEEN ADJOINING SECTIONS.



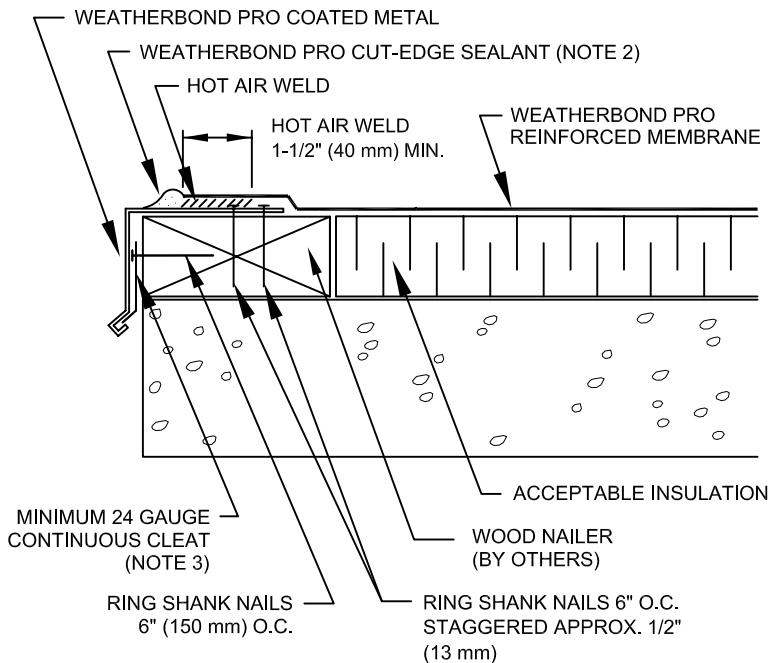
2. INSTALL 2" (50 mm) WIDE FOIL GRIP ALUMINUM TAPE OVER JOINTS IN WEATHERBOND PRO COATED METAL.



3. HEAT WELD 6" (150 mm) WIDE PIECE OF WEATHERBOND PRO NON-REINFORCED MEMBRANE OVER JOINT.



4. POSITION WEATHERBOND PRO REINFORCED MEMBRANE AND HEAT WELD TO WEATHERBOND PRO COATED METAL A MINIMUM OF 1-1/2" (40 mm) AS SHOWN BELOW.



NOTES:

1. FASTENERS USED TO ATTACH WEATHERBOND PRO COATED METAL MUST PENETRATE WOOD NAILERS A MINIMUM OF 1-1/4" (32 mm). IF 1/2" (13 mm) PLYWOOD IS USED AS THE TOP NAILER, FASTENERS MUST PENETRATE A MINIMUM OF 1-1/4" INTO NAILER BELOW.
2. APPROXIMATELY 1/8" (3 mm) DIAMETER BEAD OF CUT-EDGE SEALANT IS REQUIRED ON CUT EDGES OF WEATHERBOND PRO REINFORCED MEMBRANE.
3. GAUGE OF CONTINUOUS CLEAT IS DEPENDENT ON THE FASCIA HEIGHT AS SHOWN ON THE CHART BELOW.

MAX. FASCIA LENGTH	GAUGE OF CONT. CLEAT
4" (100 mm)	24 GAUGE (.59 mm)
6" (150 mm)	22 GAUGE (.75 mm)
8" (200 mm)	20 GAUGE (.91 mm)

WBPC-1.2
COATED METAL DRIP EDGE

WEATHERBOND™
© 2007 WEATHERBOND