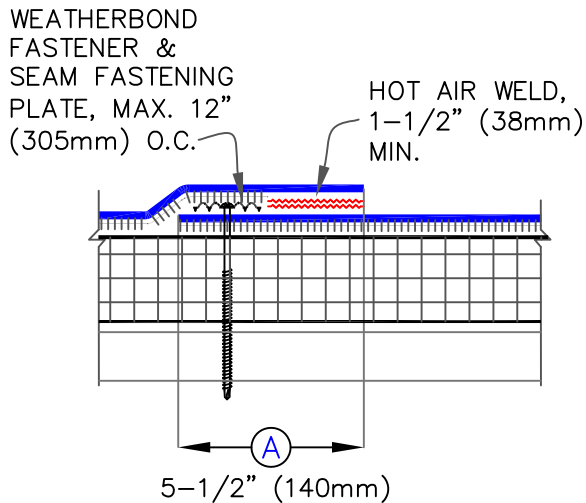
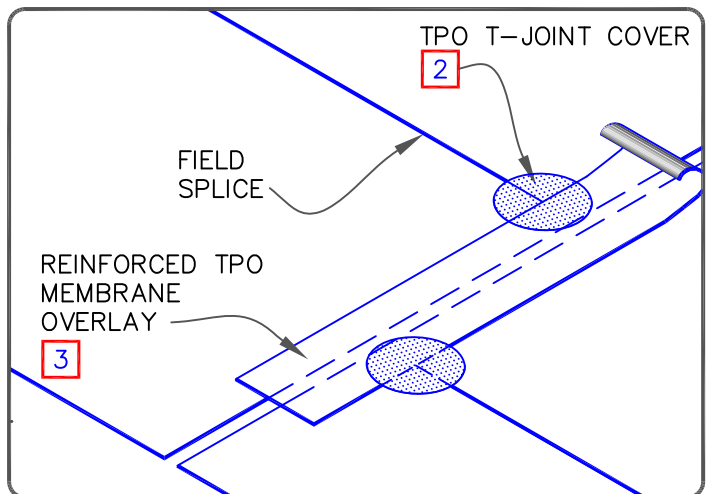
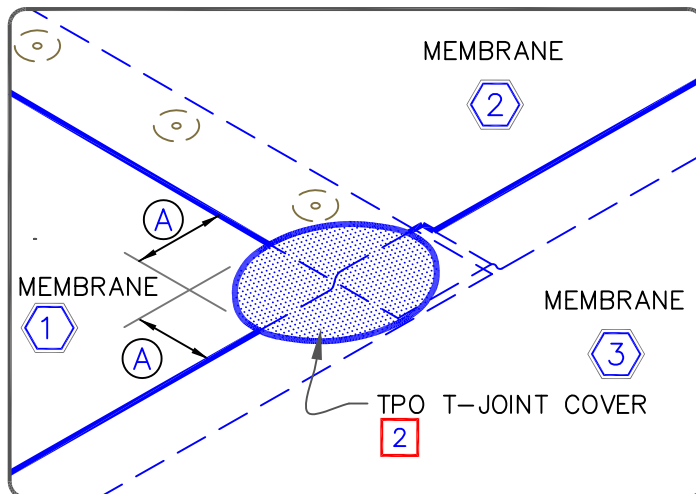
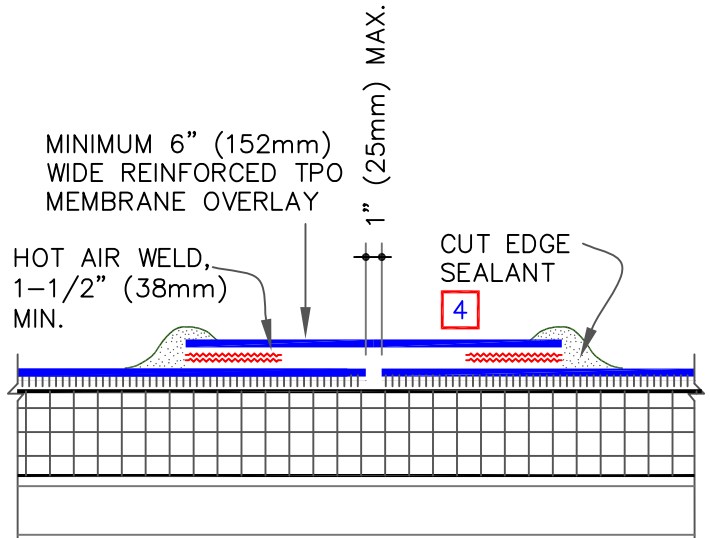


MEMBRANE SPLICE



END LAP SPLICE

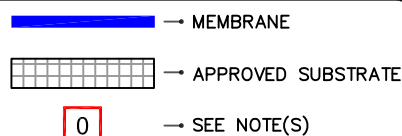


NOTES:

1. REFER TO WEATHERBOND SPECIFICATIONS FOR ACCEPTABLE WEATHERBOND FASTENER/PLATE AND FASTENING DENSITY.
2. WHEN USING 135 OR 155-MIL AFX TPO MEMBRANE, APPLY A 4-1/2" DIAMETER TPO "T-JOINT" COVER AT ALL FIELD SPLICE INTERSECTIONS.
3. WHEN USING 60 OR 80 MIL TPO REINFORCED MEMBRANE OVERLAY, INTERSECTIONS BETWEEN SPLICES MUST BE OVERLAID WITH A 4-1/2" (114mm) DIAMETER TPO "T-JOINT" COVER, AS SHOWN.
4. APPROXIMATELY 1/8" (3 mm) DIAMETER BEAD OF CUT-EDGE SEALANT IS REQUIRED ON CUT EDGES OF REINFORCED TPO MEMBRANE.



AFX TPO MECHANICALLY FASTENED MEMBRANE & END LAP SPLICES



SPEC. SUPPLEMENT

AFX-MF2