

ROOF PARAPET WALL
OR LOW CURB

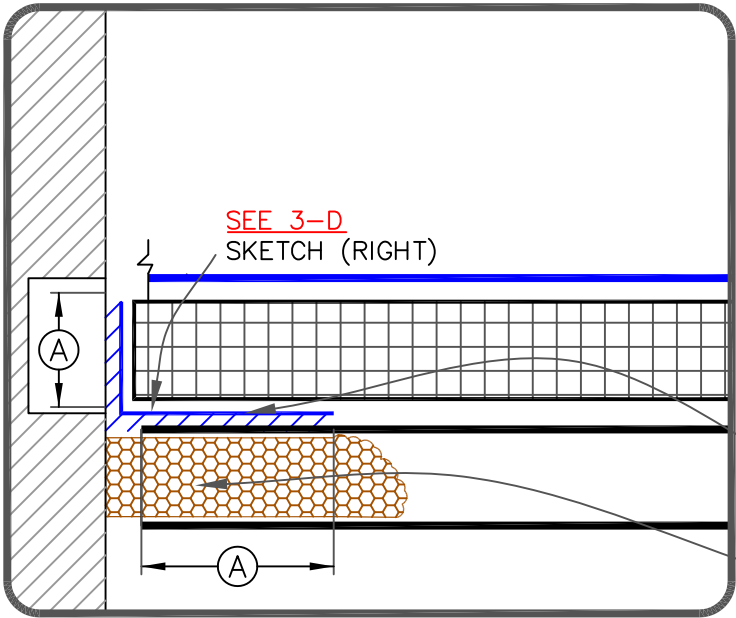
ROOF ASSEMBLY

INSTALL PEEL & STICK FLASHING OR
725TR AIR & VAPOR BARRIER ON
TOP FLUTES OF METAL DECK &
WALL

HIGH DENSITY CLOSED-CELL
POLYURETHANE FOAM OR FILLER
INSULATION PIECES TO SUPPORT THE
STRIPPING

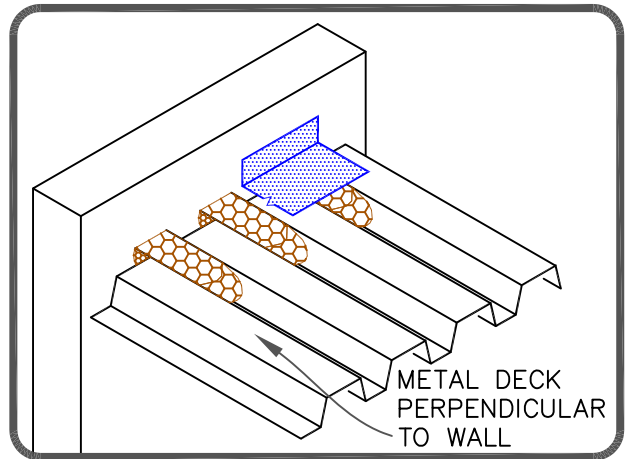
① STEEL DECK WITH FLUTES PARALLEL TO WALL

DIMENSIONS	mm	
(A)	3"	76 MIN.



SEE 3-D
SKETCH (RIGHT)

② STEEL DECK WITH FLUTES PERPENDICULAR TO WALL



INSTALL PEEL & STICK FLASHING OR
725TR AIR & VAPOR BARRIER ON
TOP FLUTES OF METAL DECK &
WALL

HIGH DENSITY CLOSED-CELL
POLYURETHANE FOAM OR FILLER
INSULATION PIECES TO SUPPORT THE
STRIPPING



DECK-TO-WALL AIR INFILTRATION RESISTANCE BARRIER

- MEMBRANE
- APPROVED SUBSTRATE
- SEE NOTE(S)

SPEC. SUPPLEMENT

G-01