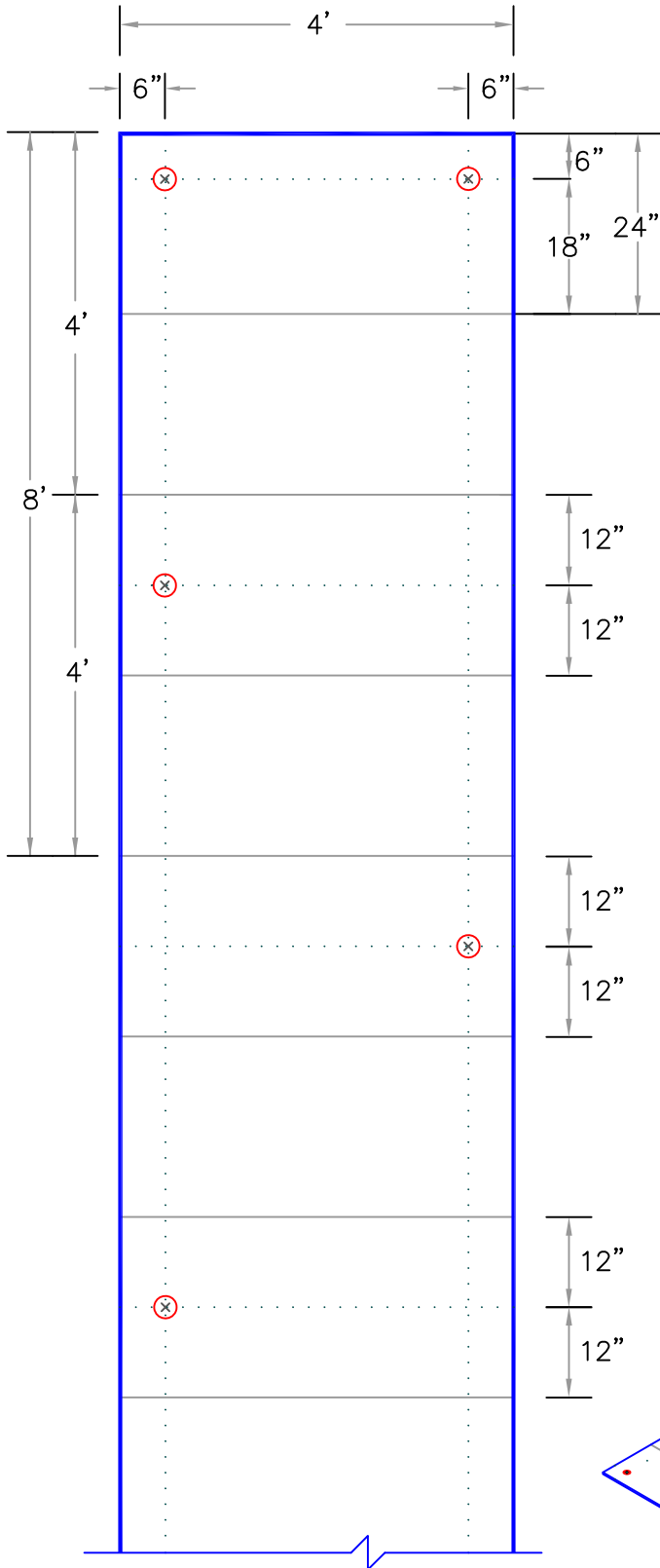
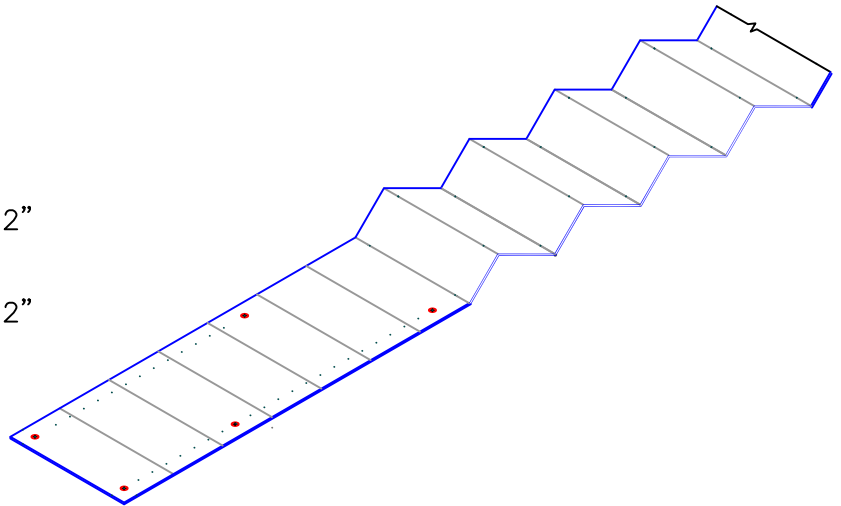


ATTACHMENT DETAIL



NOTES:

1. INSTALL R-TECH RECOVER BOARD WITH CONTINUOUS SIDE JOINTS AND END JOINTS STAGGERED SO THEY ARE OFFSET BY A MINIMUM OF 12" (305mm) FROM THE END JOINTS IN ADJACENT ROWS.
2. INSULATION SHOULD ABUT TIGHTLY AGAINST ADJACENT BOARDS.
3. IF R-TECH FANFOLD RECOVER BOARD IS BEING INSTALLED OVER AN EXISTING LAYER OF INSULATION, ALL JOINTS MUST BE OFFSET A MINIMUM OF 6" (152mm) BETWEEN LAYERS.
4. FASTENERS SHOULD NEVER BE CLOSER THAN 6" (152mm) FROM THE EDGES OF THE BOARD.
5. CARE MUST BE TAKEN TO AVOID OVERDRIVING OR UNDER-DRIVING THE FASTENER AND PLATE ASSEMBLY.
6. METALLIC FACER PERMITS THE USE OF R-TECH RECOVER BOARD UNDER EPDM MECHANICALLY FASTENED ASSEMBLIES IN NORTHERN CLIMATES (CONTACT CARLISLE FOR ACCEPTANCE).



FEET TO MILLIMETERS

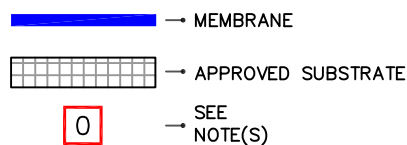
4'	8'
1219	2438

INCHES TO MILLIMETERS

inch	1/8"	1/4"	15/32"	1/2"	5/8"	3/4"	1"	1.5"	2"	2.5"	3"	4"	6"	8"	9"	11"	12"	18"	24"	36"
mm	3	6	12	13	16	19	25	38	51	63	76	102	152	203	229	279	305	457	610	914



R-Tech FANFOLD ROOF UNDERLAYMENT



SPEC. SUPPLEMENT

MF-27.3