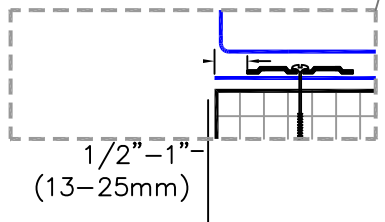
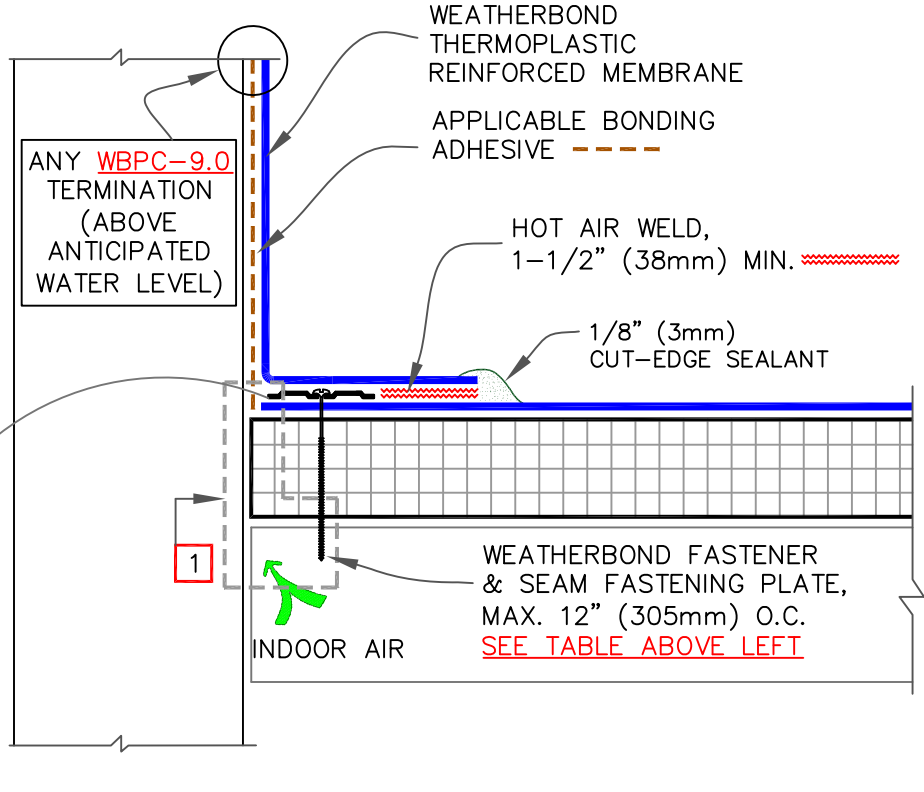
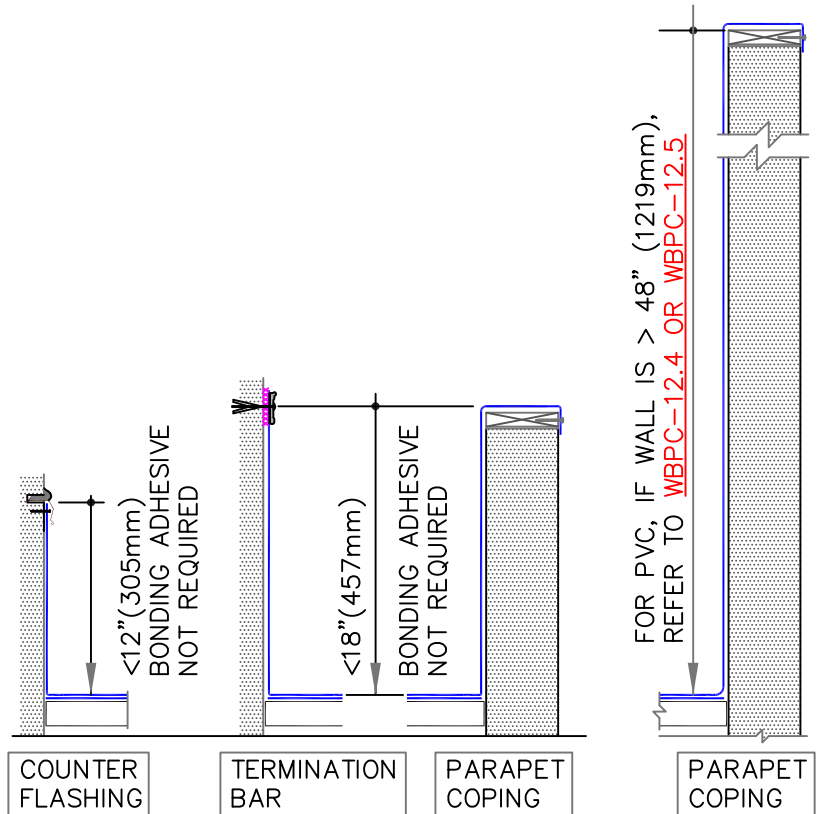


TABLE: FASTENER TYPES ON MECHANICALLY FASTENED ROOF ASSEMBLY		
DECK TYPE	FASTENERS	PLATES
STEEL, WOOD	HPWX	
CONCRETE	APPROVED CONCRETE FASTENER	HPWX



NOTES:

1. REFER TO SPECIAL CONDITION [SPEC. SUPPLEMENTS G-01-11 OR G-08-11](#):
 - 1.1. TO BLOCK INDOOR AIR INFILTRATION AND HUMIDITY AT THE JUNCTION ([G-01-11](#)).
 - 1.2. WHERE ROOF SYSTEM IS DESIGNED WITH A VAPOR RETARDER ([G-08-11](#)).
2. IN A CASE WHERE FASTENERS MUST BE FASTENED INTO THE VERTICAL SURFACE, CARE MUST BE TAKEN TO CREATE THE MEMBRANE TIGHTLY INTO THE ANGLE CHANGE. PLACING THE PLATES TIGHT INTO THE ANGLE CHANGE WILL HELP HOLD THE MEMBRANE IN THE PROPER POSITION.



PARAPET FLASHING

- WEATHERBOND THERMOPLASTIC REINFORCED MEMBRANE
- APPROVED SUBSTRATE
- SEE NOTE

THERMOPLASTIC ROOFING SYSTEM

WBPC-12.1