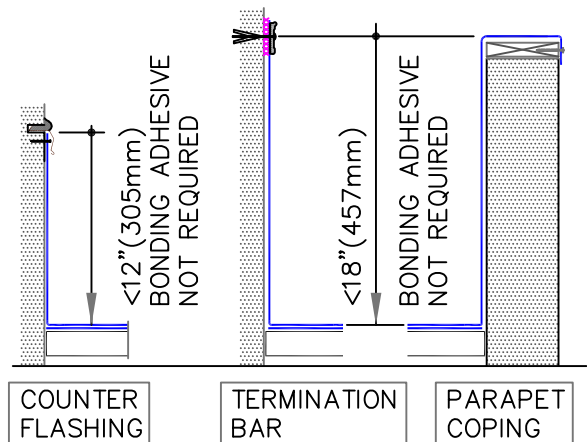


TPO ONLY  
(NOT FOR PVC)

NOTES:

1. REFER TO SPECIAL CONDITION [SPEC. SUPPLEMENTS G-01-11 OR G-08-11](#):
  - 1.1. TO BLOCK INDOOR AIR INFILTRATION AND HUMIDITY AT THE JUNCTION ([G-01-11](#)).
  - 1.2. WHERE ROOF SYSTEM IS DESIGNED WITH A VAPOR RETARDER ([G-08-11](#)).
2. FOR INSIDE CORNER AND RUSS APPLICATION SEE [WBPC-12.2B](#).
3. IN A CASE WHERE FASTENERS MUST BE FASTENED INTO THE VERTICAL SURFACE, CARE MUST BE TAKEN TO CREASE THE RUSS AS WELL AS THE MEMBRANE TIGHTLY INTO THE ANGLE CHANGE TO MAXIMIZE CONTACT BETWEEN THE TAPE AND MEMBRANE. MEMBRANE MUST BE ADHERED TO THE FULL WIDTH OF THE TAPE. PLACING THE PLATES TIGHT INTO THE ANGLE CHANGE WILL HELP HOLD THE RUSS IN THE PROPER POSITION.

DECK TYPE	FASTENERS	PLATES
STEEL, WOOD	HPWX	
CONCRETE	APPROVED CONCRETE FASTENER	HPWX



PARAPET FLASHING WITH PEEL & STICK RPS, PAGE 1 OF 2

- TPO MEMBRANE
- APPROVED SUBSTRATE
- 0 SEE NOTE

THERMOPLASTIC ROOFING SYSTEM  
**WBPC-12.2A**