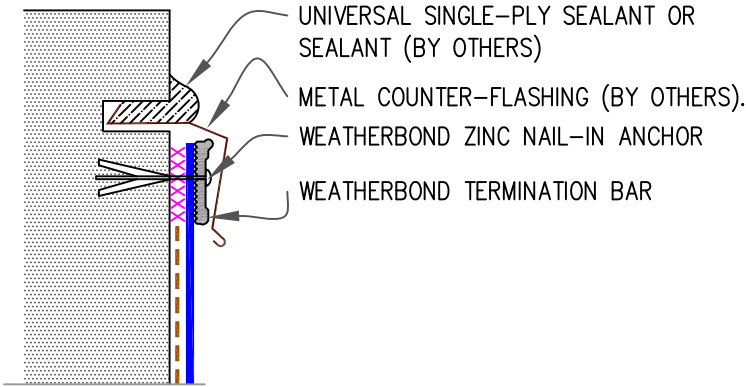
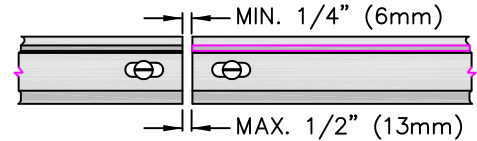


9.1 MECHANICAL TERMINATION WITH COUNTER FLASHING

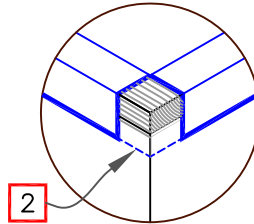
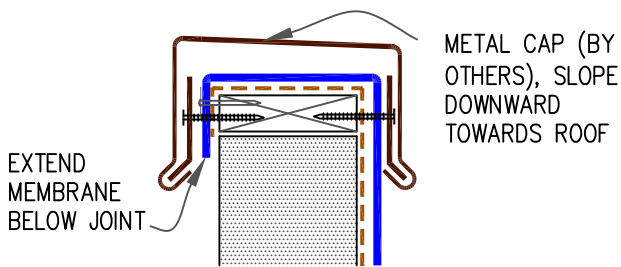


NOTES:

1. APPLY ON HARD SMOOTH SURFACE ONLY; NOT FOR USE ON EXPOSED WOOD.
2. DO NOT WRAP TERMINATION BAR AROUND CORNERS.



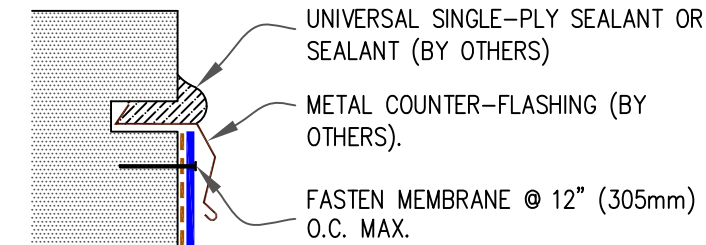
9.2 SHEET METAL COPING (BY OTHERS)



NOTES:

1. FOR WEATHERBOND COPING, REFER TO INSTALLATION INSTRUCTIONS PUBLISHED SEPARATELY.
2. MEMBRANE MUST BE EXTENDED TO CORNERS TO PROVIDE COMPLETE COVERAGE OF THE TOP WALL SURFACE.

9.3 COUNTER FLASHING TERMINATION



NOTE:

1. WHEN MECHANICAL FASTENERS ARE USED TO PENETRATE THE METAL COUNTER-FLASHING, USE EPDM WASHERS, APPLY WATER CUT-OFF MASTIC UNDER THE COUNTER-FLASHING OR CAULK THE FASTENER HEADS.

--- WEATHERBOND BONDING ADHESIVE

xxxxxxx WATER CUT-OFF MASTIC – MUST BE HELD UNDER CONSTANT COMPRESSION.



MEMBRANE TERMINATIONS,  
PAGE 1 OF 2

- WEATHERBOND THERMOPLASTIC REINFORCED MEMBRANE
- APPROVED SUBSTRATE
- SEE NOTE

THERMOPLASTIC ROOFING SYSTEM  
WBPC-9.0A