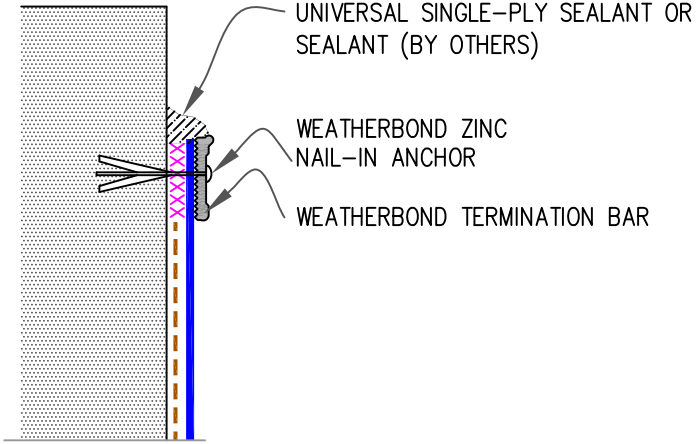
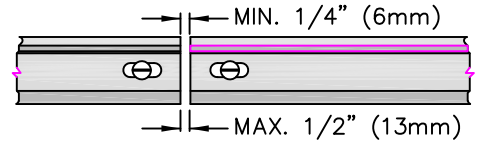


9.4 MECHANICAL TERMINATION

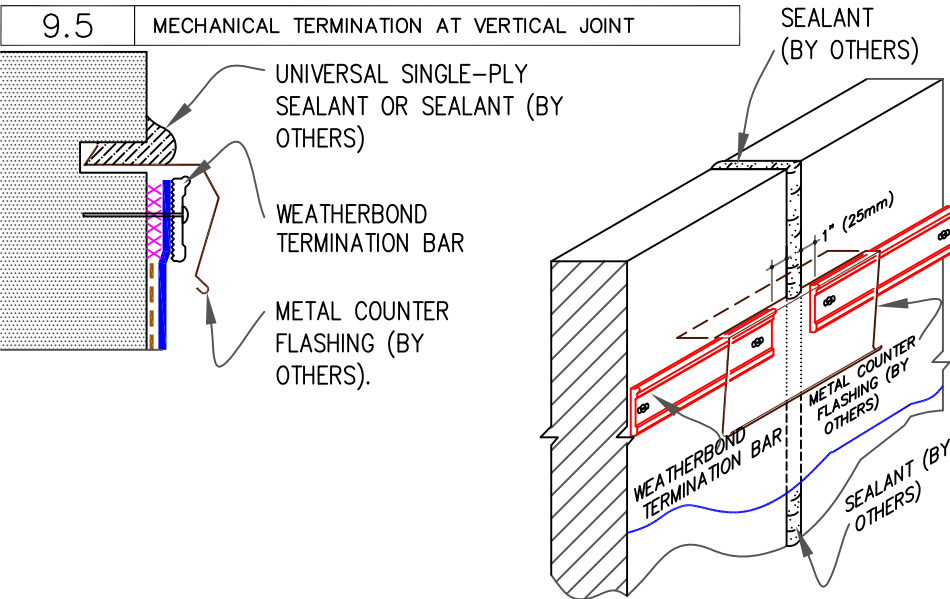


NOTES:

1. APPLY ON HARD SMOOTH SURFACE ONLY; NOT FOR USE ON EXPOSED WOOD.
2. DO NOT WRAP COMPRESSION TERMINATION BAR AROUND CORNER.



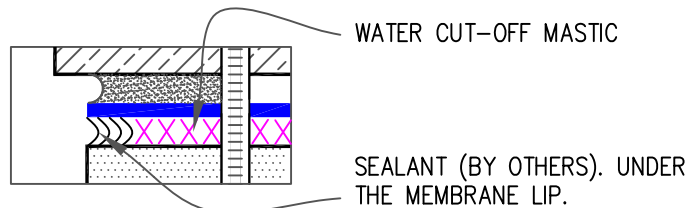
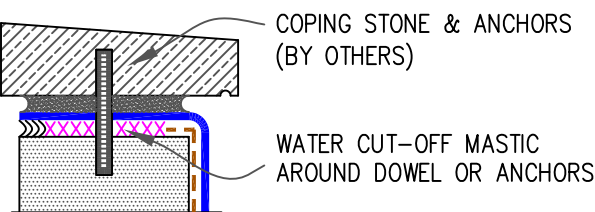
9.5 MECHANICAL TERMINATION AT VERTICAL JOINT



NOTES:

1. APPLY ON HARD SMOOTH SURFACE ONLY.
2. DO NOT WRAP COMPRESSION TERMINATION BAR AROUND CORNERS.
3. VERTICAL JOINTS IN THE PRE-CAST PANEL AS WELL AS ALL GAPS AT THE JUNCTION OF THE TILT-UP PANEL AND ROOF DECK MUST BE FULLY SEALED TO PREVENT AIR INFILTRATION.

9.6 COPING STONE TERMINATION



--- WEATHERBOND BONDING ADHESIVE

xxxxxxx WATER CUT-OFF MASTIC- MUST BE HELD UNDER CONSTANT COMPRESSION.



MEMBRANE TERMINATIONS,
PAGE 2 OF 2

WEATHERBOND THERMOPLASTIC REINFORCED MEMBRANE
 APPROVED SUBSTRATE
 SEE NOTE

THERMOPLASTIC ROOFING SYSTEM
WBPC-9.0B