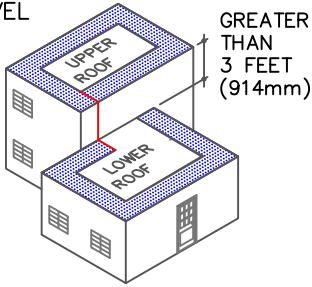
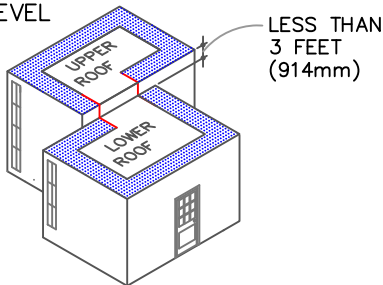


GUIDELINES FOR ROOF PERIMETER ZONES FOR MECHANICALLY ATTACHED ROOF SYSTEM

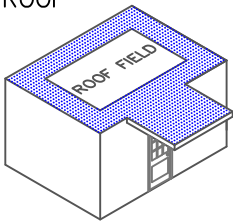
SPLIT LEVEL ROOFS



SPLIT LEVEL ROOFS

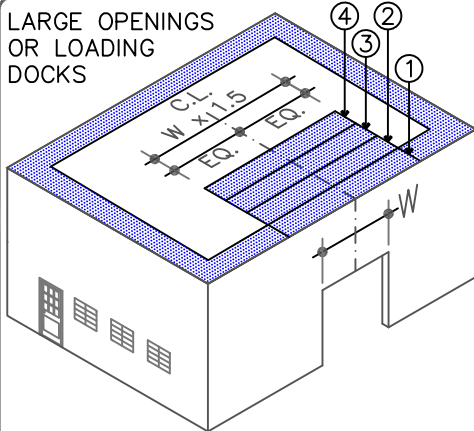


CANOPY ROOF



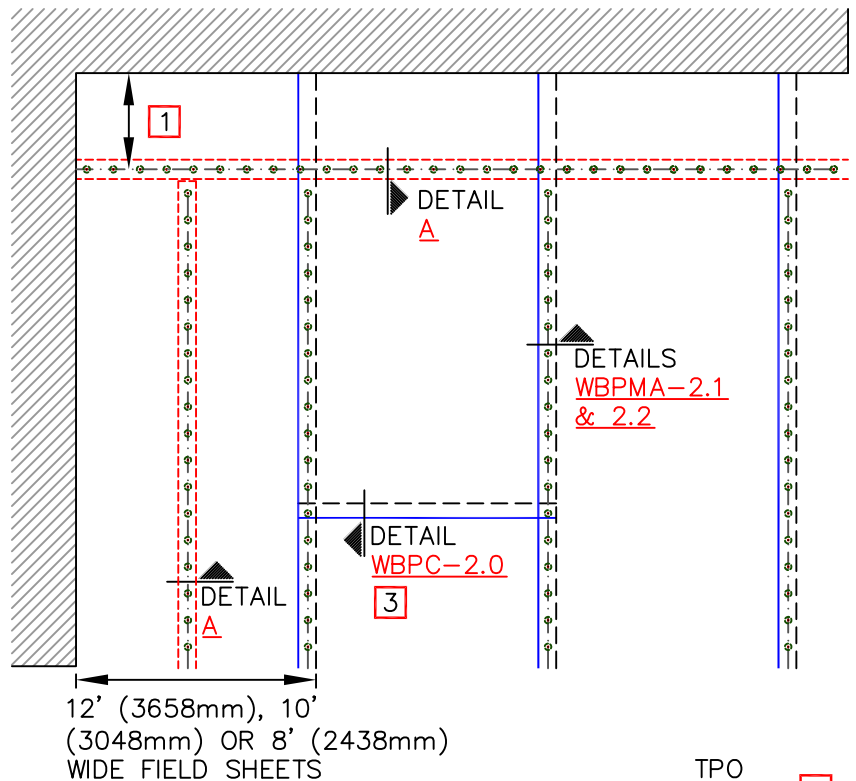
INSTALL PERIMETER SHEETS OVER THE ENTIRE OVERHANG (PROJECTION ROOF) AREA, EXTENDING ONTO THE MAIN ROOF DECK WHEN AT THE SAME LEVEL AS SHOWN.

LARGE OPENINGS OR LOADING DOCKS

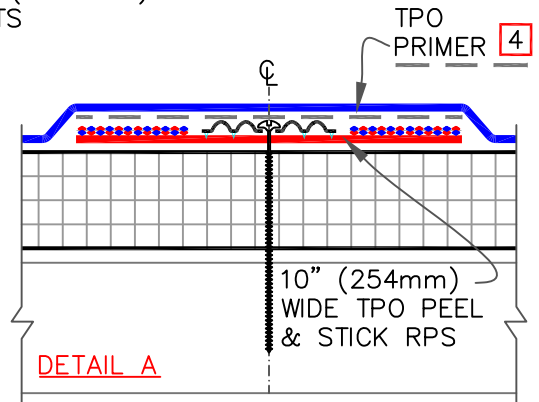


FOUR PERIMETER SHEETS CENTERED OVER LARGE OPENINGS

PERIMETER ZONES



TPO ONLY (NOT FOR PVC)



NOTES:

1. PEEL & STICK RPS SHALL BE POSITIONED 5' (1524mm) TO 6' (1829mm) FROM THE PERIMETER EDGE WHEN USING 10' (3048mm) OR 12' (3658mm) WIDE TPO FIELD SHEETS. WHEN USING 8' (2438mm) WIDE TPO FIELD SHEETS, PEEL & STICK RPS SHALL BE POSITIONED 4' (1219mm) FROM THE PERIMETER EDGE.
2. REFER TO WEATHERBOND SPECIFICATIONS FOR REQUIRED NUMBER OF PERIMETER SHEETS, SHEET WIDTH AND MEMBRANE FASTENING DENSITY.
3. END LAPS DO NOT REQUIRE MECHANICAL FASTENING AND SHALL BE OVERLAPPED 2" (51mm) MINIMUM. REFER TO WEATHERBOND [DETAIL WBPC-2.0](#).
4. TPO PRIMER MUST BE APPLIED TO THE BACK SIDE OF MEMBRANE SURFACE PRIOR TO ADHERING MEMBRANE TO PEEL & STICK RPS.



TPO MEMBRANE SECUREMENT WITH PEEL & STICK RPS

- TPO MEMBRANE
- APPROVED SUBSTRATE
- 0 —●— SEE NOTE

THERMOPLASTIC ROOFING SYSTEM

WBPMA-2.0B