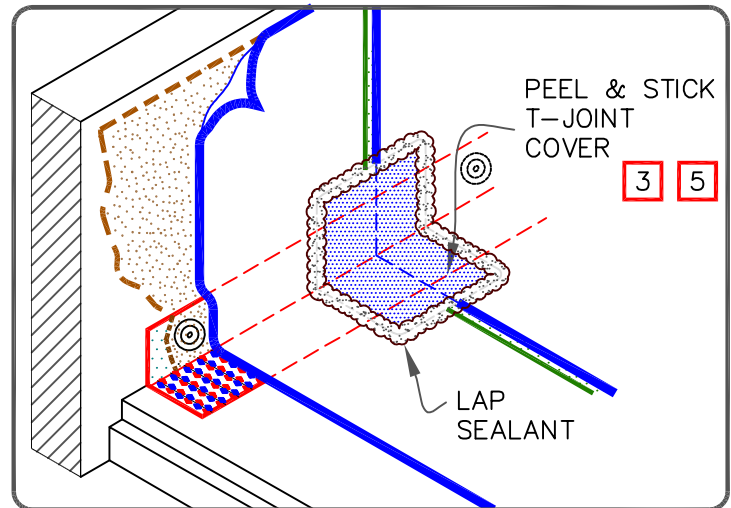


NOTES:

1. FOR CORNERS AND RPS APPLICATION REFER TO [DETAILS WBRC-15.1 OR WBRC-15.2.](#)
2. REFER TO SPECIAL CONDITION [SPEC. SUPPLEMENTS G-01-17 OR G-08-17:](#)
 - 2.1. TO BLOCK INDOOR AIR INFILTRATION AND HUMIDITY AT THE JUNCTION ([G-01-17](#)).
 - 2.2. WHERE ROOF SYSTEM IS DESIGNED WITH A VAPOR RETARDER ([G-08-17](#)).
3. 6" (152mm) WIDE PEEL & STICK UNCURED EPDM FLASHING, IN CONJUNCTION WITH EPDM PRIMER, MAY ALSO BE CENTERED OVER FIELD SPlice AT ANGLE CHANGE.
4. EPDM PRIMER MUST BE APPLIED TO BACK SIDE OF DECK MEMBRANE PRIOR TO COMPLETING SPlice TO PEEL & STICK RPS.
5. PROJECTS USING 90-MIL MEMBRANE, ALL VERTICAL SPlices AT THE BASE OF A WALL AND SPlice INTERSECTIONS MUST BE OVERLAID WITH TWO LAYERS OF PEEL & STICK UNCURED EPDM FLASHING. THE BOTTOM LAYER SHALL BE 6" (152mm) WIDE COVERED WITH A 12" (305mm) WIDE PEEL & STICK UNCURED EPDM FLASHING PIECE. BOTH LAYERS SHALL BE CENTERED AND SEALED WITH CONTINUOUS LAP SEALANT. REFER TO [DETAIL WBRC-2.3.](#)



PARAPET / CURB WITH PEEL & STICK RPS (VERTICAL)

	EPDM MEMBRANE
	APPROVED SUBSTRATE
	SEE NOTE

EPDM ROOFING SYSTEM
WBRC-12.1