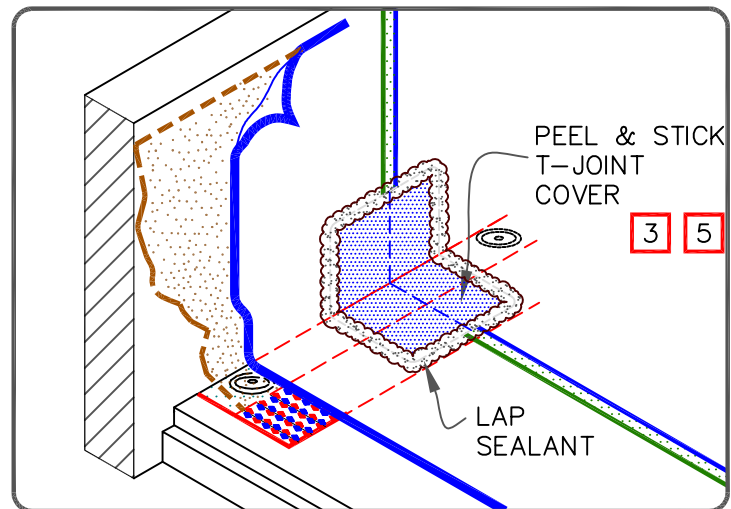


NOTES:

1. FOR CORNERS AND RPS APPLICATION REFER TO [DETAILS WBRC-15.1 OR WBRC-15.2.](#)
2. REFER TO SPECIAL CONDITION [SPEC. SUPPLEMENTS G-01-17 OR G-08-17:](#)
 - 2.1. TO BLOCK INDOOR AIR INFILTRATION AND HUMIDITY AT THE JUNCTION ([G-01-17](#)).
 - 2.2. WHERE ROOF SYSTEM IS DESIGNED WITH A VAPOR RETARDER ([G-08-17](#)).
3. 6" (152mm) WIDE PEEL & STICK UNCURED EPDM FLASHING, IN CONJUNCTION WITH EPDM PRIMER, MAY ALSO BE CENTERED OVER FIELD SPLICE AT ANGLE CHANGE.
4. ON MECHANICALLY-FASTENED ROOFING SYSTEMS, HPWX FASTENERS AND POLYMER SEAM PLATES ARE REQUIRED OVER STEEL DECKS.
5. PROJECTS USING 90-MIL MEMBRANE, ALL VERTICAL SPLICES AT THE BASE OF A WALL AND SPLICE INTERSECTIONS MUST BE OVERLAID WITH TWO LAYERS OF PEEL & STICK UNCURED EPDM FLASHING. THE BOTTOM LAYER SHALL BE 6" (152mm) WIDE COVERED WITH A 12" (305mm) WIDE PEEL & STICK UNCURED EPDM FLASHING PIECE. BOTH LAYERS SHALL BE CENTERED AND SEALED WITH CONTINUOUS LAP SEALANT. REFER TO [DETAIL WBRC-2.3.](#)
6. EPDM PRIMER MUST BE APPLIED TO BACK SIDE OF DECK MEMBRANE PRIOR TO COMPLETING SPLICE TO PEEL & STICK RPS.



PARAPET / CURB WITH PEEL & STICK RPS (HORIZONTAL)

— • EPDM MEMBRANE
 • APPROVED SUBSTRATE
 • SEE NOTE

EPDM ROOFING SYSTEM
WBRC-12.2