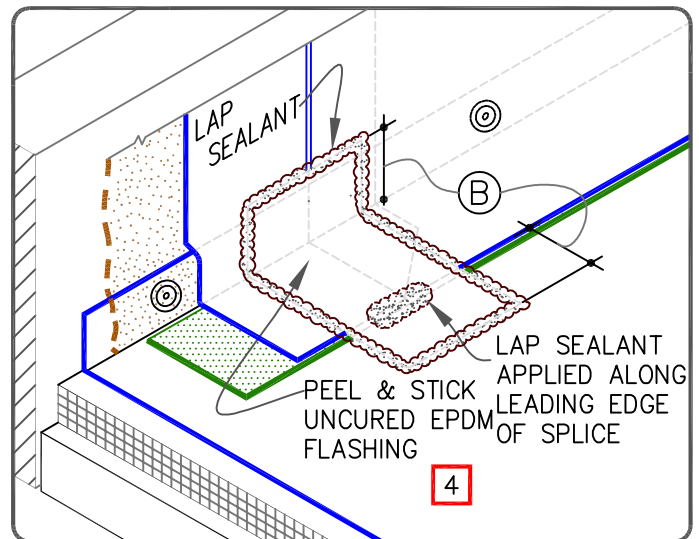


DIMENSIONS		mm	
(A)	1/8"	3	TO
	1/2"	13	MAX.
(B)	3"	76	

NOTES:

- PRIOR TO THE INSTALLATION OF P&S SEAM TAPE AND PEEL & STICK FLASHING APPLY EPDM PRIMER TO SPLICE AREAS.
- REFER TO SPECIAL CONDITION [SPEC. SUPPLEMENTS G-01-17 OR G-08-17](#):
 - TO BLOCK INDOOR AIR INFILTRATION AND HUMIDITY AT THE JUNCTION ([G-01-17](#)).
 - WHERE ROOF SYSTEM IS DESIGNED WITH A VAPOR RETARDER ([G-08-17](#)).
- SEAM FASTENING PLATE/FASTENER MAY BE INSTALLED INTO THE STRUCTURAL DECK. HPWX FASTENERS AND POLYMER SEAM PLATES ARE REQUIRED FOR MECHANICALLY-FASTENED ROOFING SYSTEMS OVER STEEL DECKS.
- PROJECTS USING 90-MIL MEMBRANE, ALL VERTICAL SPLICES AT THE BASE OF A WALL AND SPLICE INTERSECTIONS MUST BE OVERLAID WITH TWO LAYERS OF PEEL & STICK UNCURED EPDM FLASHING. THE BOTTOM LAYER SHALL BE 6" (152mm) WIDE COVERED WITH A 12" (305mm) WIDE PEEL & STICK UNCURED EPDM FLASHING PIECE. BOTH LAYERS SHALL BE CENTERED AND SEALED WITH CONTINUOUS LAP SEALANT. REFER TO [DETAIL WBRC-2.3](#).
- LAP SEALANT IS REQUIRED ON CUT EDGES OF REINFORCED MEMBRANE.



PARAPET / CURB WITH SEPARATE MEMBRANE FLASHING

- EPDM MEMBRANE
- APPROVED SUBSTRATE
- 0 SEE NOTE

EPDM ROOFING SYSTEM

WBRC-12.3