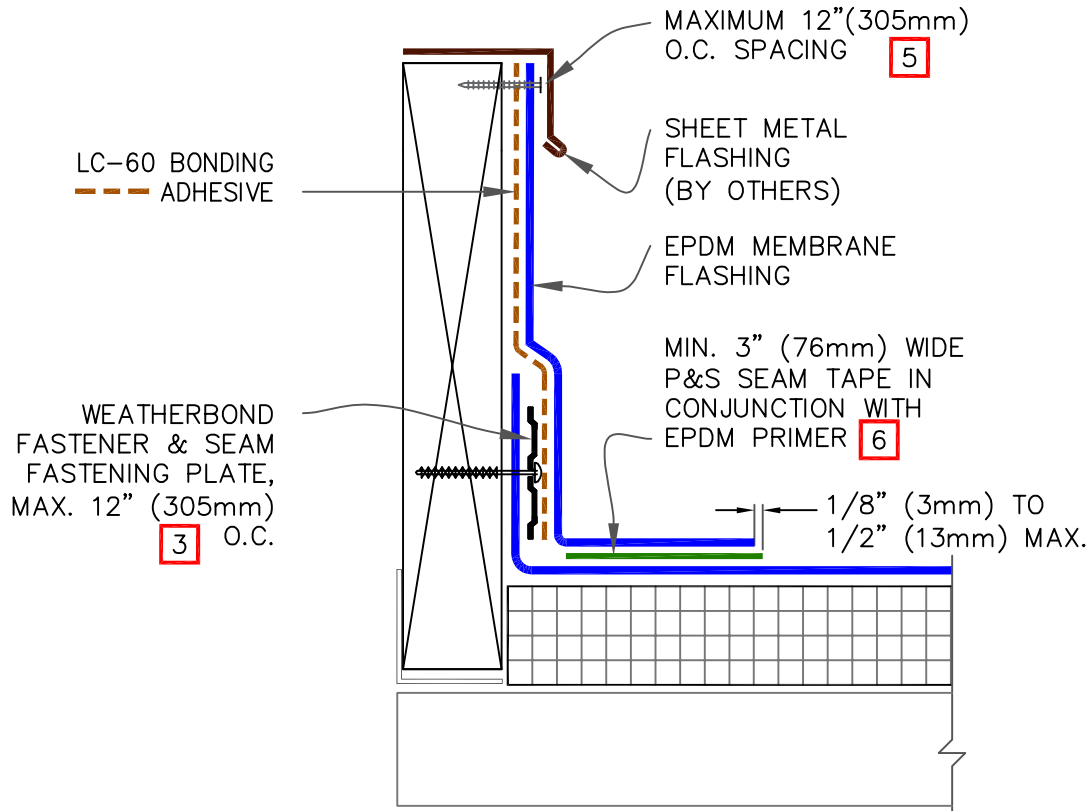


CAUTION

FOR PROJECTS USING 90-MIL MEMBRANE, REFER TO [DETAIL WBRC-15.8](#) FOR REQUIRED CORNER ENHANCEMENTS.



NOTES:

1. IF THE VERTICAL SPLICE ON THE CURB FLASHING IS NOT LOCATED AT THE CORNER, 6" (152mm) WIDE PEEL & STICK UNCURED EPDM OR T-JOINT FLASHING, IN CONJUNCTION WITH EPDM PRIMER, MUST BE CENTERED OVER FIELD SPLICE AT ANGLE CHANGE.
2. LAP SEALANT IS REQUIRED ON CUT-EDGES OF REINFORCED MEMBRANE.
3. SEAM FASTENING PLATES/FASTENERS MAY BE INSTALLED INTO THE STRUCTURAL DECK.
4. WHEN MECHANICAL FASTENERS ARE USED TO PENETRATE THE METAL COUNTER-FLASHING, USE EPDM WASHERS, APPLY WATER CUT-OFF MASTIC UNDER THE COUNTER-FLASHING OR CAULK THE FASTENER HEADS.

