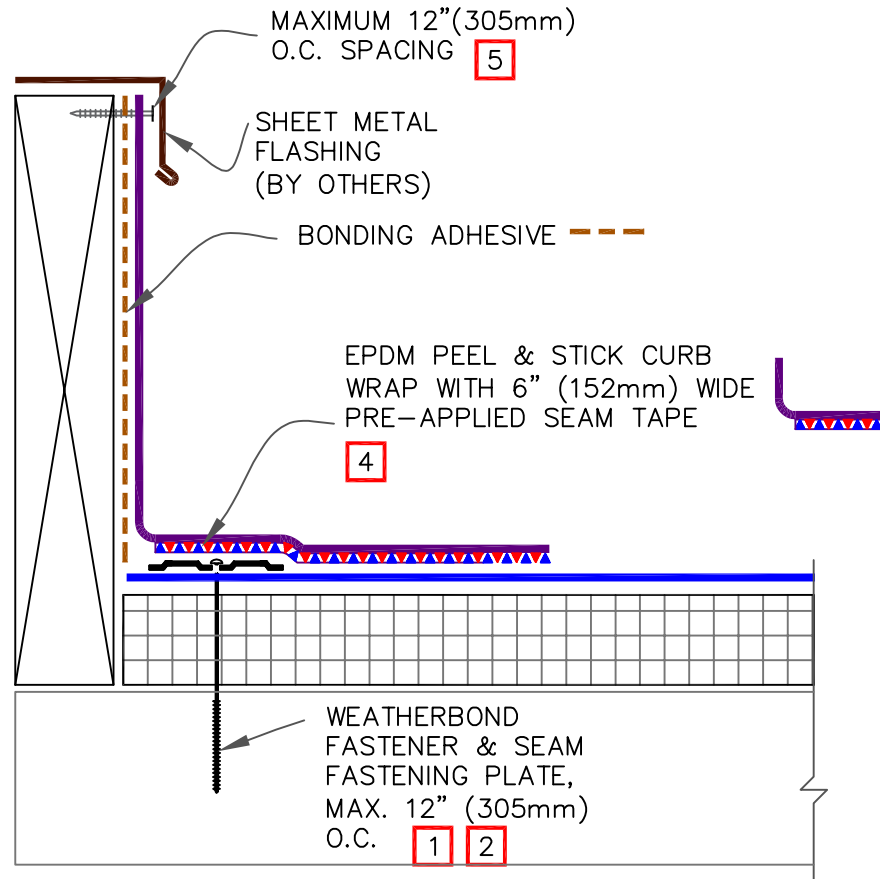


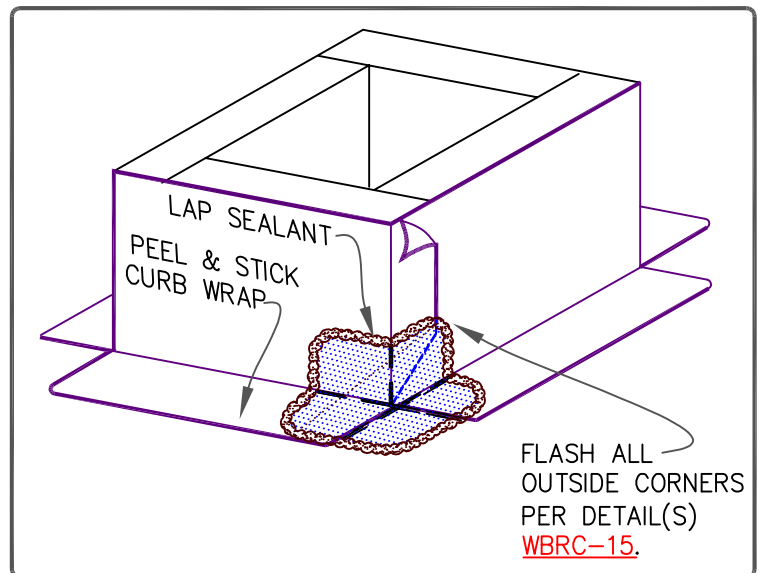
CAUTION

FOR PROJECTS USING 90-MIL MEMBRANE, REFER TO [DETAIL WBRC-15.8](#) FOR REQUIRED CORNER ENHANCEMENTS.



NOTES:

- ON MECHANICALLY FASTENED ROOFING SYSTEMS, HPWX FASTENERS AND POLYMER SEAM PLATES ARE REQUIRED OVER STEEL DECKS.
- SEAM FASTENING PLATES/FASTENERS MAY BE INSTALLED INTO THE VERTICAL SUBSTRATE.
- IF THE VERTICAL SPLICE ON THE CURB FLASHING IS NOT LOCATED AT THE CORNER, 6" (152mm) WIDE PEEL & STICK UNCURED EPDM OR T-JOINT FLASHING, IN CONJUNCTION WITH EPDM PRIMER, MUST BE CENTERED OVER FIELD SPLICE AT ANGLE CHANGE.
- PRIOR TO THE INSTALLATION OF PEEL & STICK CURB WRAP, APPLY EPDM PRIMER TO SPLICE AREA.
- WHEN MECHANICAL FASTENERS ARE USED TO PENETRATE THE METAL COUNTER-FLASHING, USE EPDM WASHERS, APPLY WATER CUT-OFF MASTIC UNDER THE COUNTER-FLASHING OR CAULK THE FASTENER HEADS.



PEEL & STICK CURB
WRAP

- EPDM MEMBRANE
- APPROVED SUBSTRATE
- SEE NOTE

EPDM ROOFING
SYSTEM

WBRC-5.2