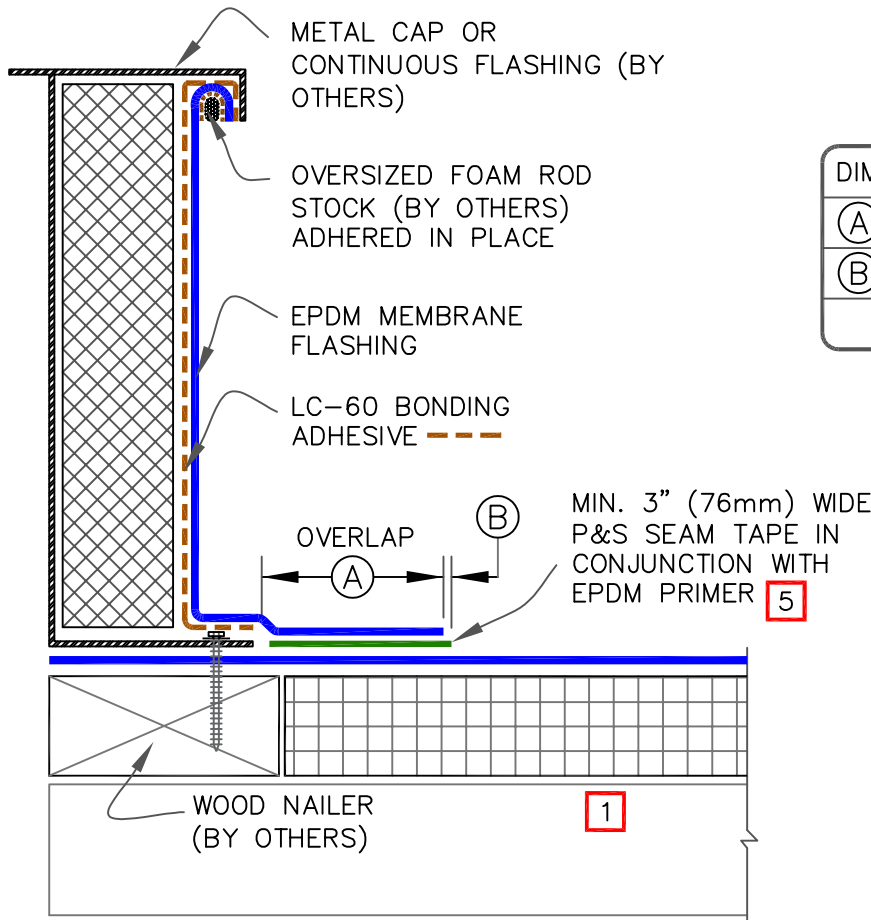


CAUTION

FOR PROJECTS USING 90-MIL MEMBRANE, REFER TO [DETAIL WBRC-15.8](#) FOR REQUIRED CORNER ENHANCEMENTS.



DIMENSIONS		mm	
(A)	3"	76	APPROX.
(B)	1/8"	3	MIN.
	1/2"	13	MAX.

NOTES:

1. WOOD NAILER MUST EXTEND PAST TOTAL WIDTH OF CURB FLANGE.
2. LENGTH OF ROD STOCK IS LIMITED TO 4' (1219mm). USE INDIVIDUAL SECTIONS OF ROD STOCK FOR LONGER DIMENSIONS.
3. 7"X9" (178mm X 229mm) PEEL & STICK CORNERS CANNOT BE USED FOR THIS DETAIL WHEN THE FLANGE IS LOCATED ON TOP OF THE MEMBRANE DUE TO INCOMPLETE COVERAGE OF THE METAL FLANGE AT CORNERS. REFER TO [DETAIL WBRC-15.6](#).
4. DETAIL IS NOT ACCEPTABLE FOR VIBRATING ROOF TOP UNITS.

