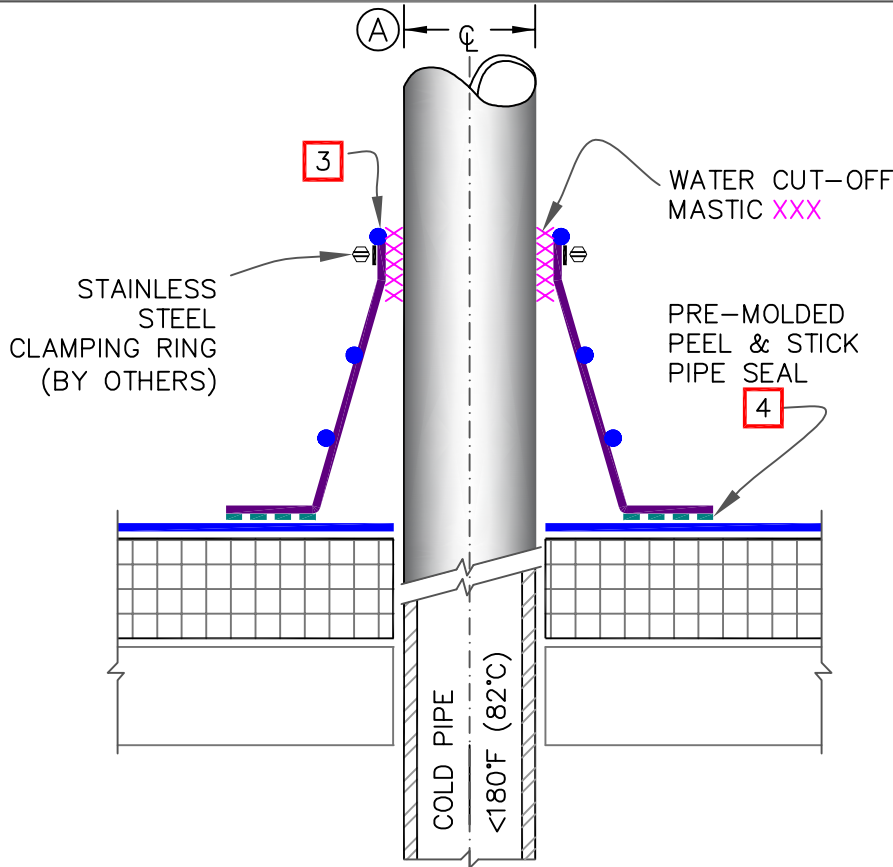


CAUTION

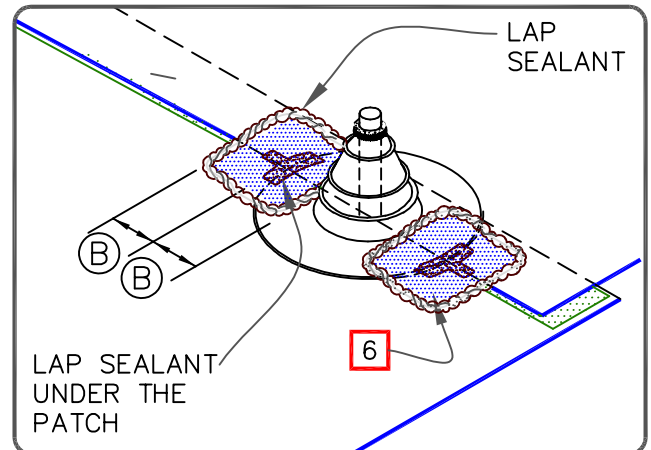
FOR PROJECTS USING 90-MIL MEMBRANE, REFER TO [DETAIL WBRC-8.1B](#). FOR REQUIRED FLASHING ENHANCEMENTS.



NOTES:

1. REMOVE ALL LEAD AND OTHER FLASHING BEFORE INSTALLING PEEL & STICK PIPE SEAL.
2. TEMPERATURE OF PIPE PENETRATION MUST NOT EXCEED 180°F (82°C).
3. PRE-MOLDED PIPE FLASHING MUST HAVE INTACT RIB AT THE TOP EDGE REGARDLESS OF PIPE DIAMETER.
4. EPDM PRIMER MUST BE APPLIED TO MEMBRANE SURFACE PRIOR TO APPLYING PEEL & STICK PIPE SEAL.
5. DECK FLANGES OF THE PEEL & STICK PIPE SEAL SHALL NOT BE OVERLAPPED, CUT OR APPLIED OVER ANY ANGLE CHANGE.
6. WHEN A FIELD SPLICE INTERSECTS A PIPE SEAL, APPLY LAP SEALANT ALONG THE EDGE OF THE MEMBRANE SPLICE COVERING THE EXPOSED SPLICE TAPE 1/2" (13mm) IN EACH DIRECTION FROM THE SPLICE INTERSECTION & OVERLAY WITH A 6"X6" (152mm X 152mm) T-JOINT COVER.
7. ON MECHANICALLY-FASTENED ROOFING SYSTEMS, ADDITIONAL MEMBRANE SECUREMENT IS REQUIRED. REFER TO [DETAIL WBRMA-8.1](#).

DIMENSIONS		mm	
(A)	1/2"	13	TO
	6"	152	
(B)	3"	76	



PRE-MOLDED PEEL & STICK PIPE SEAL

- EPDM MEMBRANE
- APPROVED SUBSTRATE
- SEE NOTE

EPDM ROOFING SYSTEM
WBRC-8.1A