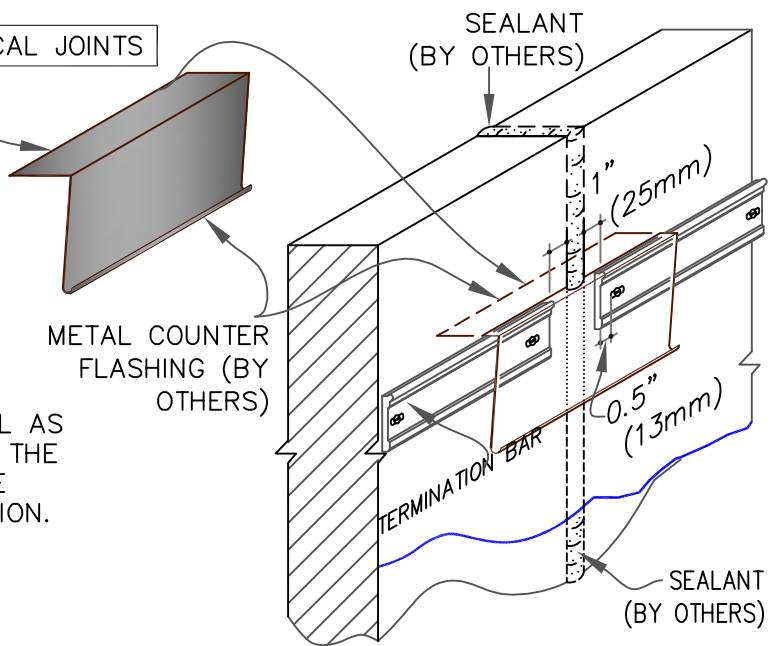
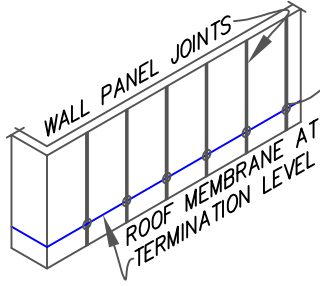


9.5 MECHANICAL TERMINATION AT VERTICAL JOINTS

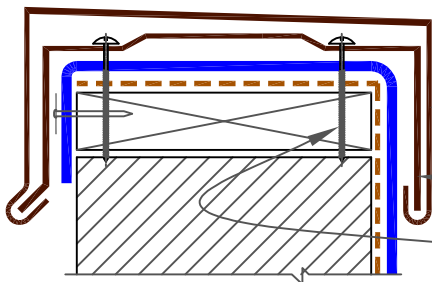
NOTES:

1. THIS DETAIL MUST BE USED FOR ANY PROJECT REGARDLESS OF WARRANTY.
2. VERTICAL JOINTS IN THE PRE-CAST PANEL AS WELL AS ALL GAPS AT THE JUNCTION OF THE TILT-UP PANEL AND ROOF DECK MUST BE FULLY SEALED TO PREVENT AIR INFILTRATION.
3. APPLY ON HARD SMOOTH SURFACE ONLY.



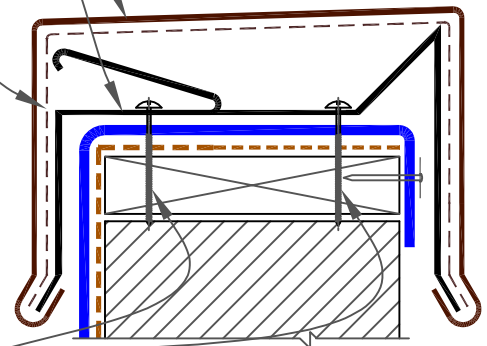
9.6 SecurEDGE COPING

OPTION 1



- COPING
- 20 GA. GALVANIZED ANCHOR CLIPS @ 6 FEET (1829mm) O.C.
- CONCEALED SPLICE PLATE AT EACH JOINT OF COPING
- FORMED COPING 10 FEET (3048mm) LENGTH
- ANCHOR CLEAT
- HPW FASTENER
- HEX-HEAD FASTENERS

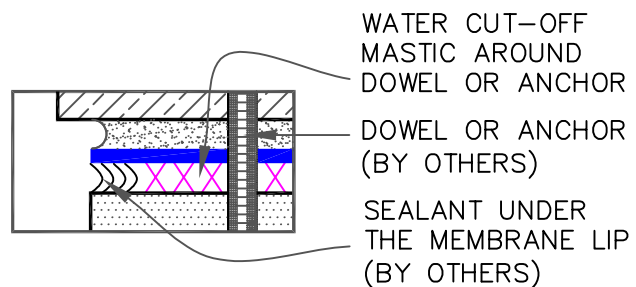
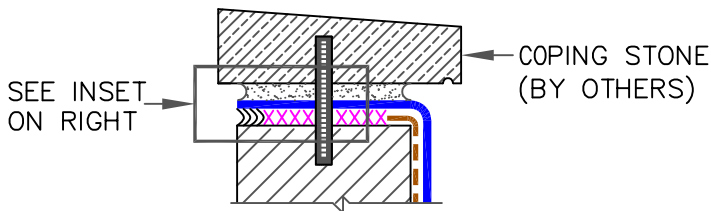
OPTION 2



NOTES:

1. MEMBRANE MUST BE EXTENDED AT CORNERS TO PROVIDE COMPLETE COVERAGE OF THE TOP WALL SURFACE. REFER TO [DETAIL WBRC-9.2A](#).
2. REFER TO [PRO COPING INSTALLATION INSTRUCTION](#) MANUAL FOR STEP-BY-STEP INSTRUCTION PROCEDURES.

9.7 COPING STONE TERMINATION



--- APPLICABLE BONDING ADHESIVE

xxx WATER CUT-OFF MASTIC- MUST BE HELD UNDER CONSTANT COMPRESSION.