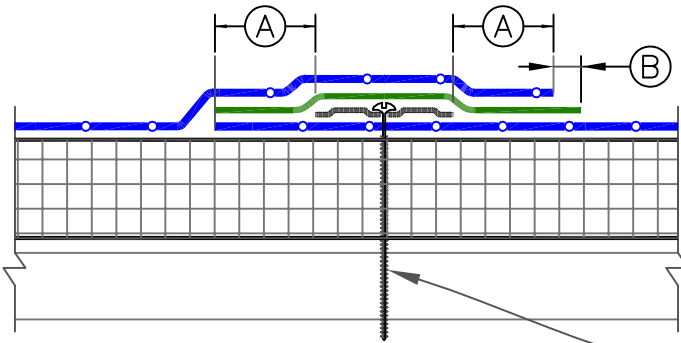
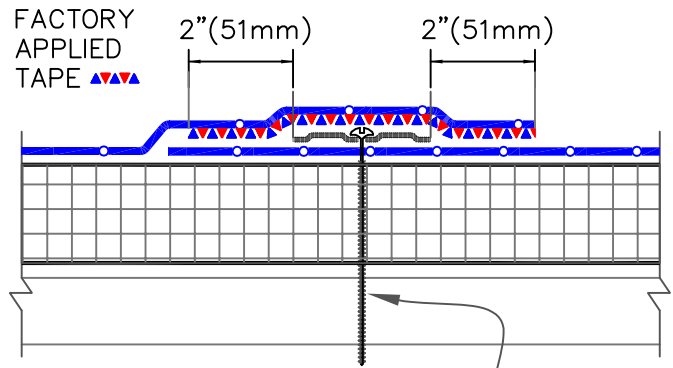


6" (152mm) WIDE P&S SEAM TAPE SPLICE

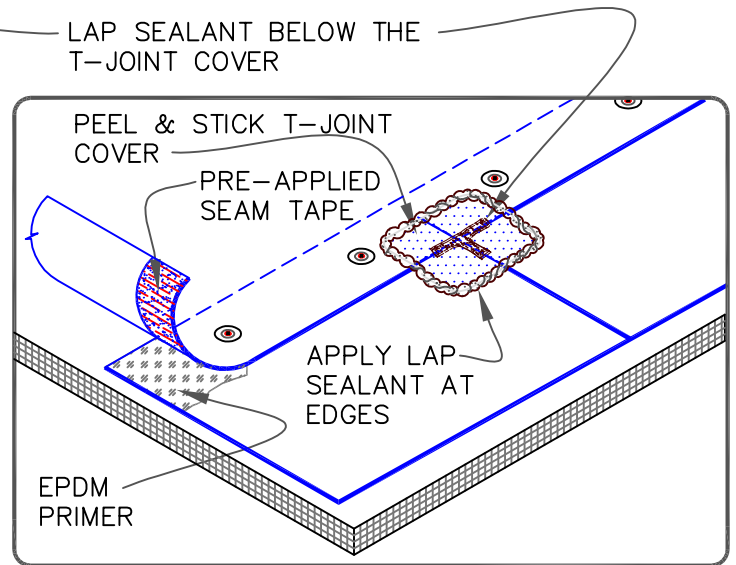
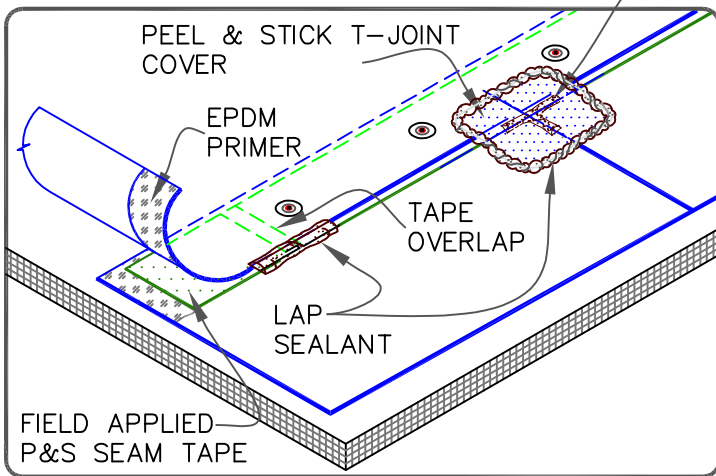


6" (152mm) WIDE PRE-APPLIED SEAM TAPE



SEAM FASTENING PLATE & FASTENER POSITIONED OVER PRE-PRINTED BLUE MARKS. FASTEN MAX. 12" (305mm) O.C. 1

DIMENSIONS	mm	
(A)	2"	51
(B)	1/8"	3 TO
	1/2"	13



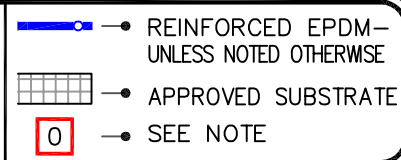
NOTES:

1. HPWX FASTENERS AND POLYMER SEAM PLATES ARE REQUIRED OVER STEEL DECKS.
2. PRIOR TO THE INSTALLATION OF SPLICE TAPE, APPLY EPDM PRIMER TO SPLICE AREAS.
3. FIELD APPLIED P&S SEAM TAPE IS TO BE OVERLAPPED A MINIMUM OF 1" (25mm) AT THE ENDS OF EACH CUT PIECE. APPLY LAP SEALANT AT TAPE OVERLAPS 2" (51mm) IN EACH DIRECTION AS SHOWN.
4. APPLY LAP SEALANT ALONG THE LEADING EDGE OF THE MEMBRANE SPLICE UNDER THE 6"X6" (152 X 152mm) T-JOINT COVER, COVERING THE EXPOSED SPLICE TAPE 1/2" (13mm) IN ALL DIRECTIONS FROM THE SPLICE INTERSECTION.
5. END LAPS SHALL BE SPLICED USING EITHER 3" (76mm) OR 6" (152mm) WIDE P&S SEAM TAPE. REFER TO DETAIL [WBRMA-2.2](#).
6. LAP SEALANT IS REQUIRED ON CUT EDGES OF REINFORCED EPDM MEMBRANE.

PRE-APPLIED SEAM TAPE



MEMBRANE SPLICE



MECHANICALLY ATTACHED EPDM
WBRMA-2.1