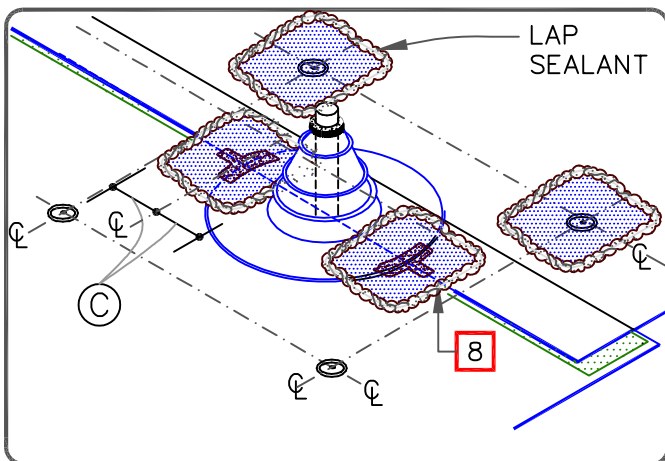


NOTES:

1. REMOVE ALL LEAD AND OTHER FLASHING BEFORE INSTALLING PIPE SEAL.
2. TEMPERATURE OF PIPE MUST NOT EXCEED 180°F (82°C).
3. PRE-MOLDED PIPE SEAL MUST HAVE INTACT RIB AT THE TOP EDGE REGARDLESS OF PIPE DIAMETER.
4. INSTALL A MINIMUM OF 4 SEAM FASTENING PLATES FOR PIPES WITH A DIAMETER UP TO 6" (152mm). ADDITIONAL SEAM FASTENING PLATES WILL BE REQUIRED FOR PIPES GREATER THAN 6" (152mm) IN DIAMETER AND SHALL BE SPACED 12" (305mm) ON CENTER MAXIMUM.
5. HPWX FASTENERS AND POLYMER SEAM PLATES ARE REQUIRED OVER STEEL DECKS.
6. EPDM PRIMER MUST BE APPLIED TO MEMBRANE SURFACE PRIOR TO APPLYING PEEL & STICK CURED COVER STRIP (OVER FASTENING PLATES) AND PEEL & STICK PIPE SEAL.
7. DECK FLANGES OF THE PEEL & STICK PIPE SEAL SHALL NOT BE OVERLAPPED, CUT OR APPLIED OVER ANY ANGLE CHANGE.
8. WHEN A FIELD SPLICE INTERSECTS A PIPE SEAL, APPLY LAP SEALANT ALONG THE EDGE OF THE MEMBRANE SPLICE COVERING THE EXPOSED SPLICE TAPE 1/2" (13mm) IN EACH DIRECTION FROM THE SPLICE INTERSECTION & OVERLAY WITH A 6"X6" (152 X 152mm) T-JOINT COVER.

DIMENSIONS	mm		
(A)	1/2"	13	TO
	6"	152	
(B)	6"	152	TO
	12"	305	
(C)	3"	76	



PEEL & STICK PIPE SEAL

- REINFORCED EPDM—UNLESS NOTED OTHERWISE
- APPROVED SUBSTRATE
- SEE NOTE

MECHANICALLY ATTACHED EPDM

WBRMA-8.1