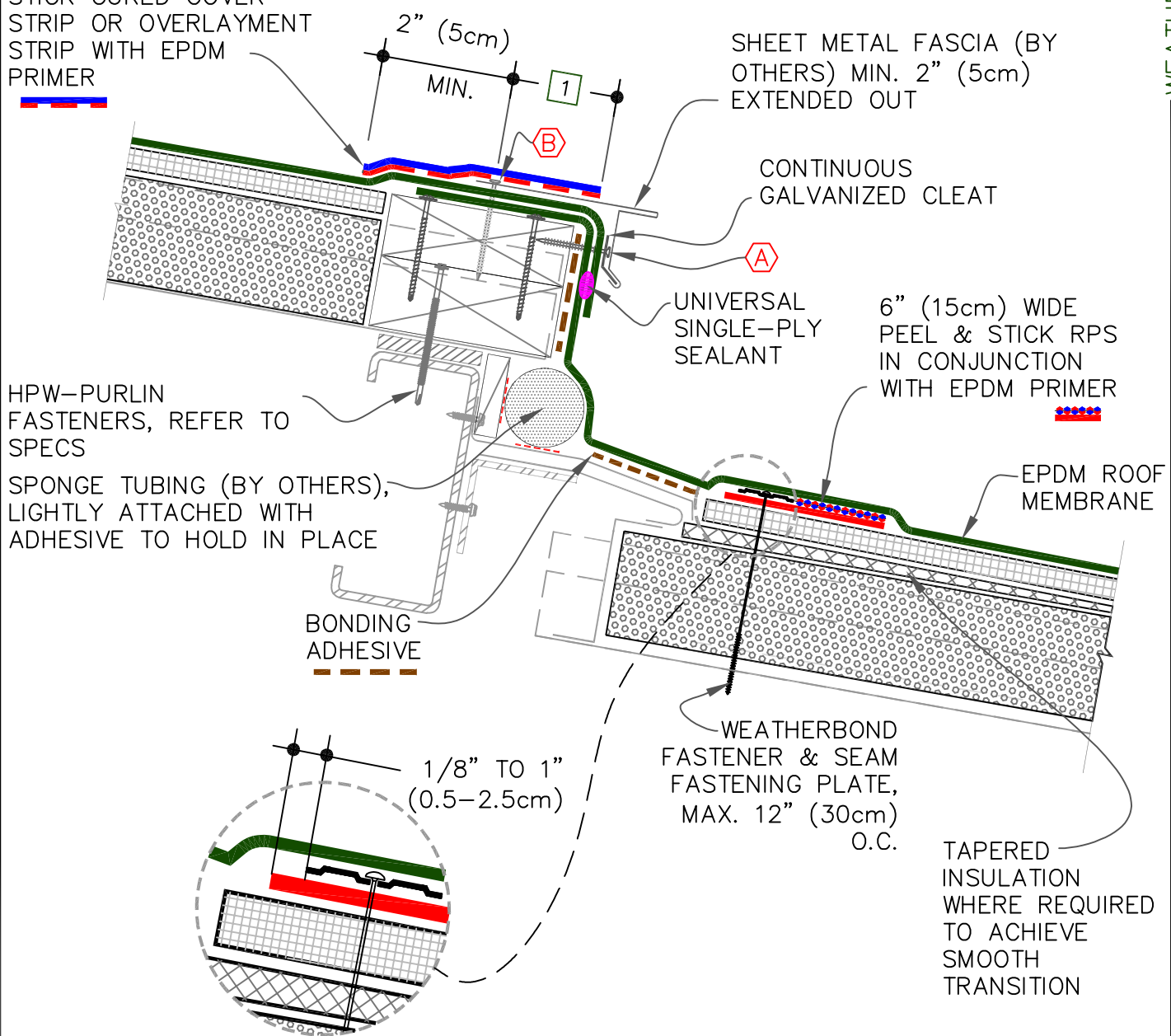


A 1-1/2" (38mm) RING SHANK NAILS @ 6" (15cm) O.C. MAXIMUM

B HPW FASTENERS @ 12" (30cm) O.C. OR RING-SHANK NAILS @ 4" (10cm) O.C. & STAGGERED 3/4" (2cm) O.C.

6" (15cm) WIDE PEEL & STICK CURED COVER STRIP OR OVERLAYMENT STRIP WITH EPDM PRIMER



NOTE:

1. DECK FLANGE MUST BE TOTALLY COVERED WITH PEEL & STICK CURED COVER STRIP WITH MINIMUM 2" (5cm) COVERAGE PAST FASTENER HEAD.
2. REFER TO [MR Z1.1](#) & [MR Z1.2](#) AT THE END OF THIS SECTION.



EXPANSION JOINT AT STEP DOWN CONDITION

	● HIGH DENSITY RECOVER BOARD
	● IN-FILL INSULATION
A	● SEE NOTE(S)
0	

METAL RETROFIT
MR | E3.1