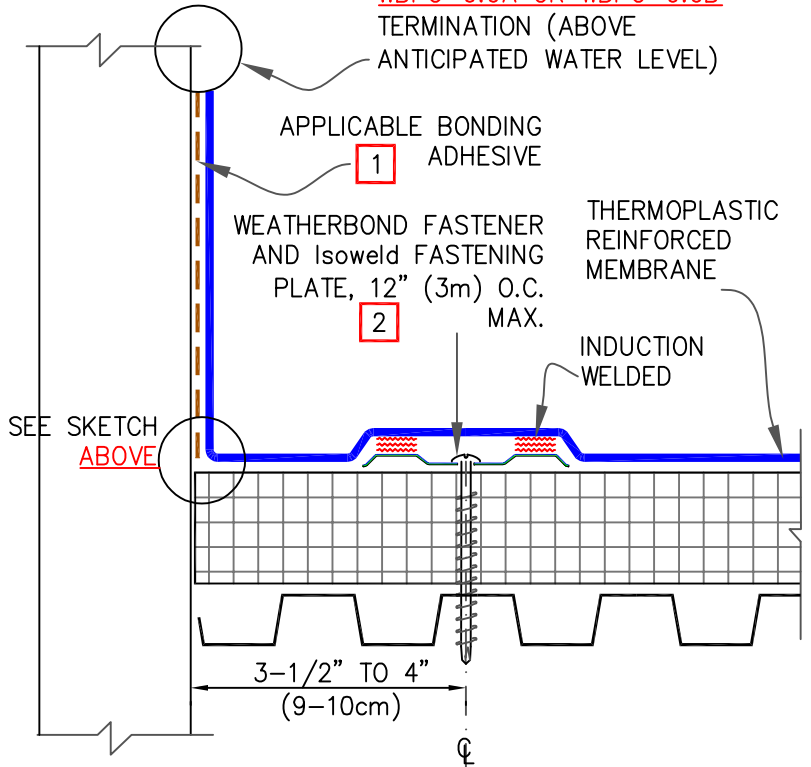


*100mm HORIZONTAL:16mm VERTICAL

APPLICABLE DETAIL FROM [WBPC-9.0A](#) OR [WBPC-9.0B](#)



ANGLE CHANGE SECUREMENT

NOTES:

1. WEATHERBOND TPO MEMBRANE REQUIRES WEATHERBOND TPO BONDING ADHESIVE AND WEATHERBOND PVC MEMBRANE REQUIRES WEATHERBOND PVC BONDING ADHESIVE.
2. HPWX FASTENERS AND Isoweld PLATES ARE REQUIRED OVER STEEL AND WOOD DECKS. FOR WIND SPEEDS GREATER THAN 72 MPH PLEASE CONTACT WEATHERBOND FOR REQUIRED FASTENING ENHANCEMENTS.