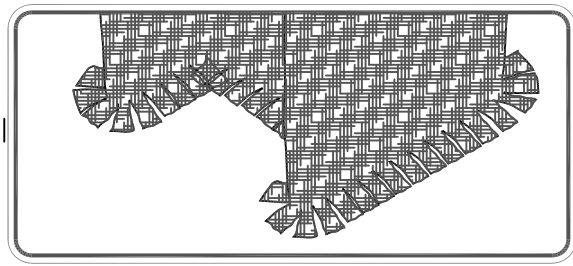
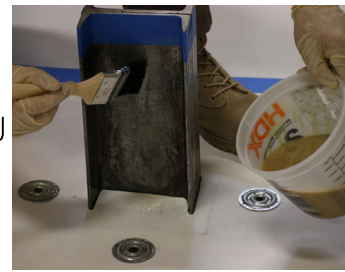


SACHET MIXING AND PRIMER APPLICATION



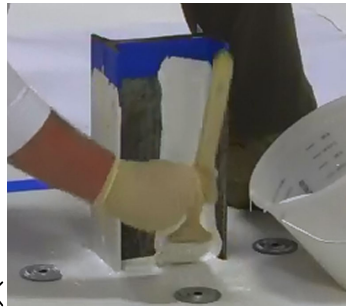
STEP 9



PRIME I-BEAM AND METAL PLATES. ENSURE AMBIENT AIR TEMPERATURE IS 40° & RISING. ALLOW PRIMER TO CURE UNTIL TACK-FREE.

STEP 10

APPLY 1ST COAT OF LIQUISEAL Liquid Flashing Resin & INSTALL LIQUISEAL Flashing Fleece ON VERTICAL SURFACES.



FLASHING FINAL INSTALLATION

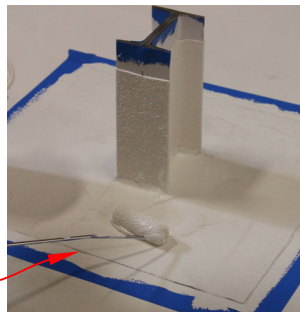
STEP 11

IMMEDIATELY APPLY A 2ND COAT OF LIQUISEAL Liquid Flashing Resin ENSURING THE FLEECE IS COMPLETELY SATURATED.



APPLY 1ST COAT OF RESIN AND INSTALL FLEECE ON HORIZONTAL SURFACES. IMMEDIATELY APPLY A 2ND COAT OF RESIN ENSURING FLEECE IS COMPLETELY SATURATED.

STEP 12

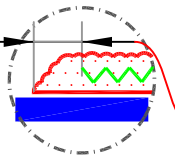


STEP 13



TOUCH UP AS NEEDED TO ENSURE ENTIRE FLEECE IS COMPLETELY SATURATED.

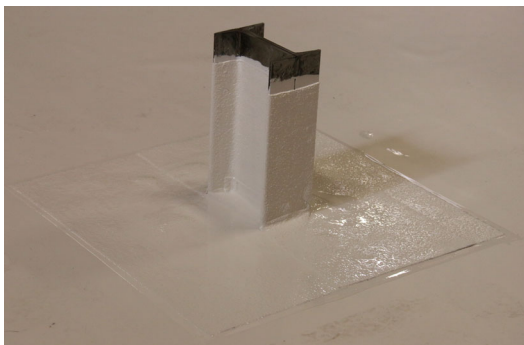
FLEECE MUST BE COVERED 1/4" - 1/2" (1cm - 1.5cm) BEYOND EDGES



M

N

STEP 14



REMOVE TAPE IMMEDIATELY ENSURING THAT RESIN EXTENDS 1/4" - 1/2" (1cm - 1.5cm) BEYOND EDGE OF FLEECE

COMPLETED FLASHING

