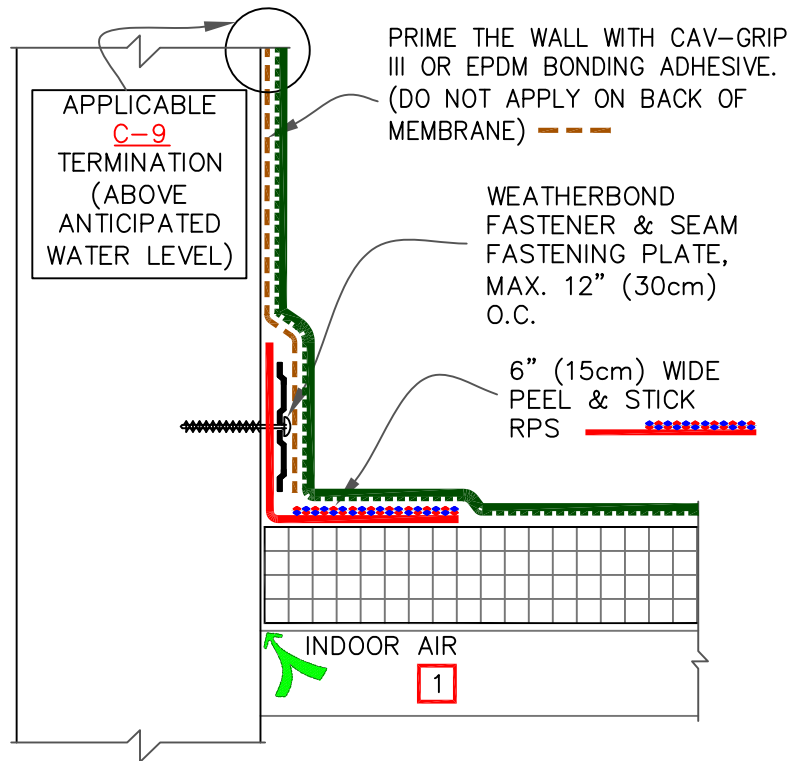
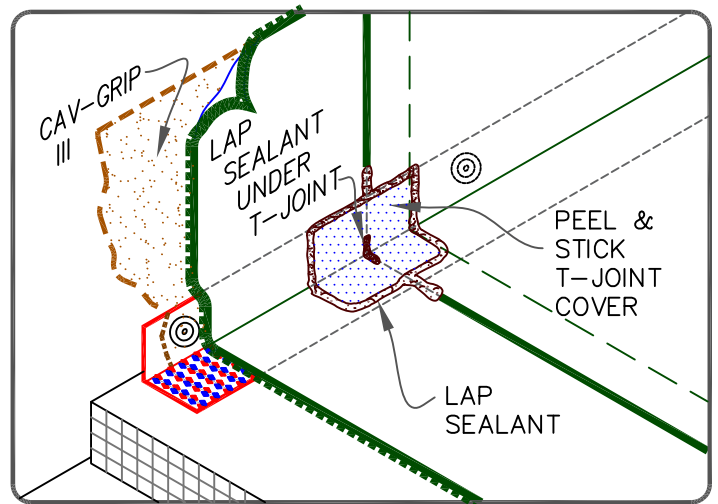


OPTIONAL: SEAM FASTENING PLATE/FASTENER MAY BE INSTALLED INTO THE STRUCTURAL DECK ALSO.



NOTES:

1. REFER TO SPEC. SUPPLEMENT SECTIONS:
  - 1.1. G-01-11: TO BLOCK INDOOR AIR INFILTRATION AND HUMIDITY AT THE JUNCTION.
  - 1.2. G-08-11: WHERE ROOF SYSTEM IS DESIGNED WITH A VAPOR RETARDER.
2. FOR CORNERS AND RTS APPLICATION, REFER TO DETAILS WBRC-15.1 OR WBRC-15.2.



PARAPET / CURB WITH PEEL & STICK RPS (VERTICAL)

	• EPDM MEMBRANE
	• APPROVED SUBSTRATE
	• SEE NOTE

PEEL & STICK TECHNOLOGY  
PS-12.1