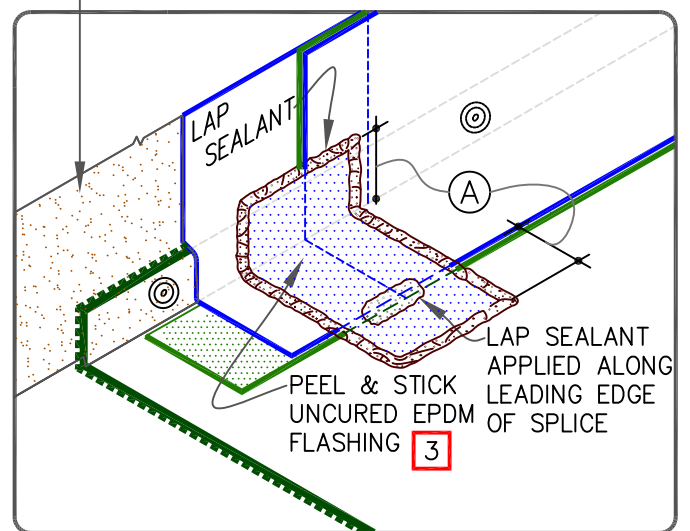


NOTES:

1. REFER TO SPEC. SUPPLEMENT SECTIONS:
 - 1.1. G-01-18: TO BLOCK INDOOR AIR INFILTRATION AND HUMIDITY AT THE JUNCTION.
 - 1.2. G-08-18: WHERE ROOF SYSTEM IS DESIGNED WITH A VAPOR RETARDER.
2. SEAM FASTENING PLATE/FASTENER MAY BE INSTALLED INTO THE STRUCTURAL DECK ALSO.
3. APPLY PEEL & STICK UNCURED EPDM FLASHING COVERING VERTICAL SPLICE INTERSECTIONS.

WEATHERBOND EPDM BONDING ADHESIVE OR CAV-GRIP III

DIMENSIONS		cm
(A)	3"	7.5



PARAPET/CURB FLASHING WITH SEPARATE REGULAR EPDM FLASHING

- • EPDM MEMBRANE
- APPROVED SUBSTRATE
- 0 • SEE NOTE

PEEL & STICK TECHNOLOGY
PS-12.2