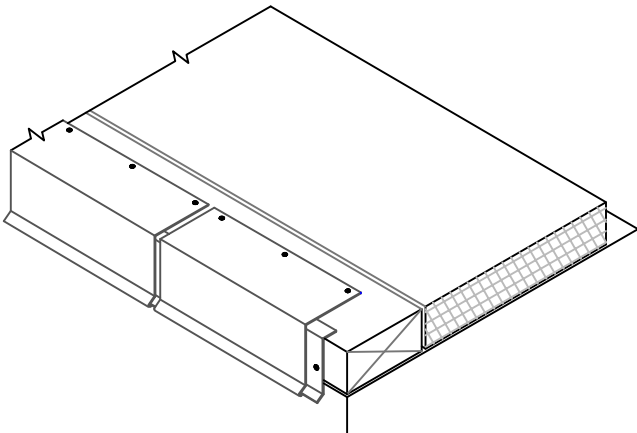
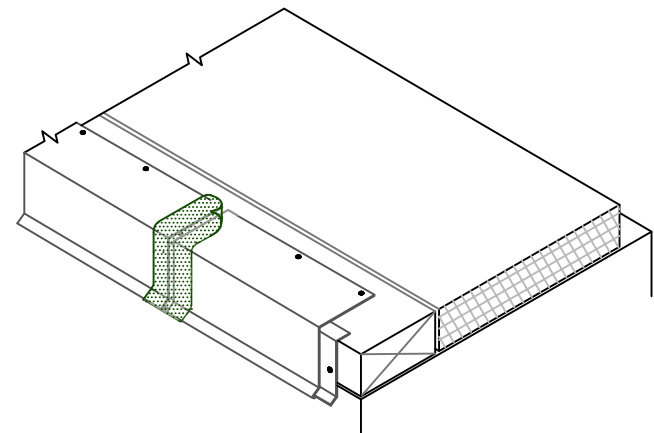


1



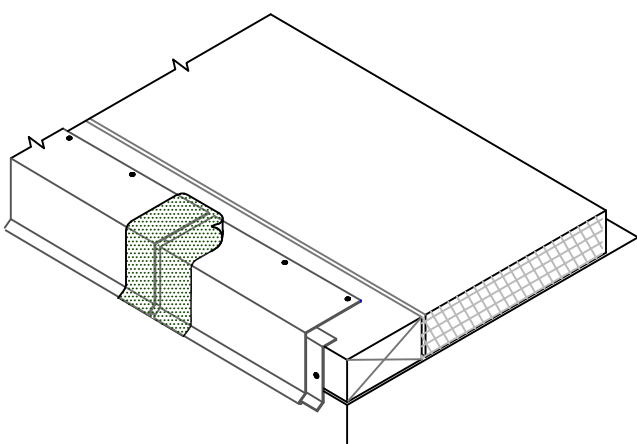
INSTALL CONTINUOUS CLEAT AND COATED METAL WITH 1/8"–1/4" (0.5cm–1cm) JOINTS BETWEEN ADJOINING SECTIONS.

2



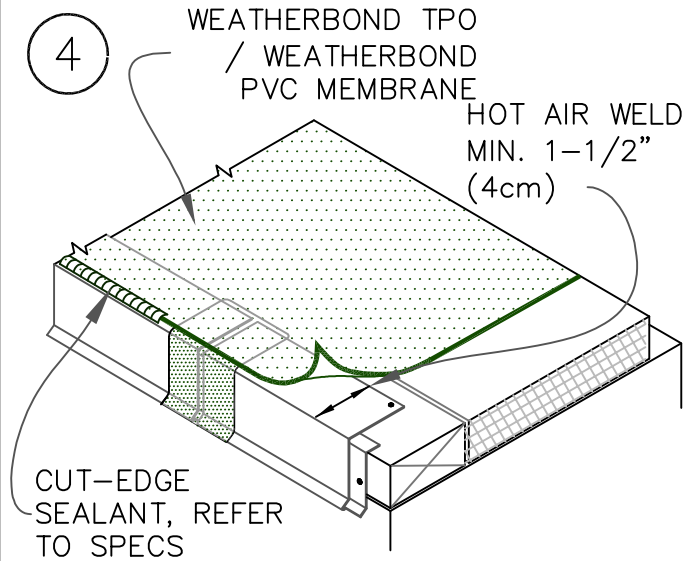
HEAT WELD 3" (7.5cm) WIDE PIECE OF NON-REINFORCED THERMOPLASTIC MEMBRANE OVER JOINT.

3



HEAT WELD 6" (15cm) WIDE PIECE OF NON-REINFORCED MEMBRANE OVER THE JOINT.





4



POSITION FIELD MEMBRANE AND HEAT WELD TO COATED METAL A MINIMUM OF 1-1/2" (4cm) AS SHOWN.



EAVE/RAKE EDGE
(COATED METAL FASCIA)
(PAGE 2 OF 2)

-  HIGH DENSITY RECOVER BOARD
-  IN-FILL INSULATION
-   SEE NOTE(S)

METAL RETROFIT
MR | T1.1B