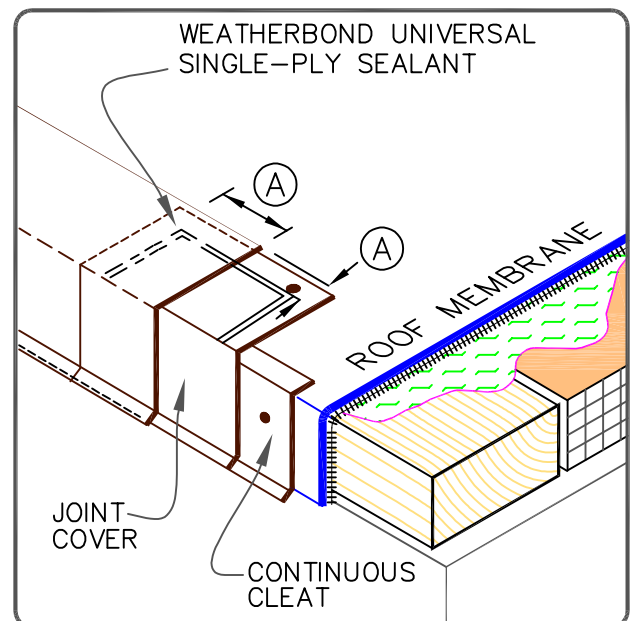


DIMENSIONS		cm	
(A)	1/2"	1.5	TO
	1"	2.5	
(B)	2"	5	MIN.

NOTES:

1. WOOD NAILER MUST EXTEND PAST TOTAL WIDTH OF METAL FASCIA DECK FLANGE.
2. METAL FASCIA DECK FLANGE MUST BE TOTALLY COVERED BY PEEL & STICK COVER STRIP WITH MINIMUM 2" (5cm) COVERAGE PAST NAIL HEADS.
3. TO REMOVE FINISHING OILS, SCRUB METAL FLANGE WITH WEATHERED MEMBRANE CLEANER; ALLOW TO DRY PRIOR TO APPLYING PRIMER.
4. APPLY APPLICABLE THERMOPLASTIC PRIMER TO METAL FLANGE AND MEMBRANE SURFACE PRIOR TO INSTALLING PEEL & STICK FLASHING.
5. WHEN METAL FASCIA BY OTHERS IS USED, FASTENER TYPE AND FASTENING FREQUENCY SHALL BE RECOMMENDED BY METAL EDGE MANUFACTURER.



WEATHERBOND DRIP EDGE FASCIA

- WEATHERBOND FLEECE MEMBRANE
- FLEXIBLE DASH
- APPROVED SUBSTRATE
- SEE NOTE(S)

THERMOPLASTIC WEATHERBOND FLEECE ADHERED

WBF-1.1