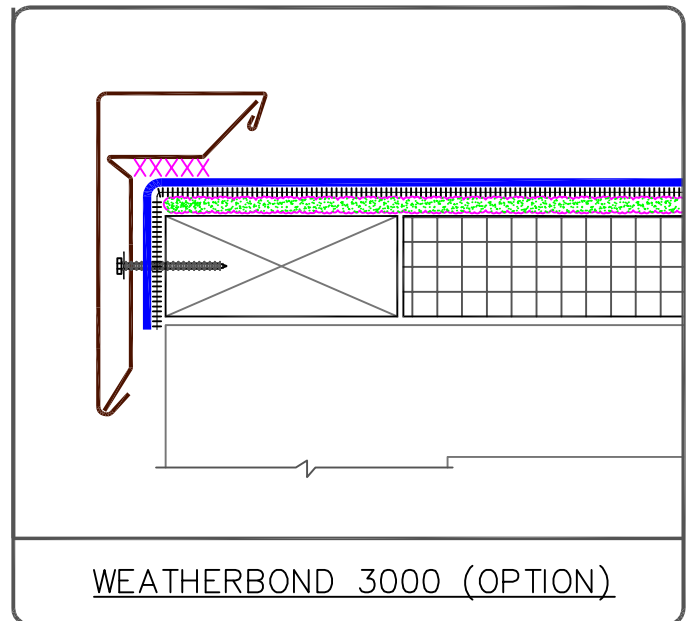


WEATHERBOND 2000

NOTES:

1. REFER TO [WEATHERBOND 2000 OR 3000 INSTRUCTION MANUALS](#) FOR THE STEP BY STEP INSTALLATION PROCEDURES.
2. IF INCIDENTAL/TEMPORARY PONDED WATER IS EXPECTED, THE WEATHERBOND MUST BE ELEVATED AND SCUPPERS PROVIDED FOR DRAINAGE.
3. ENSURE ROOF SLOPES AWAY FROM WEATHERBOND.



WEATHERBOND 3000 (OPTION)



WEATHERBOND 2000 & 3000

	→ WEATHERBOND FLEECE MEMBRANE
	→ FLEXIBLE DASH
	→ APPROVED SUBSTRATE
	→ SEE NOTE(S)

THERMOPLASTIC WEATHERBOND FLEECE ADHERED

WBF - 1.6