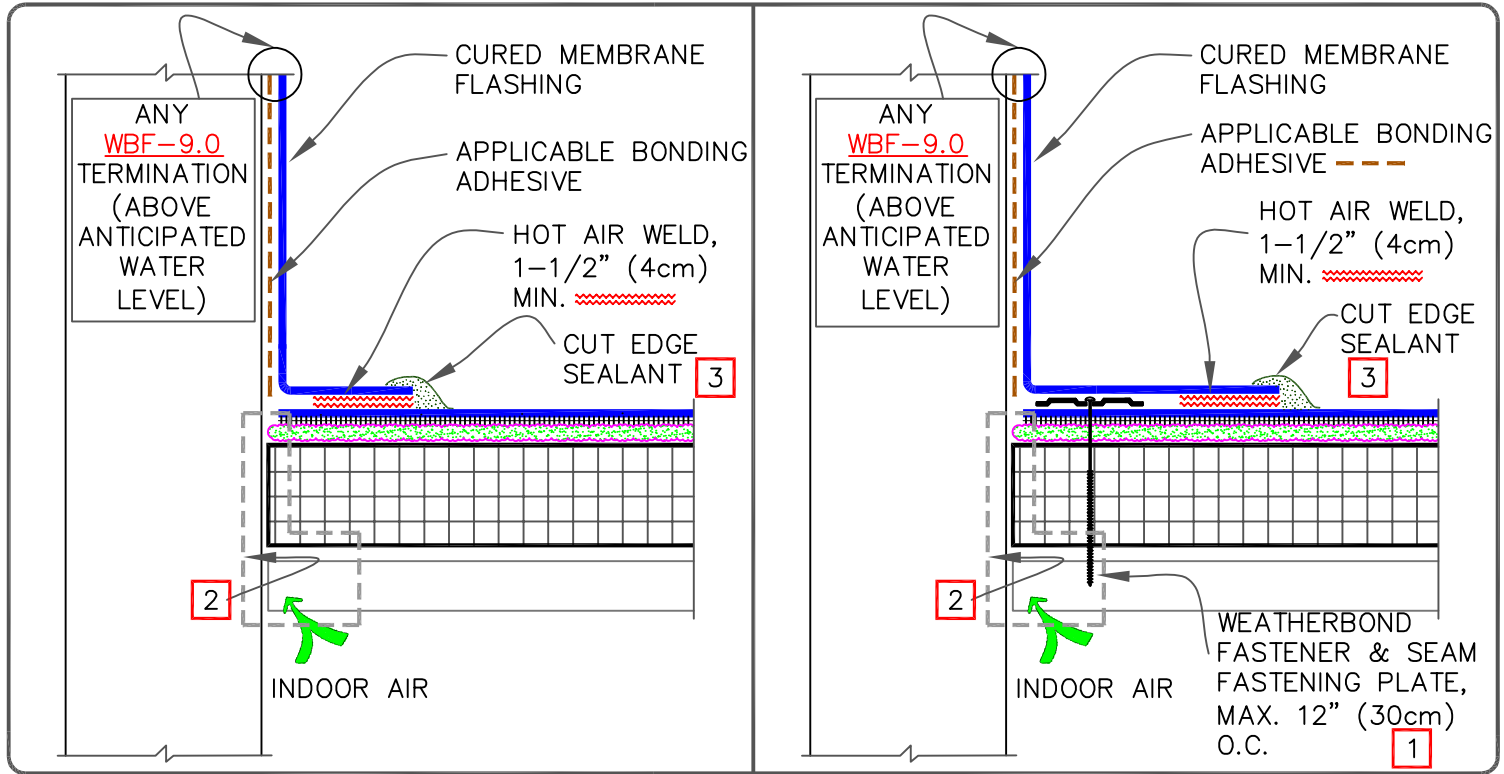


CAUTION

REFER TO [DETAIL WBF-12.3](#) WHEN USING AQUA BASE 120 ADHESIVE.



NOTES:

1. MECHANICALLY ATTACHED BASE SECUREMENT IS REQUIRED WHEN ANY ONE OF THE FOLLOWING MAY OCCUR:
 - 1.1. PROJECTS WITH CONTROL OR EXPANSION JOINTS OR ANTICIPATED BUILDING MOVEMENT.
 - 1.2. WHEN WEATHERBOND FLEECE MEMBRANE IS INSTALLED DIRECTLY OVER AN EXISTING SINGLE-PLY ROOF.
2. REFER TO SPECIAL CONDITION [SPEC. SUPPLEMENTS G-01-11 OR G-08-11](#):
 - 2.1. TO BLOCK INDOOR AIR INFILTRATION AND HUMIDITY AT THE JUNCTION ([G-01-11](#)).
 - 2.2. WHERE ROOF SYSTEM IS DESIGNED WITH A VAPOR RETARDER ([G-08-11](#)).
3. APPROXIMATELY 1/8" (0.5cm) DIAMETER BEAD OF CUT-EDGE SEALANT IS REQUIRED ON CUT EDGES OF REINFORCED TPO MEMBRANE.
4. WHEN USING 60 OR 80-MIL REINFORCED THERMOPLASTIC MEMBRANE, APPLY A 4-1/2" (11cm) DIAMETER THERMOPLASTIC "T-JOINT" COVER AT ALL FIELD SPLICE INTERSECTIONS.



PARAPET/CURB WITH WEATHERBOND'S DASH DC ADHESIVE - FULL COVERAGE

	→ WEATHERBOND FLEECE MEMBRANE
	→ FLEXIBLE DASH
	→ APPROVED SUBSTRATE
	→ SEE NOTE(S)

THERMOPLASTIC WEATHERBOND FLEECE ADHERED

WBF-12.1