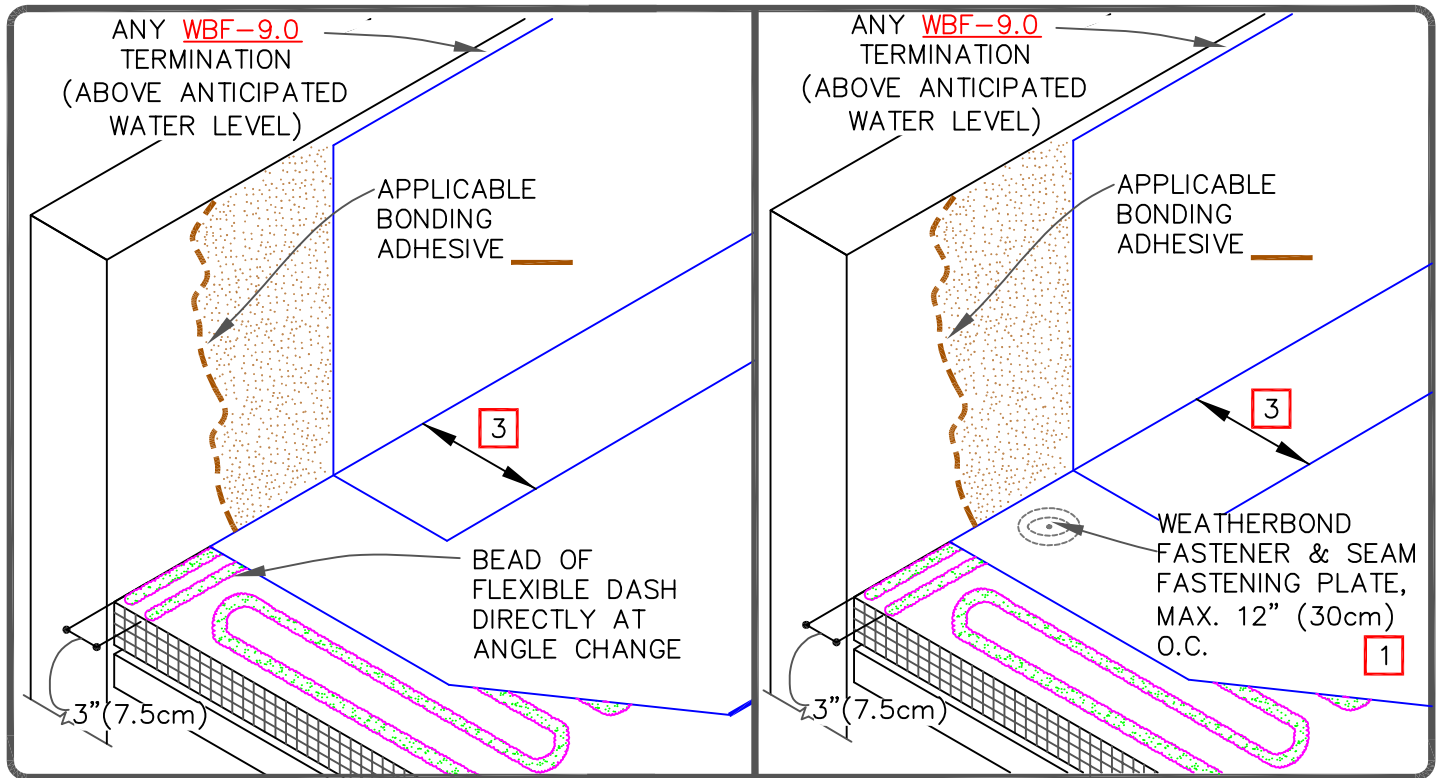


CAUTION

- REFER TO [DETAIL WBF-12.3](#) WHEN USING AQUA BASE 120 ADHESIVE OR HYDROBOND.

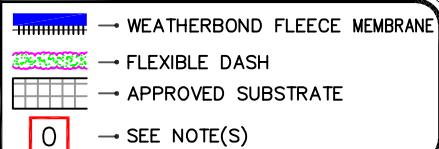


NOTES:

- MECHANICALLY FASTENED BASE SECUREMENT IS REQUIRED WHEN ANY ONE OF THE FOLLOWING MAY OCCUR:
 - PROJECTS WITH CONTROL OR EXPANSION JOINTS OR ANTICIPATED BUILDING MOVEMENT.
 - WHEN WEATHERBOND FLEECE MEMBRANE IS INSTALLED DIRECTLY OVER AN EXISTING SINGLE-PLY ROOF.
- REFER TO SPECIAL CONDITION [SPEC. SUPPLEMENTS G-01-11 OR G-08-11](#):
 - TO BLOCK INDOOR AIR INFILTRATION AND HUMIDITY AT THE JUNCTION ([G-01-11](#)).
 - WHERE ROOF SYSTEM IS DESIGNED WITH A VAPOR RETARDER ([G-08-11](#)).
- SPLICES SHALL BE COMPLETED USING MINIMUM 1-1/2" (4cm) HOT AIR WELD.
- APPROXIMATELY 1/8" (0.5cm) DIAMETER BEAD OF CUT-EDGE SEALANT IS REQUIRED ON CUT EDGES OF REINFORCED TPO MEMBRANE.
- WHEN USING 60 OR 80-MIL REINFORCED THERMOPLASTIC MEMBRANE FLASHING, APPLY A 4-1/2" (11cm) DIAMETER THERMOPLASTIC "T-JOINT" COVER AT ALL FIELD SPLICE INTERSECTIONS.



PARAPET/CURB WITH
SEPARATE MEMBRANE
- BEAD APPLIED



THERMOPLASTIC
WEATHERBOND
FLEECE ADHERED

WBF-12.1A