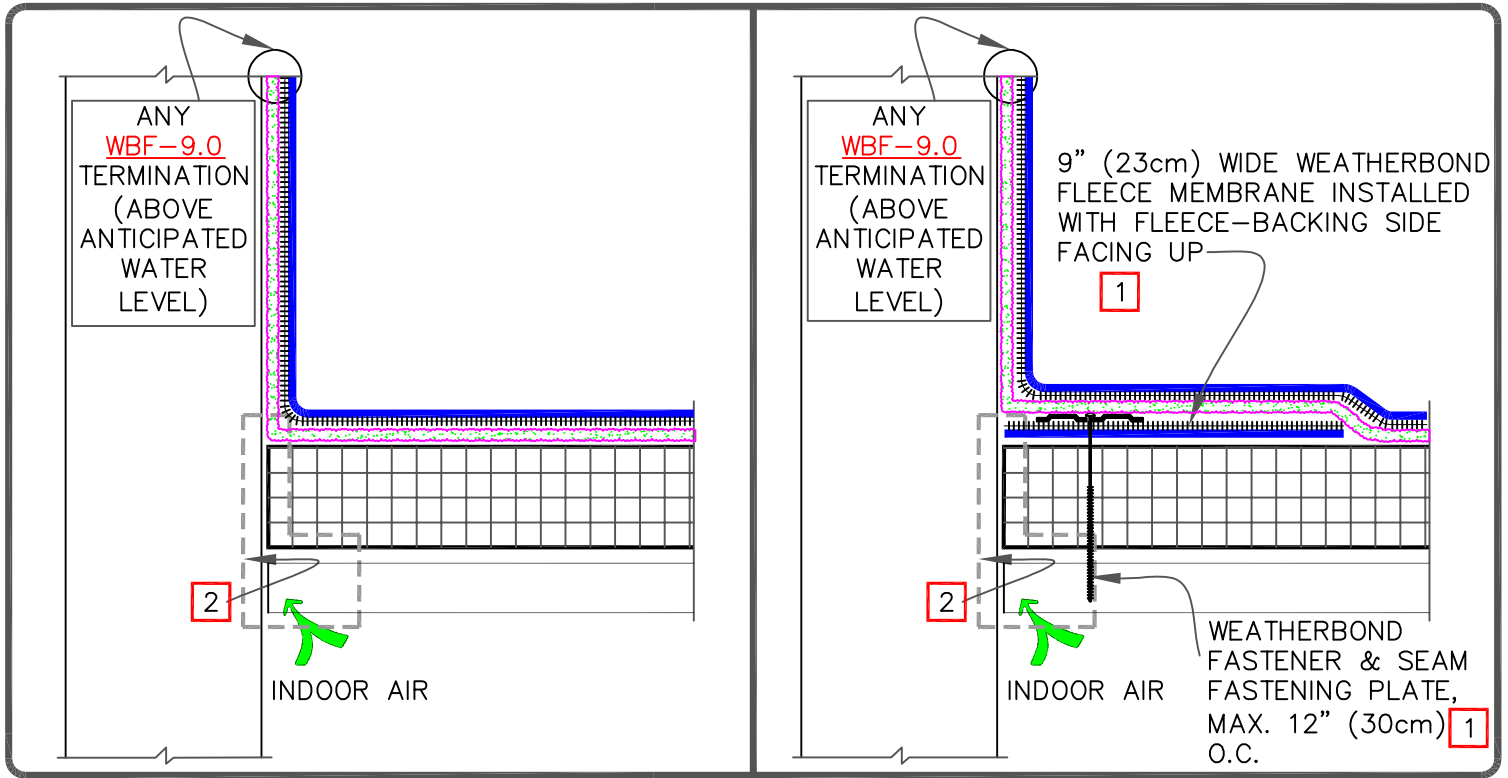


CAUTION

REFER TO [DETAIL WBF-12C](#) WHEN USING AQUA BASE 120 ADHESIVE OR HYDROBOND.

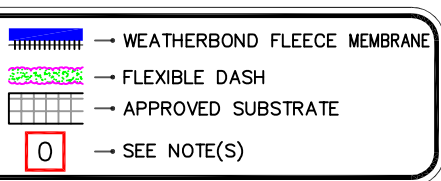


NOTES:

1. MECHANICALLY FASTENED BASE SECUREMENT IS REQUIRED WHEN ANY ONE OF THE FOLLOWING MAY OCCUR:
  - 1.1. PROJECTS WITH CONTROL OR EXPANSION JOINTS OR ANTICIPATED BUILDING MOVEMENT.
  - 1.2. WHEN WEATHERBOND FLEECE MEMBRANE IS INSTALLED DIRECTLY OVER AN EXISTING SINGLE-PLY ROOF.
2. REFER TO SPECIAL CONDITION [SPEC. SUPPLEMENTS G-01-11 OR G-08-11](#):
  - 2.1. TO BLOCK INDOOR AIR INFILTRATION AND HUMIDITY AT THE JUNCTION ([G-01-11](#)).
  - 2.2. WHERE ROOF SYSTEM IS DESIGNED WITH A VAPOR RETARDER ([G-08-11](#)).
3. WHEN THE USE OF FLEXIBLE DASH (FULL SPRAY) IS NOT FEASIBLE ON THE VERTICAL SUBSTRATE, SEE APPROPRIATE TDB FOR INSTALLATION INSTRUCTIONS FOR BONDING ADHESIVE.



PARAPET/CURB WITH CONTINUOUS MEMBRANE – FULL COVERAGE



THERMOPLASTIC WEATHERBOND FLEECE ADHERED  
WBF-12.2