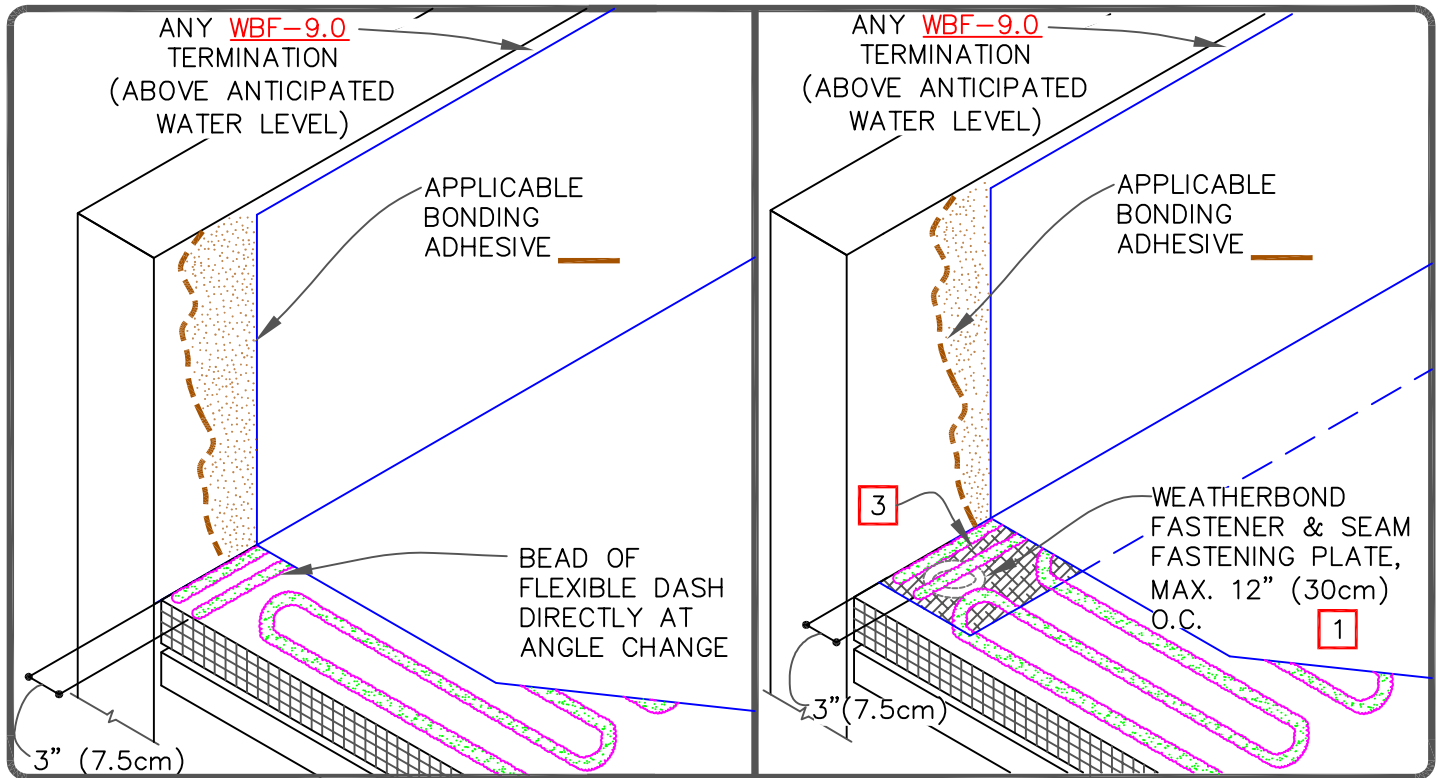


CAUTION

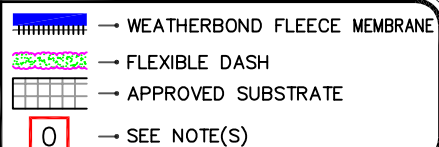
REFER TO [DETAIL WBF-12.3](#) WHEN USING AQUA BASE 120 ADHESIVE OR HYDROBOND.

## NOTES:

1. MECHANICALLY FASTENED BASE SECUREMENT IS REQUIRED WHEN ANY ONE OF THE FOLLOWING MAY OCCUR:
  - 1.1. PROJECTS WITH CONTROL OR EXPANSION JOINTS OR ANTICIPATED BUILDING MOVEMENT.
  - 1.2. WHEN WEATHERBOND FLEECE MEMBRANE IS INSTALLED DIRECTLY OVER AN EXISTING SINGLE-PLY ROOF.
2. REFER TO SPECIAL CONDITION [SPEC. SUPPLEMENTS G-01-11 OR G-08-11](#):
  - 2.1. TO BLOCK INDOOR AIR INFILTRATION AND HUMIDITY AT THE JUNCTION ([G-01-11](#)).
  - 2.2. WHERE ROOF SYSTEM IS DESIGNED WITH A VAPOR RETARDER ([G-08-11](#)).
3. 9" (23cm) WIDE WEATHERBOND FLEECE MEMBRANE INSTALLED WITH FLEECE-BACKING SIDE FACING UP.
4. WHEN USING 60 OR 80-MIL REINFORCED THERMOPLASTIC MEMBRANE FLASHING, APPLY A 4-1/2" (11cm) DIAMETER THERMOPLASTIC "T-JOINT" COVER AT ALL FIELD SPLICE INTERSECTIONS.



PARAPET/CURB WITH  
CONTINUOUS MEMBRANE  
- BEAD APPLIED



THERMOPLASTIC  
WEATHERBOND  
FLEECE ADHERED

WBF-12.2A