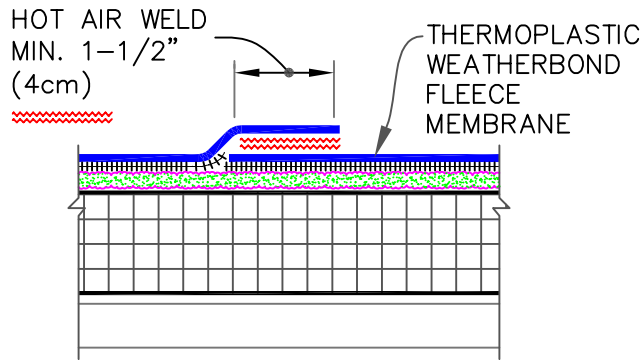
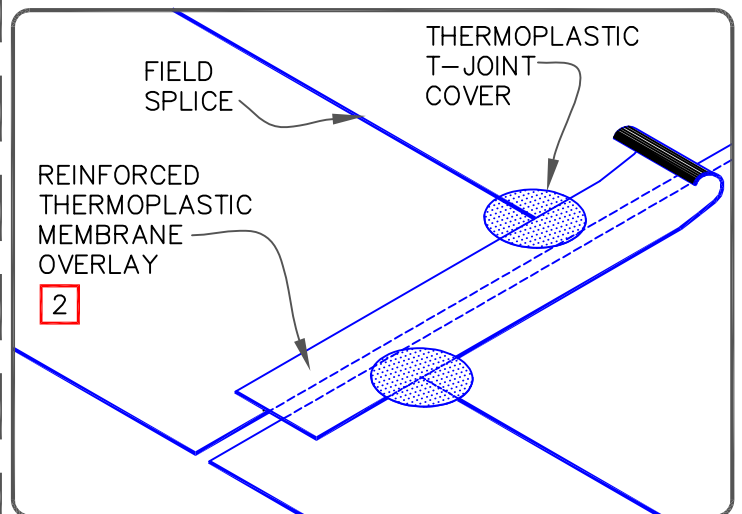
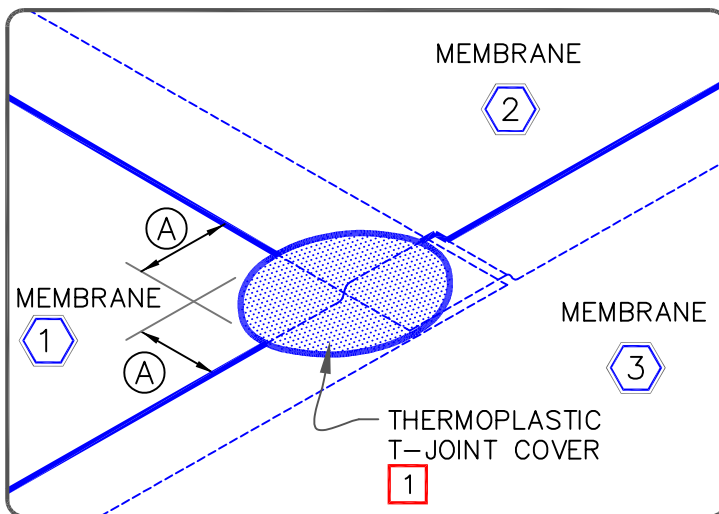
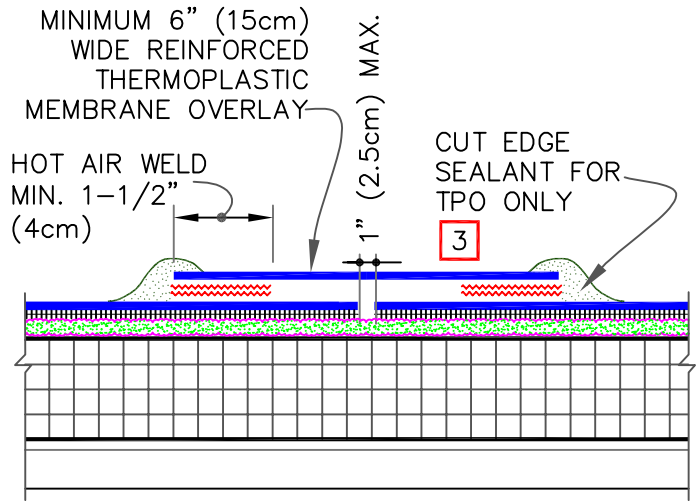


MEMBRANE SPLICE



| DIMENSION | cm |
|------------|----|
| (A) 2-1/4" | 6 |

END LAP SPLICE



NOTES:

1. WHEN USING 115 OR 135-MIL TPO WEATHERBOND FLEECE OR 115 OR 135 PVC WEATHERBOND FLEECE MEMBRANE, APPLY A 4-1/2" (11cm) DIAMETER THERMOPLASTIC "T-JOINT" COVER AT ALL FIELD SPLICE INTERSECTIONS.
2. WHEN USING 60 OR 80 MIL THERMOPLASTIC REINFORCED MEMBRANE OVERLAY, INTERSECTIONS BETWEEN SPLICES MUST BE OVERLAID WITH A 4-1/2" (11cm) DIAMETER THERMOPLASTIC "T-JOINT" COVER.
3. APPROXIMATELY 1/8" (0.5cm) DIAMETER BEAD OF CUT-EDGE SEALANT IS REQUIRED ON CUT EDGES OF REINFORCED TPO MEMBRANE.



THERMOPLASTIC MEMBRANE SPLICES

THERMOPLASTIC WEATHERBOND FLEECE ADHERED
WBF-2.2