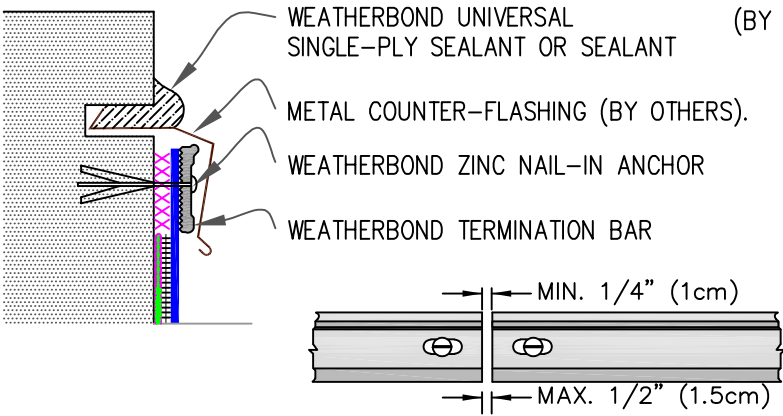


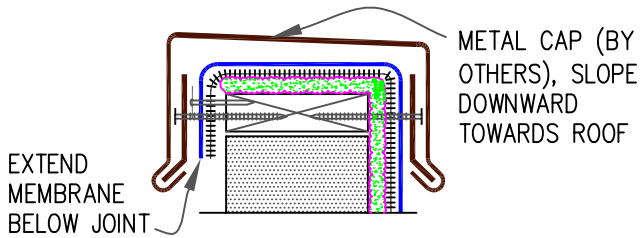
9.1 MECHANICAL TERMINATION WITH COUNTER FLASHING



NOTES:

1. APPLY ON HARD SMOOTH SURFACE ONLY; NOT FOR USE ON EXPOSED WOOD.
2. DO NOT WRAP COMPRESSION TERMINATION BAR AROUND CORNERS.
3. FLEECE-BACKING MUST BE REMOVED FROM THE MEMBRANE SO THAT WATER CUT-OFF MASTIC IS IN DIRECT CONTACT.
4. DETAIL 9.5 MUST BE USED AT VERTICAL JOINTS IN PANEL WALLS.

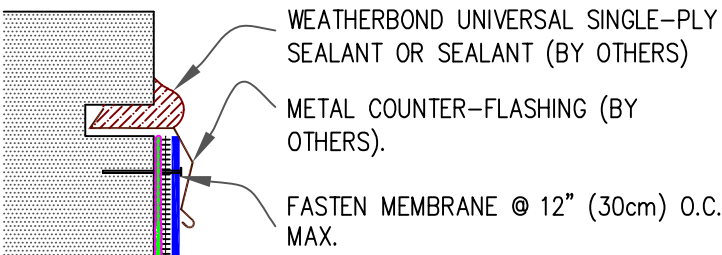
9.2 SHEET METAL COPING



NOTES:

1. FOR WEATHERBOND COPING, REFER TO INSTALLATION INSTRUCTIONS PUBLISHED SEPARATELY.
2. MEMBRANE MUST BE EXTENDED TO CORNERS TO PROVIDE COMPLETE COVERAGE OF THE TOP WALL SURFACE.

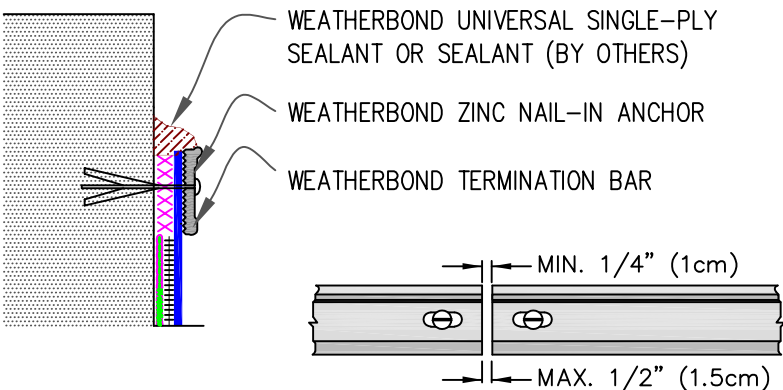
9.3 COUNTER FLASHING TERMINATION



NOTE:

1. WHEN MECHANICAL FASTENERS ARE USED TO PENETRATE THE METAL COUNTER-FLASHING, USE EPDM WASHERS, APPLY WATER CUT-OFF MASTIC UNDER THE COUNTER-FLASHING OR CAULK THE FASTENER HEADS.

9.4 MECHANICAL TERMINATION



NOTES:

1. APPLY ON HARD SMOOTH SURFACE ONLY; NOT FOR USE ON EXPOSED WOOD.
2. DO NOT WRAP COMPRESSION TERMINATION BAR AROUND CORNERS.
3. FLEECE-BACKING MUST BE REMOVED FROM THE MEMBRANE SO THAT WATER CUT-OFF MASTIC IS IN DIRECT CONTACT.
4. DETAIL 9.5 MUST BE USED AT VERTICAL JOINTS IN PANEL WALLS.

XXXXXXX

WEATHERBOND WATER CUT-OFF MASTIC MUST BE UNDER COMPRESSION