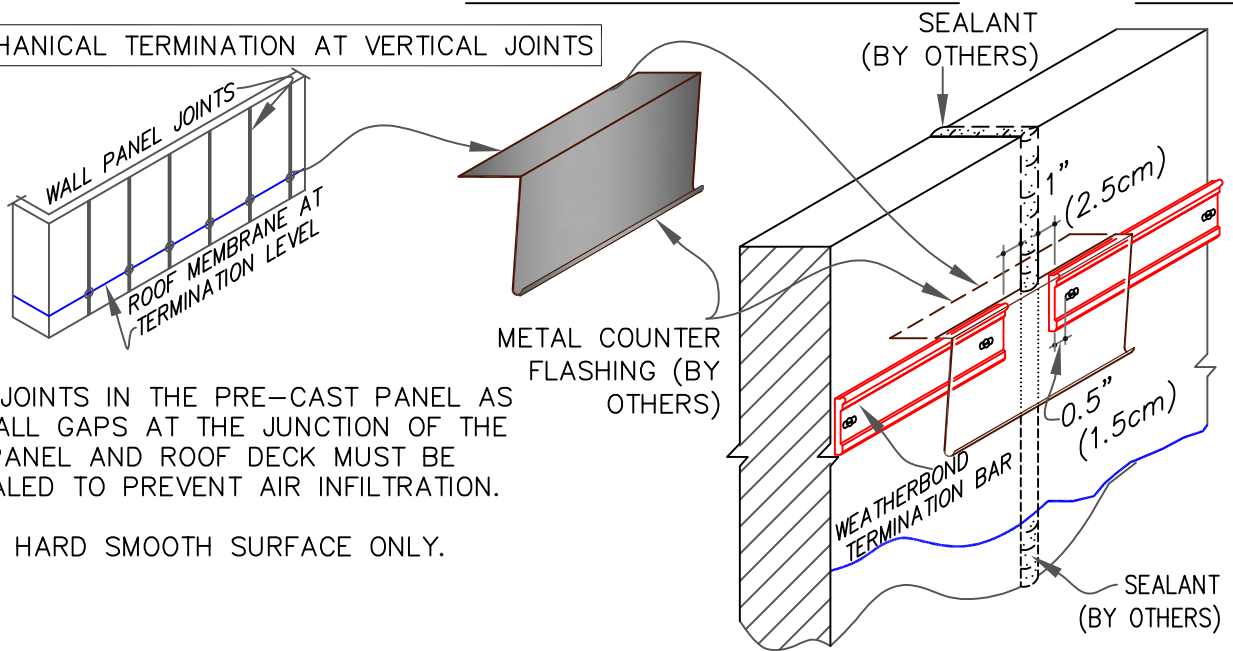


9.5 MECHANICAL TERMINATION AT VERTICAL JOINTS

NOTES:

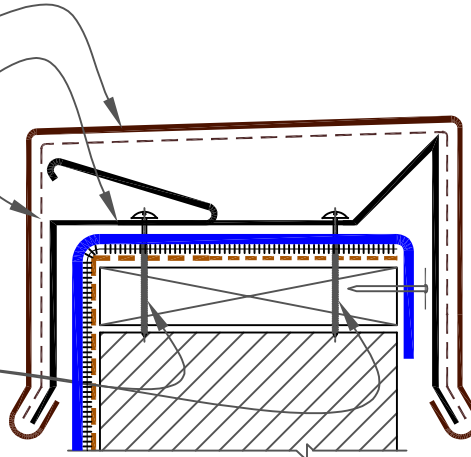
1. VERTICAL JOINTS IN THE PRE-CAST PANEL AS WELL AS ALL GAPS AT THE JUNCTION OF THE TILT-UP PANEL AND ROOF DECK MUST BE FULLY SEALED TO PREVENT AIR INFILTRATION.
2. APPLY ON HARD SMOOTH SURFACE ONLY.



9.6 WEATHERBOND COPING

WEATHERBOND 200 & 300

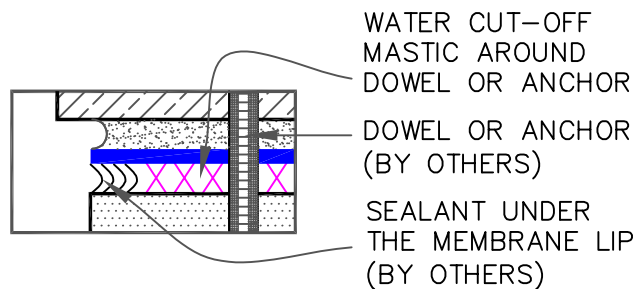
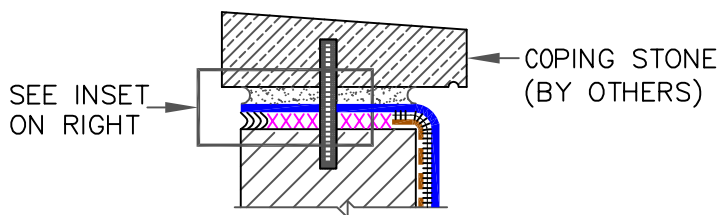
- COPING
- 20 GA. GALVANIZED ANCHOR CLIPS @ 6 FEET (183cm) O.C.
- CONCEALED SPLICE PLATE AT EACH JOINT OF COPING
- HEX-HEAD FASTENERS



NOTES:

1. MEMBRANE MUST BE EXTENDED AT CORNERS TO PROVIDE COMPLETE COVERAGE OF THE TOP WALL SURFACE. REFER TO [DETAIL WBF-9.2](#).
2. REFER TO [WEATHERBOND COPING INSTALLATION INSTRUCTION](#) MANUAL FOR STEP-BY-STEP INSTRUCTION PROCEDURES.

9.7 COPING STONE TERMINATION



XXXXXXXX

WEATHERBOND WATER CUT-OFF MASTIC MUST BE UNDER COMPRESSION



MEMBRANE TERMINATIONS (PAGE 2 OF 2)

- WEATHERBOND FLEECE MEMBRANE
- FLEXIBLE DASH
- APPROVED SUBSTRATE
- SEE NOTE(S)

THERMOPLASTIC WEATHERBOND FLEECE ADHERED

WBF-9.0