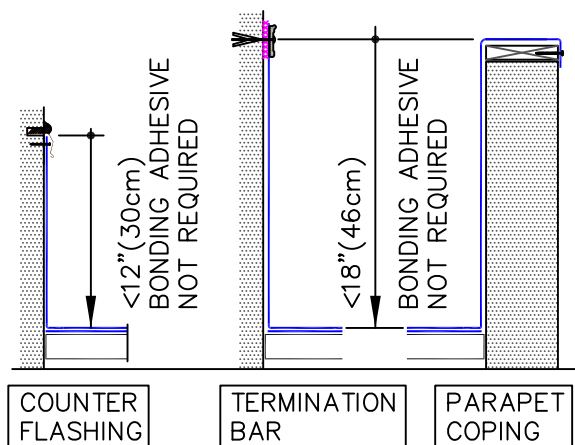


TABLE: FASTENER TYPES ON MECHANICALLY FASTENED ROOF ASSEMBLY

DECK TYPE	FASTENERS	PLATES
STEEL, WOOD	HPWX	HPWX
CONCRETE	APPROVED CONCRETE FASTENER	

NOTES:

1. REFER TO SPECIAL CONDITION [SPEC. SUPPLEMENTS G-08-18](#):
  - 1.1. WHERE ROOF SYSTEM IS DESIGNED WITH A VAPOR RETARDER ([G-08-18](#)).
2. FOR INSIDE CORNER AND RPS APPLICATION SEE [WBPC-12.2B](#).
3. IN A CASE WHERE FASTENERS MUST BE FASTENED INTO THE VERTICAL SURFACE, CARE MUST BE TAKEN TO CREASE THE RPS AS WELL AS THE MEMBRANE TIGHTLY INTO THE ANGLE CHANGE TO MAXIMIZE CONTACT BETWEEN THE TAPE AND MEMBRANE. MEMBRANE MUST BE ADHERED TO THE FULL WIDTH OF THE TAPE. PLACING THE PLATES TIGHT INTO THE ANGLE CHANGE WILL HELP HOLD THE RPS IN THE PROPER POSITION.



PARAPET FLASHING WITH PEEL & STICK RPS, PAGE 1 OF 2

- TPO MEMBRANE
- APPROVED SUBSTRATE
- SEE NOTE

THERMOPLASTIC ROOFING SYSTEM  
WBPC-12.2A