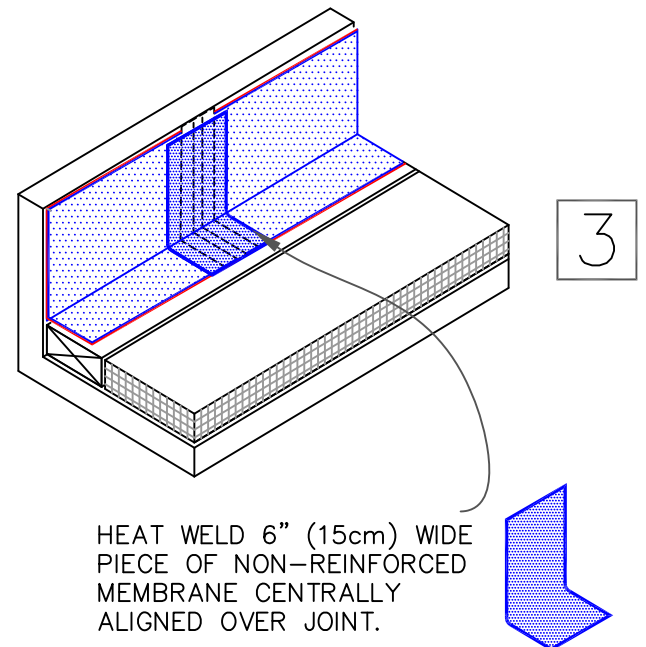
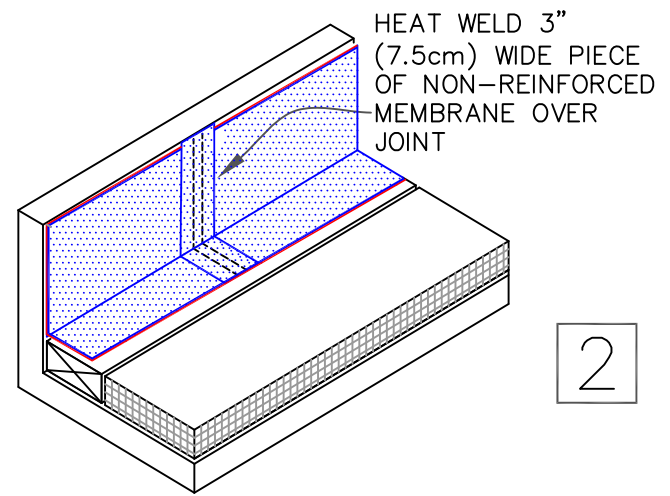
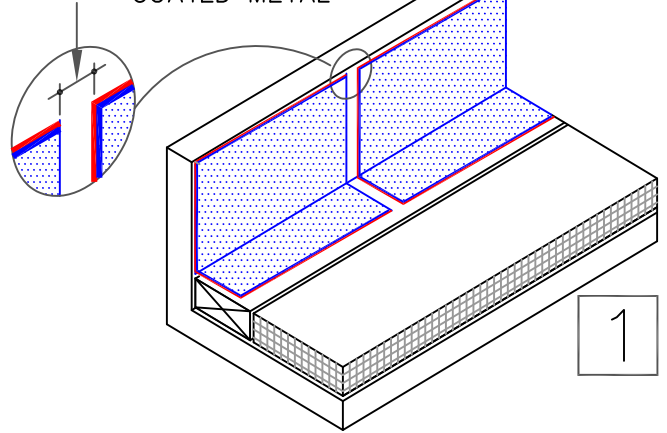


ALLOW 1/4" (1cm) GAP IN WEATHERBOND COATED METAL



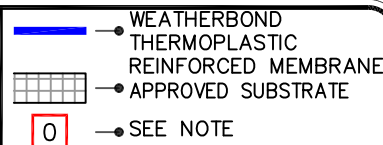
NOTES:

1. APPROXIMATELY 1/8" (0.5cm) DIAMETER BEAD OF CUT-EDGE SEALANT IS REQUIRED ON CUT EDGES OF WEATHERBOND REINFORCED TPO MEMBRANE.
2. REFER TO SPECIAL CONDITION [SPEC. SUPPLEMENTS G-08-18](#):
 - 2.1. WHERE ROOF SYSTEM IS DESIGNED WITH A VAPOR RETARDER ([G-08-18](#)).
3. PLACE A LAYER OF WEATHERBOND THERMOPLASTIC MEMBRANE UNDER THE METAL CAP TO PROTECT AGAINST MOISTURE INFILTRATION AT JOINTS.
4. FASTEN COATED METAL FLASHING TO WOOD NAILERS USING 1-1/2" (4cm) MIN. RING SHANK NAILS SPACED 6" (15cm) ON CENTER AND STAGGERED APPROX. 1/2" (1.5cm).

HEAT WELD 6" (15cm) WIDE PIECE OF NON-REINFORCED MEMBRANE CENTRALLY ALIGNED OVER JOINT.



COATED METAL WALL FLASHING



THERMOPLASTIC ROOFING SYSTEM

WBPC-12.3