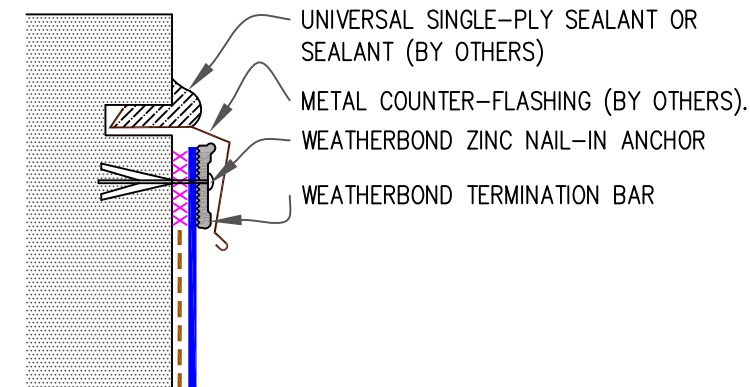
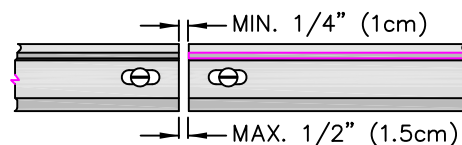


9.1 MECHANICAL TERMINATION WITH COUNTER FLASHING

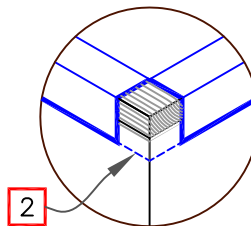
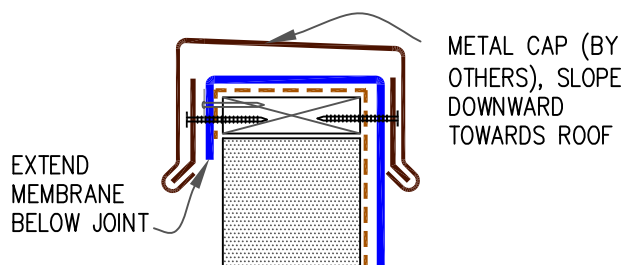


NOTES:

1. APPLY ON HARD SMOOTH SURFACE ONLY; NOT FOR USE ON EXPOSED WOOD.
2. DO NOT WRAP TERMINATION BAR AROUND CORNERS.
3. DETAIL 9.5 MUST BE USED AT VERTICAL WALL JOINTS IN PANEL WALLS.



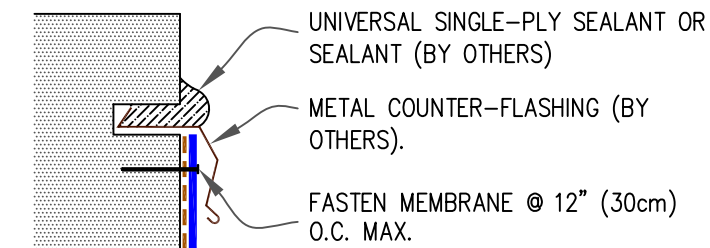
9.2 SHEET METAL COPING (BY OTHERS)



NOTES:

1. FOR WEATHERBOND COPING, REFER TO INSTALLATION INSTRUCTIONS PUBLISHED SEPARATELY.
2. MEMBRANE MUST BE EXTENDED TO CORNERS TO PROVIDE COMPLETE COVERAGE OF THE TOP WALL SURFACE.

9.3 COUNTER FLASHING TERMINATION



NOTE:

1. WHEN MECHANICAL FASTENERS ARE USED TO PENETRATE THE METAL COUNTER-FLASHING, USE EPDM WASHERS, APPLY WATER CUT-OFF MASTIC UNDER THE COUNTER-FLASHING OR CAULK THE FASTENER HEADS.

--- WEATHERBOND BONDING ADHESIVE

xxxxxxx WATER CUT-OFF MASTIC – MUST BE HELD UNDER CONSTANT COMPRESSION.



MEMBRANE TERMINATIONS,  
PAGE 1 OF 2

- WEATHERBOND THERMOPLASTIC REINFORCED MEMBRANE
- APPROVED SUBSTRATE
- SEE NOTE

THERMOPLASTIC ROOFING SYSTEM  
WBPC-9.0A