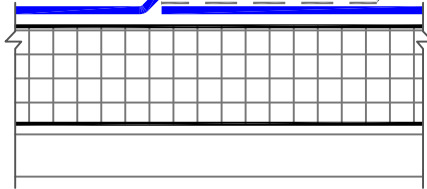


OPTION 1

3" (7.5cm) WIDE
PRE-APPLIED
TAPE IN CONJUNCTION
WITH EPDM PRIMER

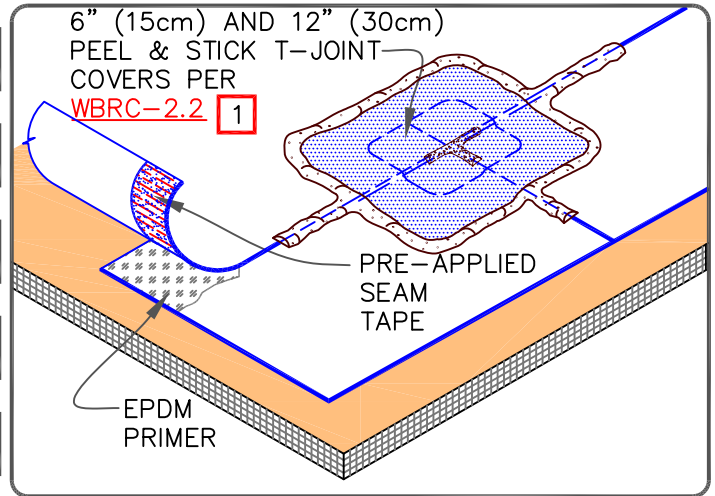
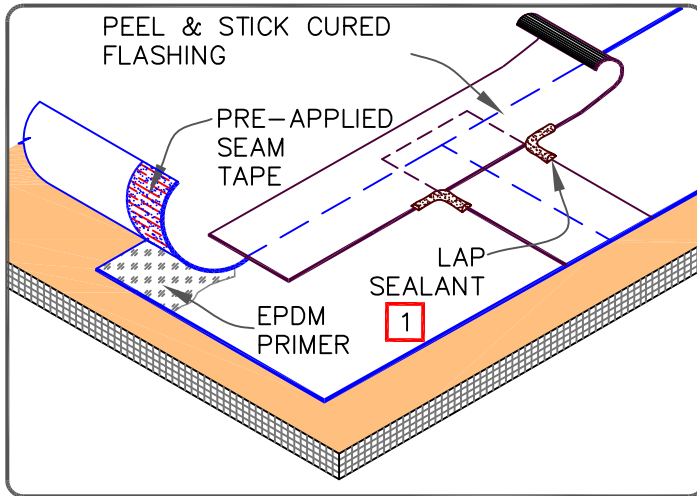
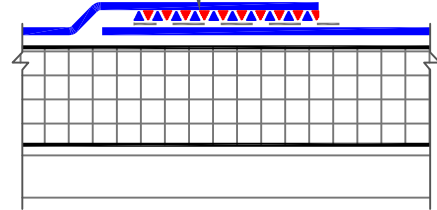
6" (15cm) WIDE PEEL
& STICK CURED
FLASHING

EPDM
PRIMER



OPTION 2

6" (15cm) WIDE
PRE-APPLIED
TAPE IN CONJUNCTION
WITH EPDM PRIMER



NOTES:

1. APPLY LAP SEALANT AT ALL INTERSECTIONS BETWEEN PEEL & STICK OVERLAYMENT STRIP.
2. REFER TO DETAIL [WBRMA-2.1](#) FOR MECHANICALLY-FASTENED SPLICES.

NOTE:

1. APPLY LAP SEALANT ALONG THE EXPOSED EDGE OF THE MEMBRANE SPLICE COVERING THE EXPOSED SPLICE TAPE 1/2" (1.5cm) IN EACH DIRECTION FROM THE SPLICE INTERSECTION AND OVERLAY WITH A 6" (15cm) T-JOINT COVER. INSTALL A 12" (30cm) T-JOINT COVER CENTERED OVER THE FIRST T-JOINT COVER PER DETAIL [WBRC-2.2](#).

PRE-APPLIED SEAM TAPE