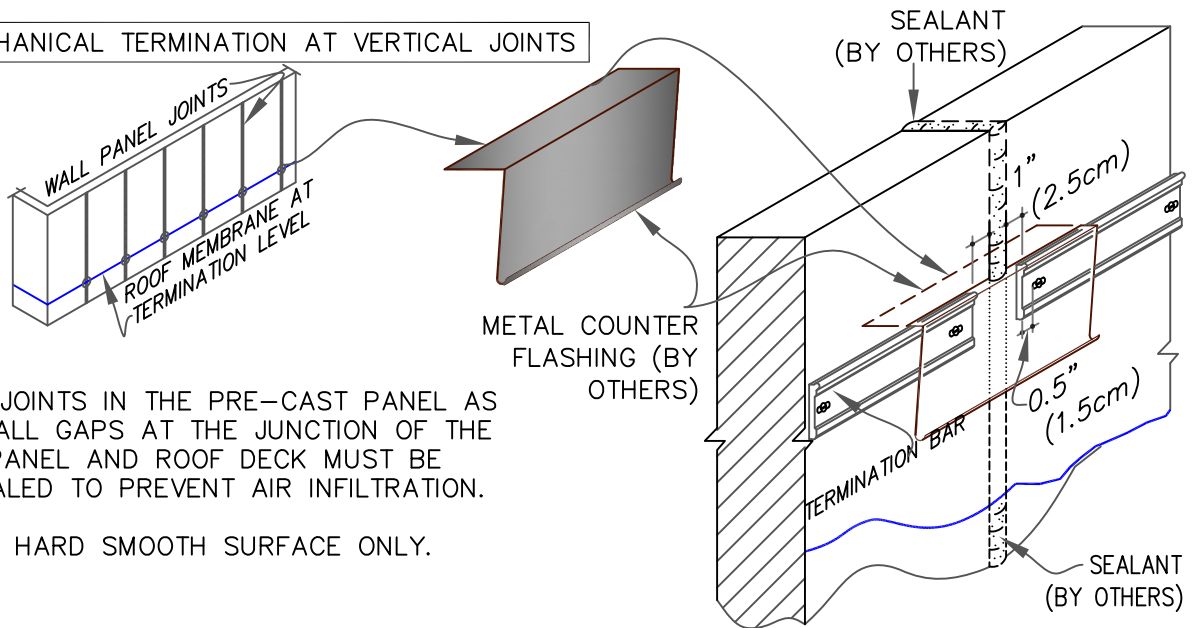


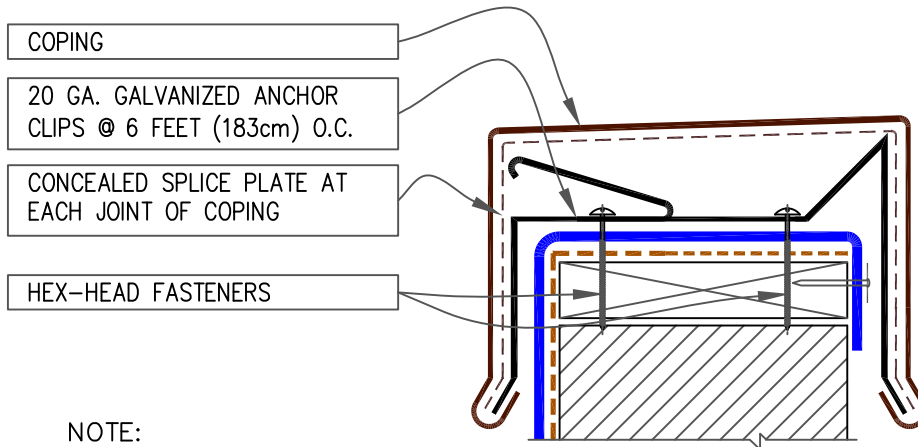
9.5 MECHANICAL TERMINATION AT VERTICAL JOINTS



NOTES:

1. VERTICAL JOINTS IN THE PRE-CAST PANEL AS WELL AS ALL GAPS AT THE JUNCTION OF THE TILT-UP PANEL AND ROOF DECK MUST BE FULLY SEALED TO PREVENT AIR INFILTRATION.
2. APPLY ON HARD SMOOTH SURFACE ONLY.

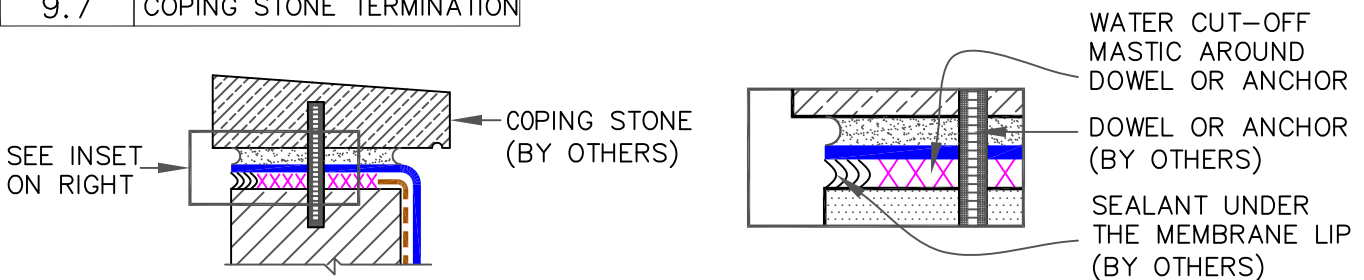
9.6 WEATHERBOND COPING



NOTE:

1. MEMBRANE MUST BE EXTENDED AT CORNERS TO PROVIDE COMPLETE COVERAGE OF THE TOP WALL SURFACE. REFER TO [DETAIL WBRC-9.0B](#).

9.7 COPING STONE TERMINATION



--- APPLICABLE BONDING ADHESIVE

xxx WATER CUT-OFF MASTIC- MUST BE HELD UNDER CONSTANT COMPRESSION.



MEMBRANE TERMINATIONS  
PAGE 2 OF 2

- EPDM MEMBRANE
- APPROVED SUBSTRATE
- SEE NOTE

EPDM ROOFING SYSTEM  
WBRC-9.0B