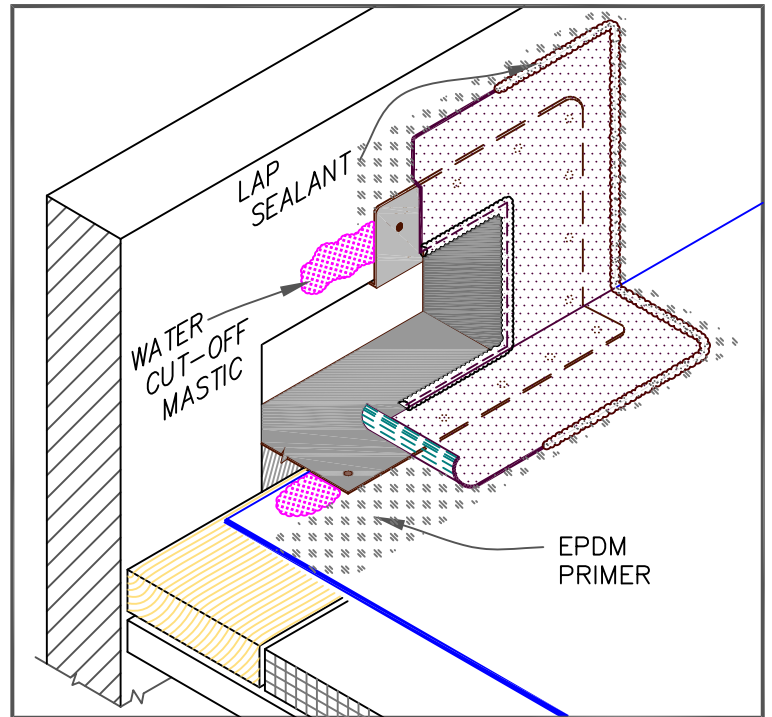


NOTES:

1. METAL SCUPPER BOX MUST HAVE CONTINUOUS FLANGES WITH ROUNDED CORNERS. SOLDER ALL SCUPPER SEAMS WATER-TIGHT.
2. WATER CUT-OFF MASTIC UNDER SCUPPER FLANGE MUST BE UNDER CONSTANT COMPRESSION.
3. CLEAN METAL FLANGE WITH WEATHERED MEMBRANE CLEANER; AND ALLOW TO DRY



METAL SCUPPER AT DECK

- ● EPDM MEMBRANE
- APPROVED SUBSTRATE
- 0 ● SEE NOTE

EPDM ROOFING SYSTEM
WBRC-18.1